

Executive Director's Report

Board of Directors Meeting

December 3, 2012



Programs

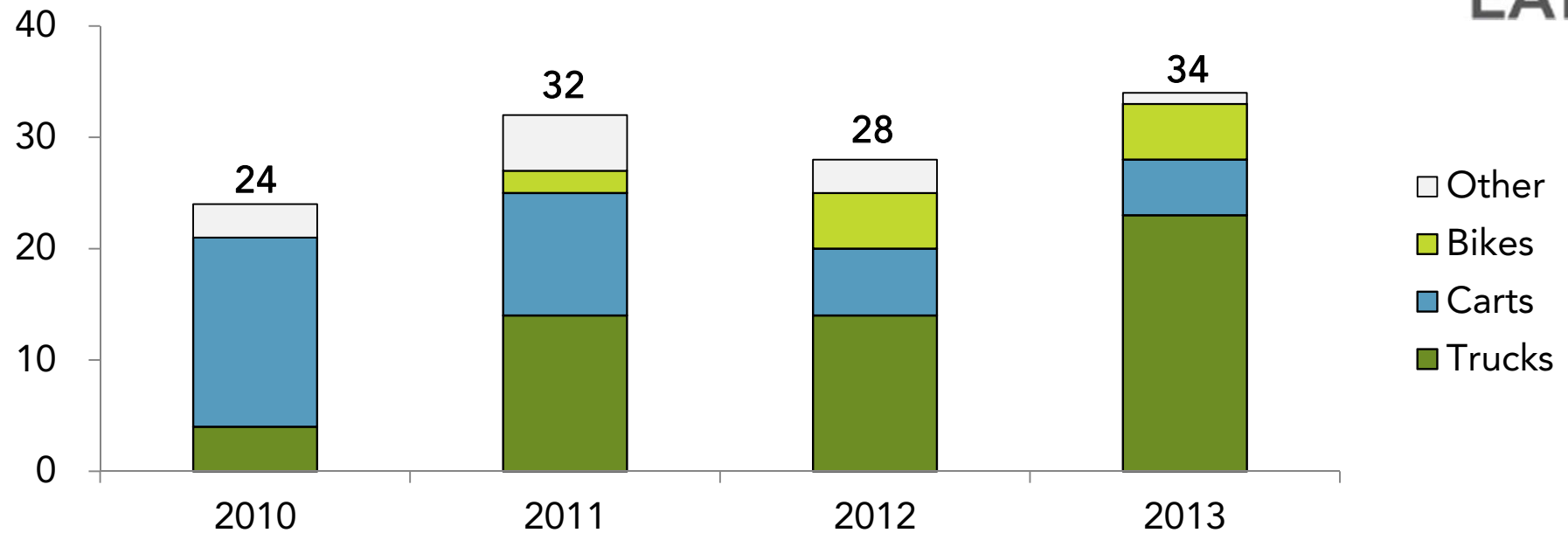
Boston Local Food Festival



Food Truck Throwdown



34 vendors under consideration for 2013 season



Take our annual survey about Greenway Programs!

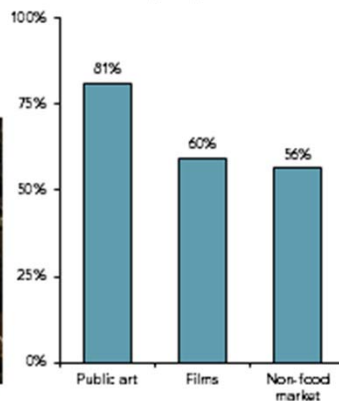
www.surveymonkey.com/s/NQRZPRC

Previous surveys have informed successful 2011 and 2012 seasons:

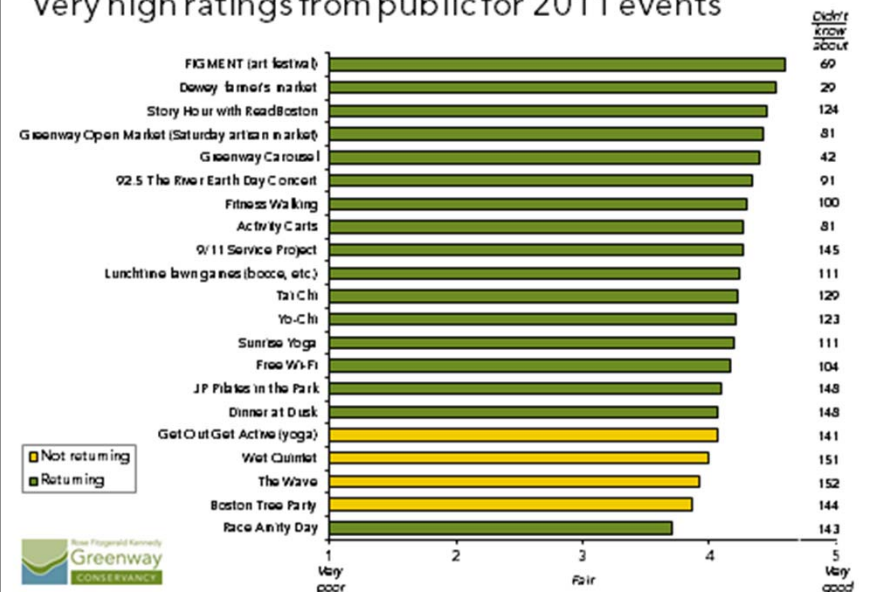
2010 survey informs 2011 program season

- **GLC forum and survey** highlighted desire for
 - Public art
 - Films
 - Non-food market
 - Signature multi-day events
 - Tours

What would you like to see added?
Top 3 responses



Very high ratings from public for 2011 events



Winter Lights – 2012/13

Lighwaves Opening

Wednesday, December 5, 6:00PM – 7:00PM

Boston Harbor Islands Pavilion

Two temporary art installations curated by Boston CyberArts.

Northern Lights

Tuesday, December 11, 6:00PM – 7:00PM

North End Parks

Annual lighting of the great Elm Tree and the illumination of the pergola.

Color Commons Opening

Thursday, January 10, 6:00PM – 7:00PM

Rings Fountain (between Milk St. & State St.)

An event and temporary art installation by New American Public Art designed for interaction with the Light Blades on the Greenway.

Urban Planning Opening

Thursday, March 7, 6:30-8:00PM

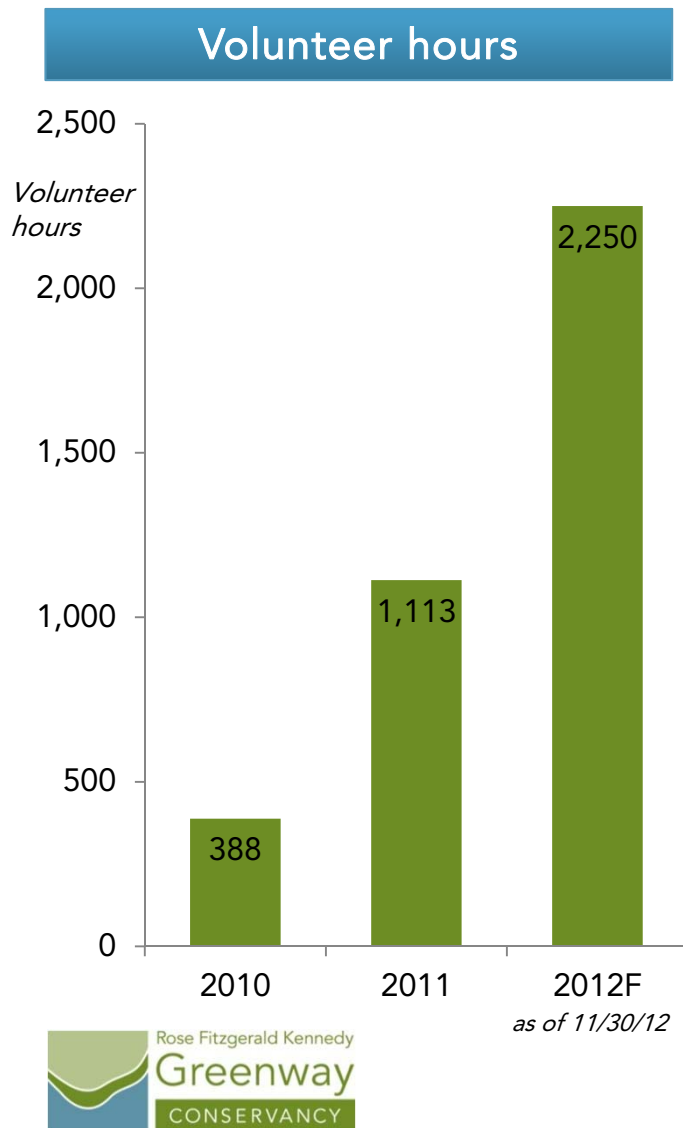
Dewey Square Park

Re-imagine the communities that existed in the 1940's and 50's prior to the Central Artery construction. Lumen Collective will re-trace the Greenway using LED rope lights.



Volunteers

Volunteer hours doubled in 2012



Volunteer partners

- BNY Mellon
 - Boston Cares
 - Boston University
 - Boston Private Bank
 - Breckinridge Capitol Advisors
 - Brightcove
 - Bunker Hill Community College
 - Communispace
 - Children's Advocacy Center
 - Eaton Vance
 - Edison Mission
 - Environmental Protection Agency
 - Federal Reserve
 - Friends of the North End Parks
 - Harvard University
 - Integrated Design Group
 - Liberty Mutual
 - Langham Hotel
 - LPL Financial
 - Mercer
 - Murtha Cullina
 - State Street
 - Suffolk Construction
 - Telamon Insurance & Financial
 - Valley Crest
 - Wellington Management
 - Whole Foods
 - Youth Build Boston
- and more...

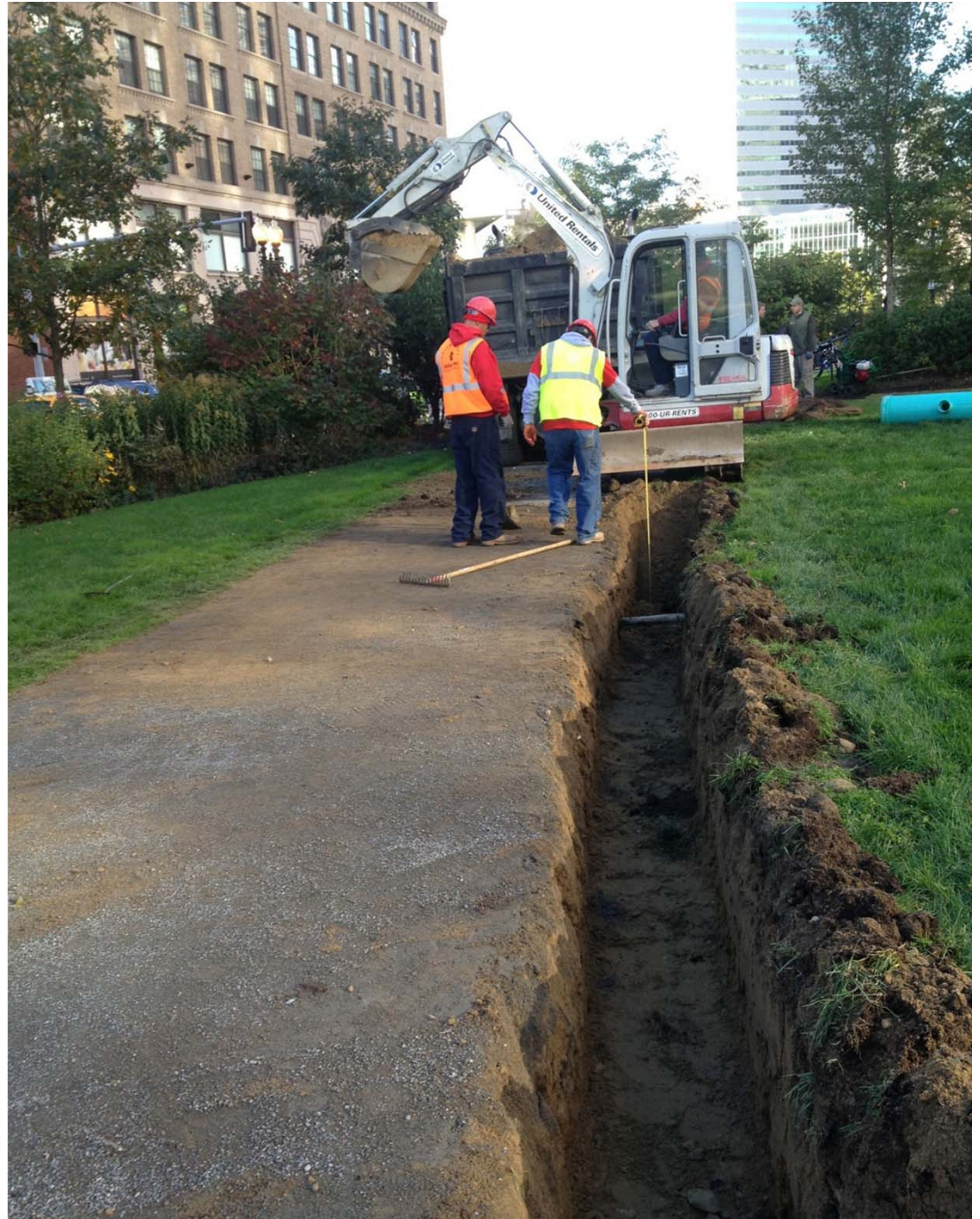
44 volunteers for National Public Lands Day



Volunteer efforts integral to park improvements



Mums in Chinatown Park



Drainage installation in Ft. Pt. Channel Park

Public Art RFQs

Winter Light RFQ - 2014/2015

- One artist selected to develop signature light artwork for the Greenway
- Request for Qualifications - \$5,500 stipends for three selected artists to create proposals
- Over 70 submissions received, 16 states & 7 countries represented
- Selection committee
 - Nina Bozicnik, *Curator*, Currier Museum of Art
 - George Fifield, *Director*, Boston Cyberarts
 - Shauna Gillies-Smith, *Principal Landscape Architect*, Ground
 - Stephen Knapp, *artist*
 - Helen Marriage, *co-director*, Artichoke, London, UK



Connection RFQ - 2015

- One artist selected to create an artwork that physically and/or experientially unites the segmented parks and communities along the Greenway
- Request for Qualifications - \$5,500 stipends for three selected artists to create proposals
- Over 100 submissions received from around the world
- Selection committee formation in process

