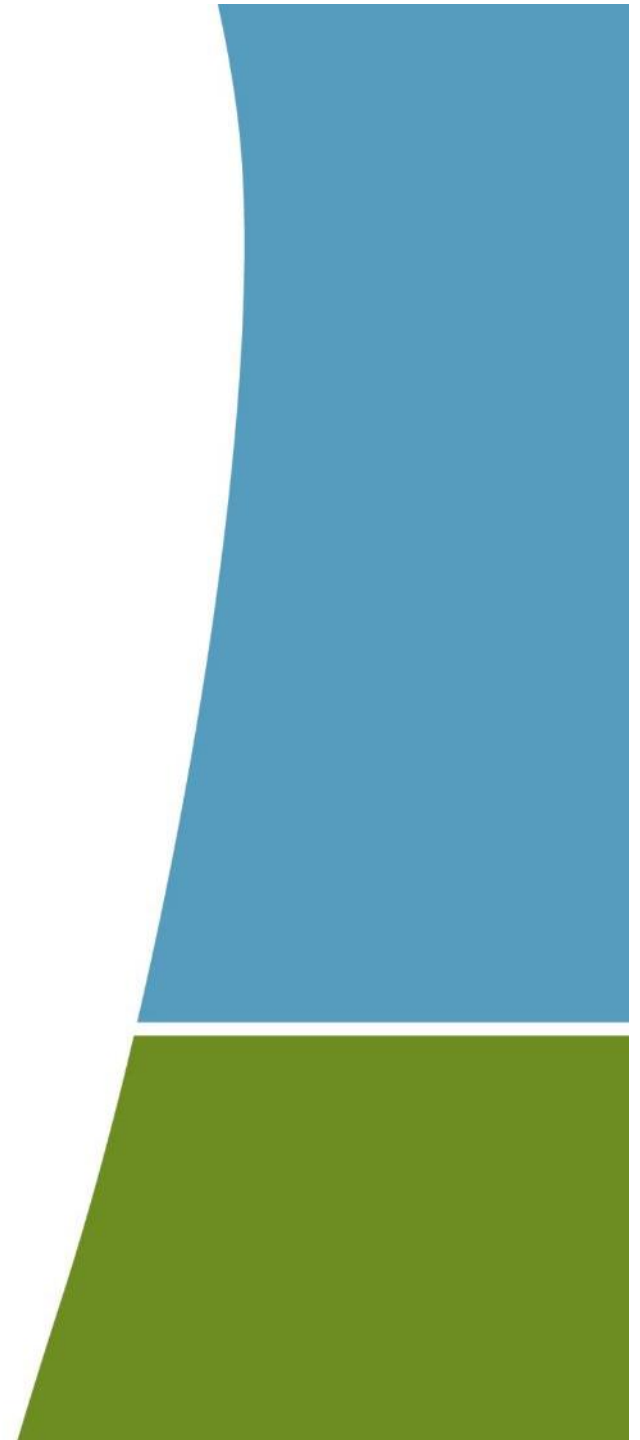


Janet Echelman aerial sculpture over the Greenway

Exhibited May – October 2015

February 24, 2015 Public Meeting



Agenda

- Welcome
 - *Justin Wyner, President, Wharf District Council*
 - *Susanne Lavoie, Executive Director, Wharf District Council*
 - *Jesse Brackenbury, Executive Director, Rose Kennedy Greenway Conservancy*
- Greenway Conservancy Public Art Strategic Plan & Selection Process
- Previous Echelman Installations & Greenway Concept
- Project Team & Concept Development
- Lighting Concept
- Preliminary Installation Plan
- Events & Programming
- Q&A

First Signature Installation in 5-year Public Art Strategy



PUBLIC ART ON THE GREENWAY

A FIVE-YEAR STRATEGY: 2013 - 2017



Greenway Conservancy Curatorial Committee

- Nick Capasso: Executive Director, Fitchburg Art Museum
- Geoffrey Hargadon: Artist, NEFA Board Member; SVP UBS Financial
- Ralph Helmick: Artist
- Young Park: RFKCG Board Member, President of Berkeley Investments
- Edward Saywell: MFA Contemporary Art Curator, Boston Art Commission
- Deborah Spiro: InterContinental resident, Neiman Marcus Co.
- Meejin Yoon: Architect, Artist, MIT faculty member
- Kate Gilbert: Artist, Greenway resident
- Robert Gordon: Harbor Towers resident; City North Development

Competitive Artist Selection: Echelman chosen out of 97 submissions from around the globe



The Space Between Us
Santa Monica, CA, 2013





Recipient:

2011 Guggenheim Fellowship

2012 Architectural Digest Innovator Award

2014 Smithsonian American Ingenuity Award in Visual Arts



Janet Echelmam

Significant support already in place

Presented by:

The Richard and Susan Smith Family Foundation

Major support by:

The Lynch Foundation, Autodesk, Anonymous, and ArtPlace America

Additional support by:

National Endowment for the Arts, Robert and Doris Gordon, NEFA, Goulston & Storrs, lumenpulse, Berkeley Investments

Media Sponsors:

CBS/WBZ, Boston Globe, Improper Bostonian, WBUR and Art New England

Partners:

Chiofaro Company, Tishman Speyer, InterContinental Boston, Celebrity Series, Mayor Walsh and the City of Boston and MA Department of Transportation

Collaborators:

Studio Echelman, Arup and Shawmut Design & Construction



As of 2.14.15

Her Secret is Patience, Phoenix, 2009

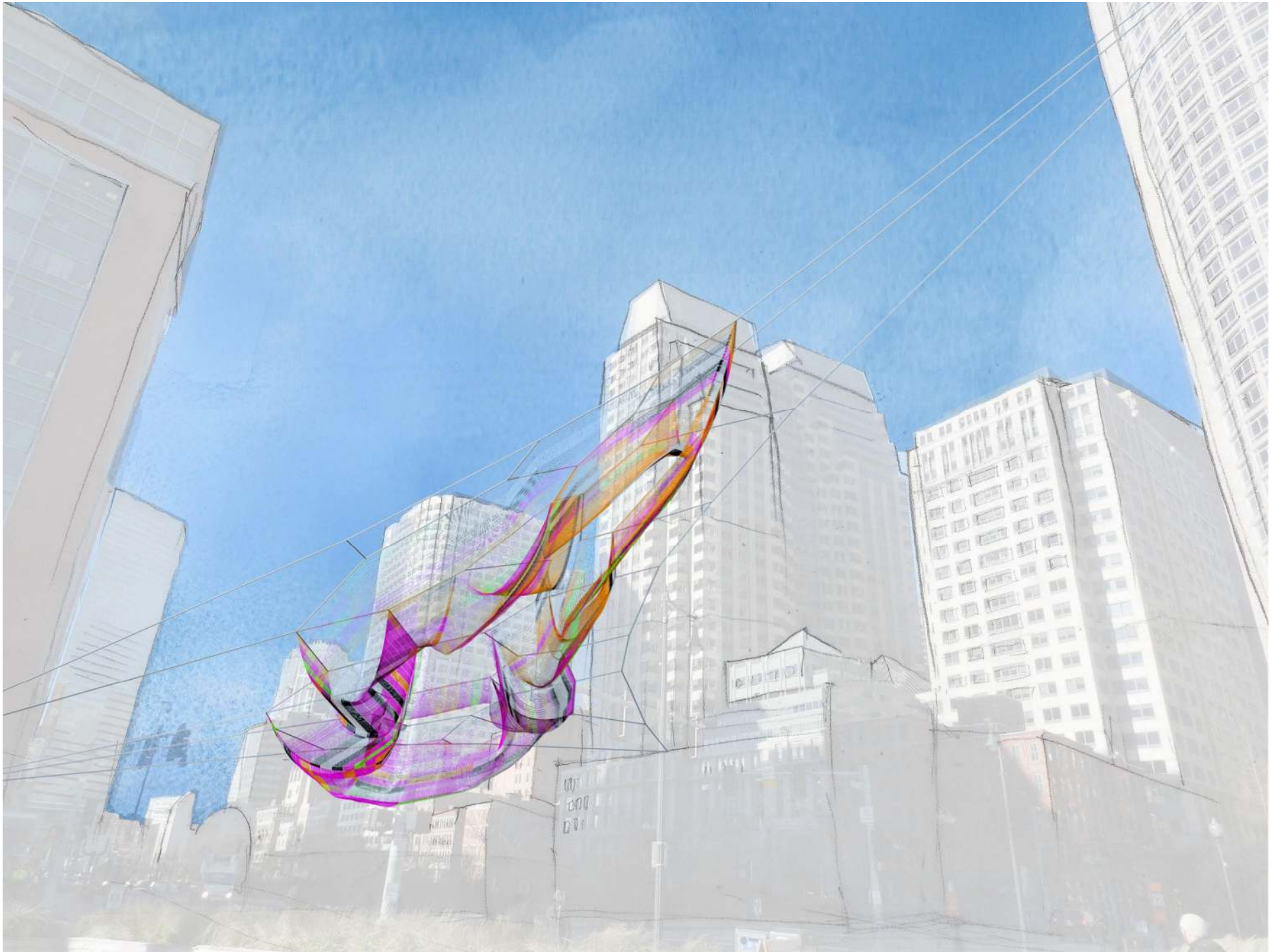


Skies Painted with Unnumbered Sparks, Vancouver, 2014

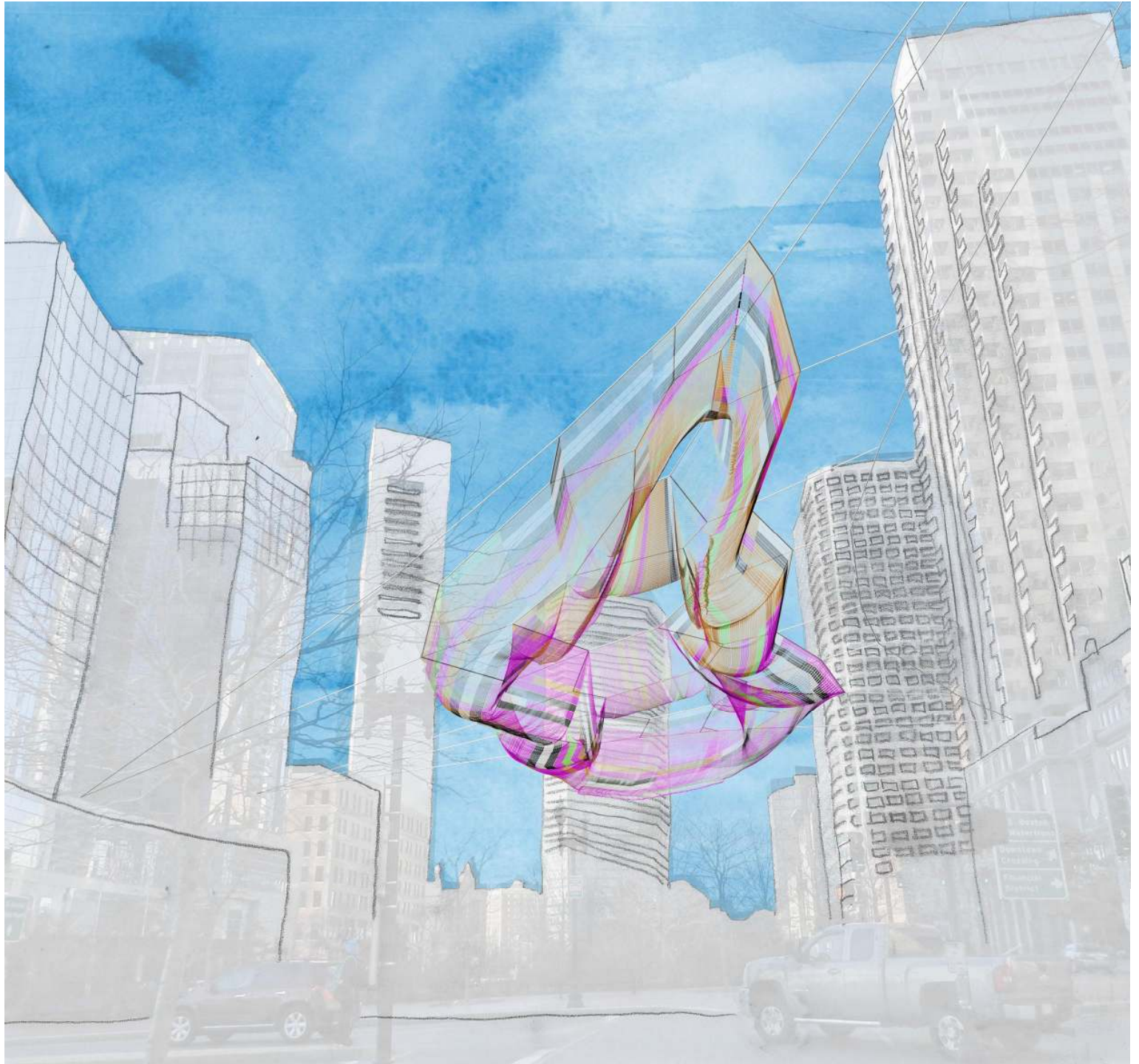


1.26, Amsterdam, 2012-2013



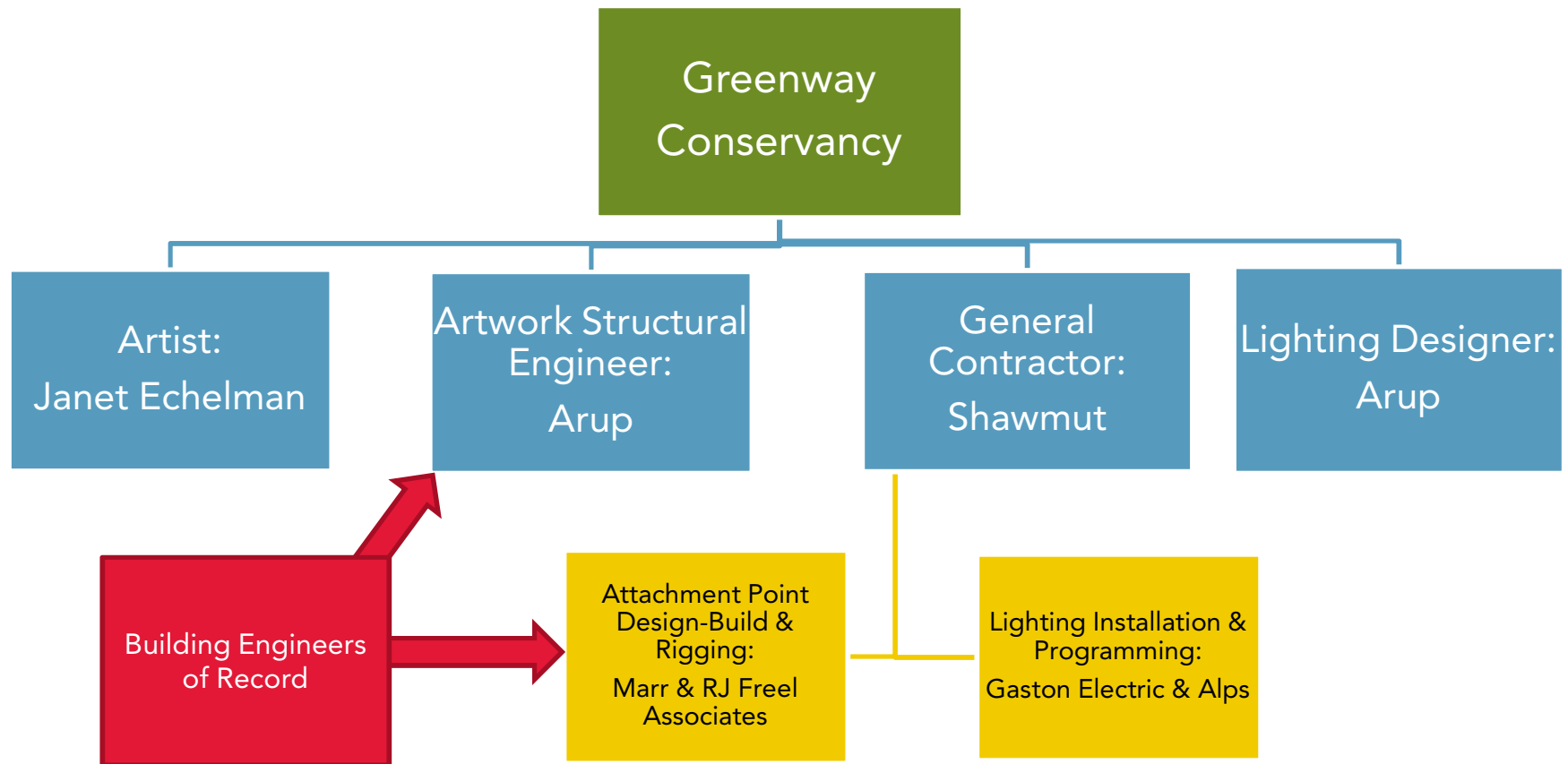








Project Team



Sculpture will be suspended over the central portion of Greenway, close to major destinations

- Attractions: Children Museum, ICA, Tea Party Ship Museum
- Major Hotels: Boston Harbor Hotel and the InterContinental
- Gateways: South Station, I-90 & I-93, Logan
- ½ Mile Radius: Convention Center, Faneuil Hall, Aquarium, Freedom Trail



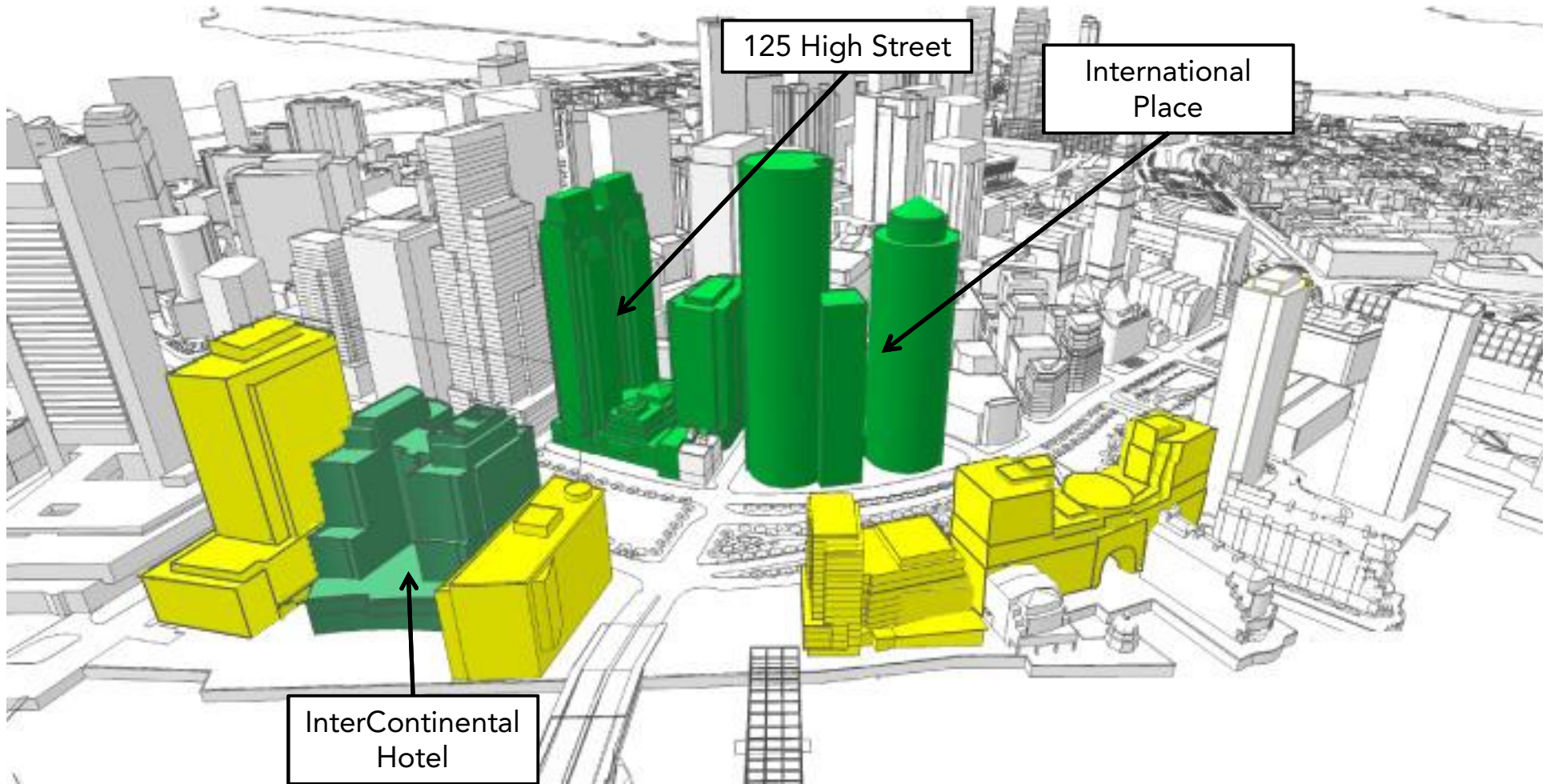
Initial Building Analysis



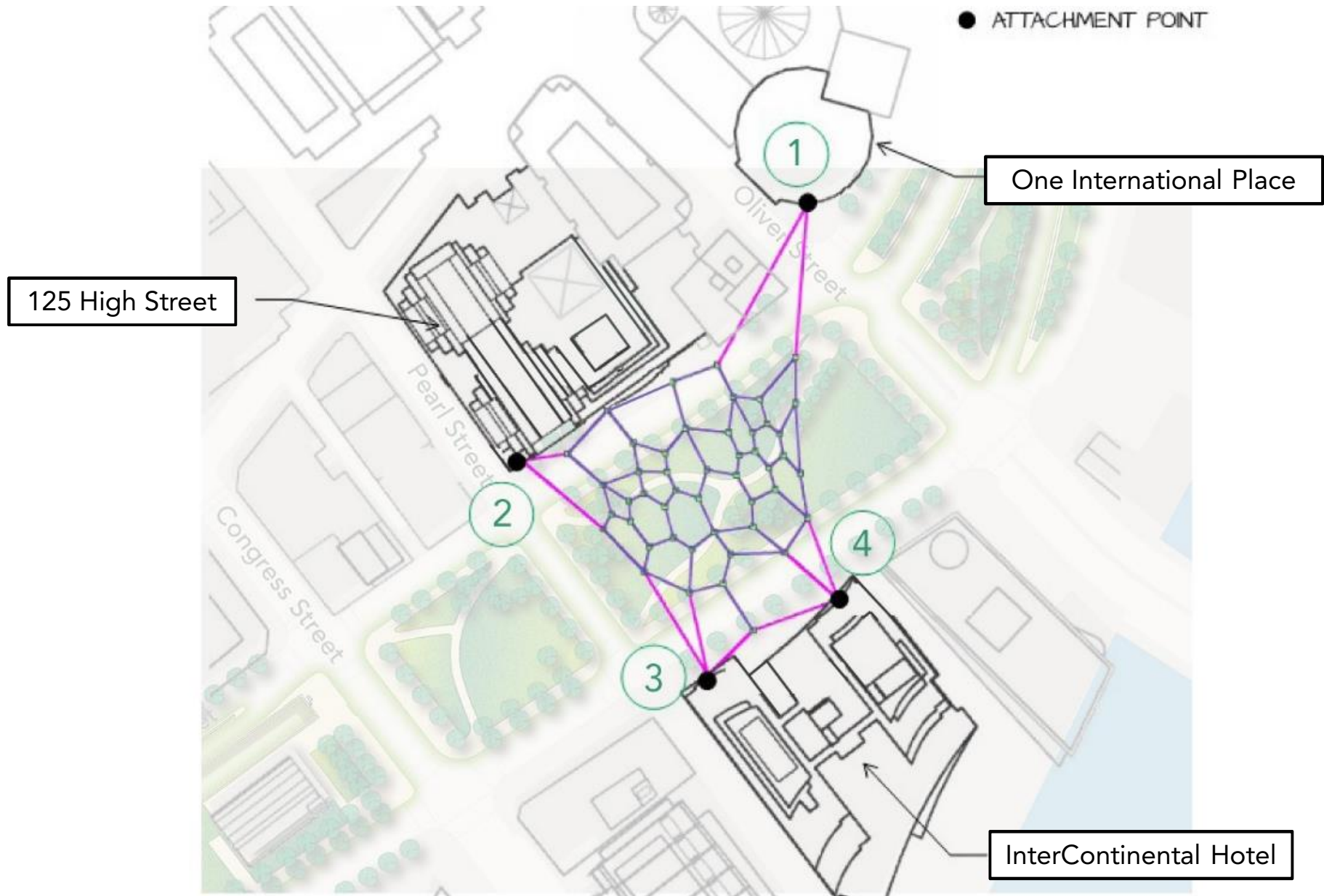
Initial Building Analysis

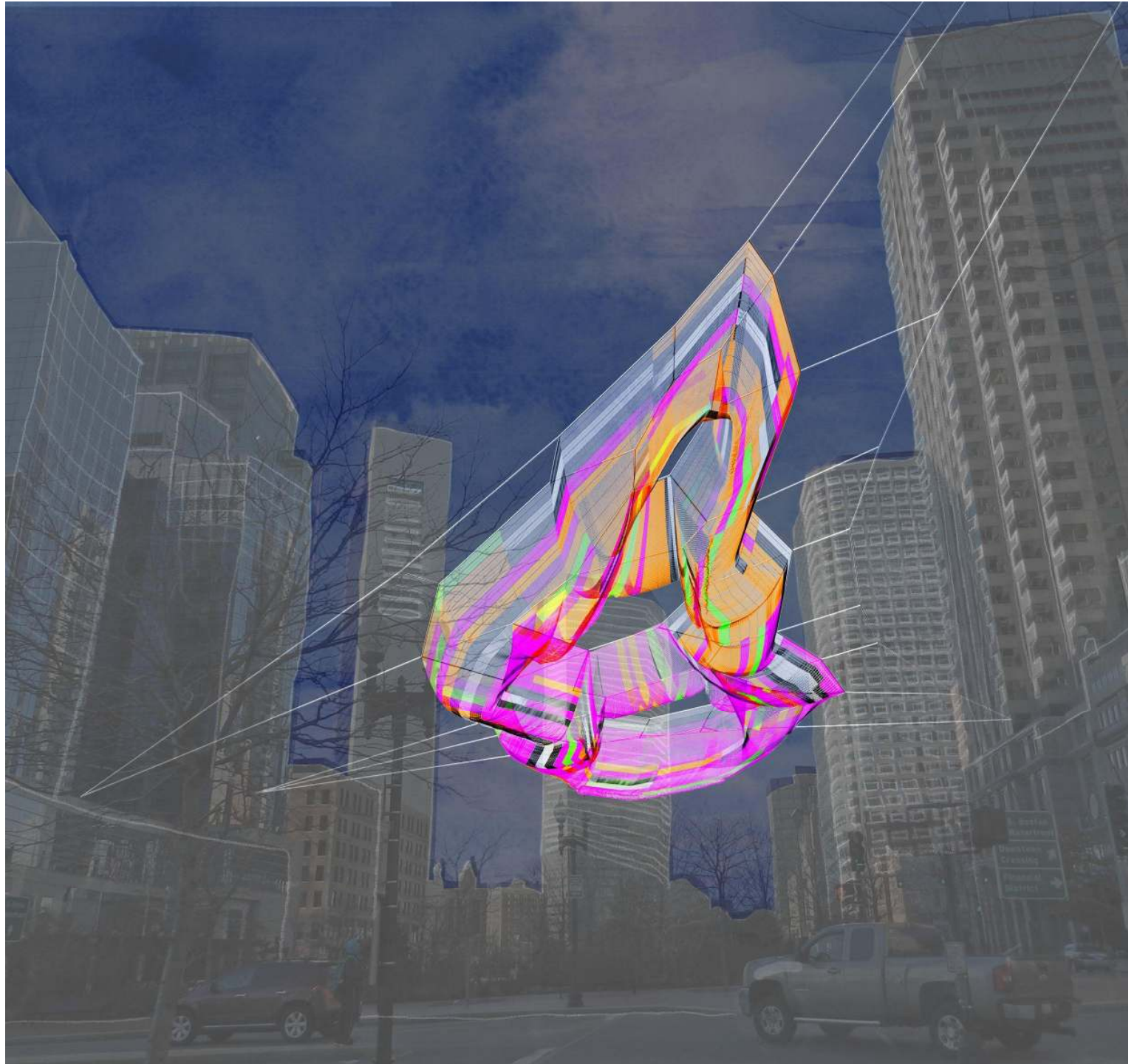


Final Attachment Buildings

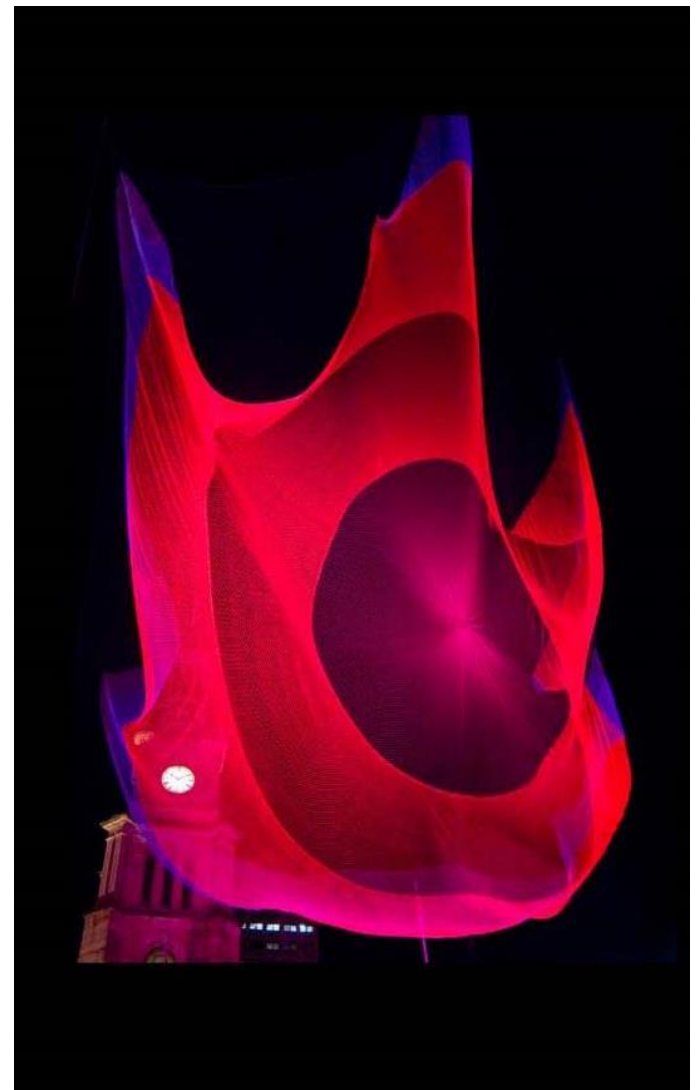


Attachment Points

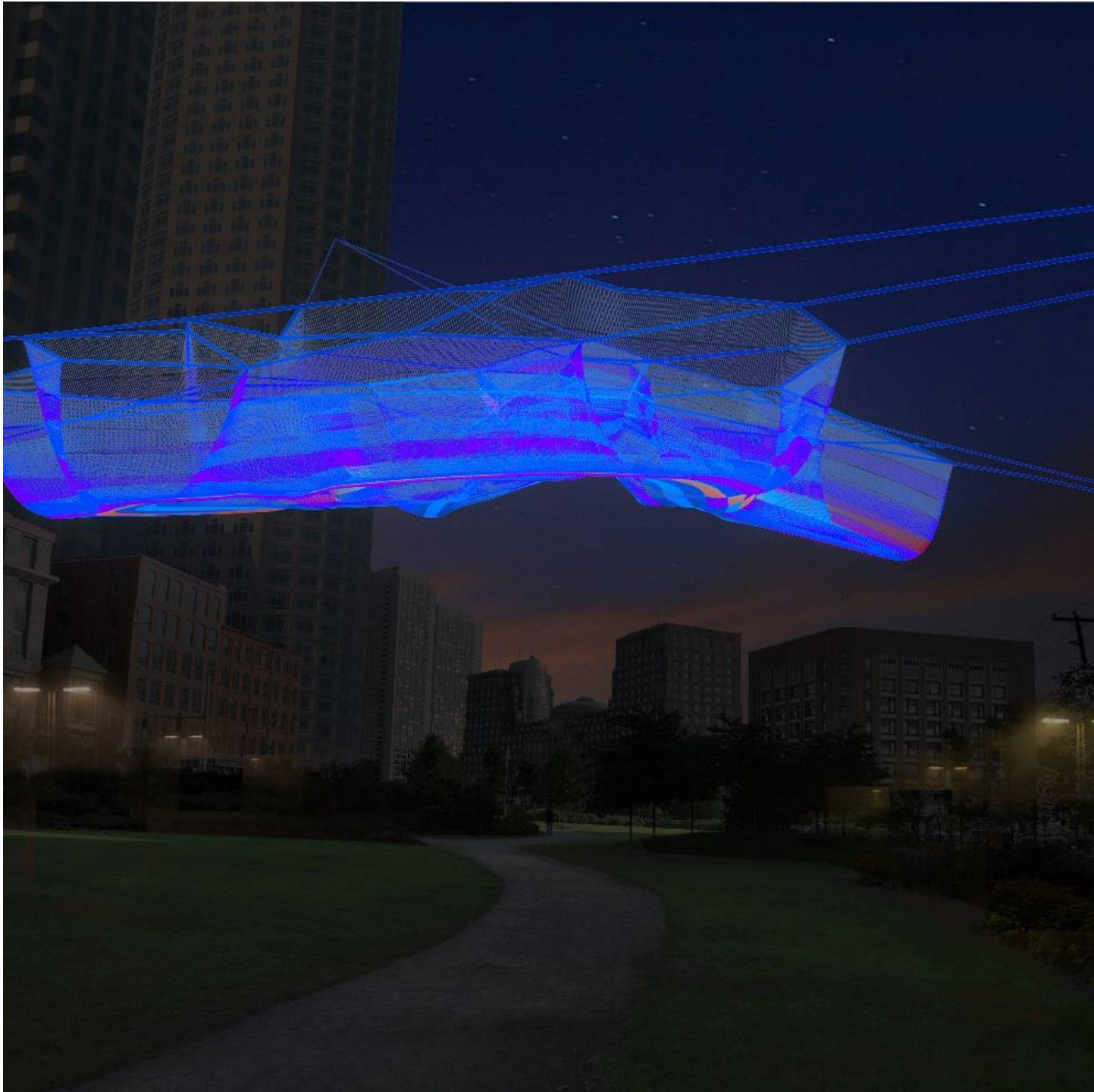


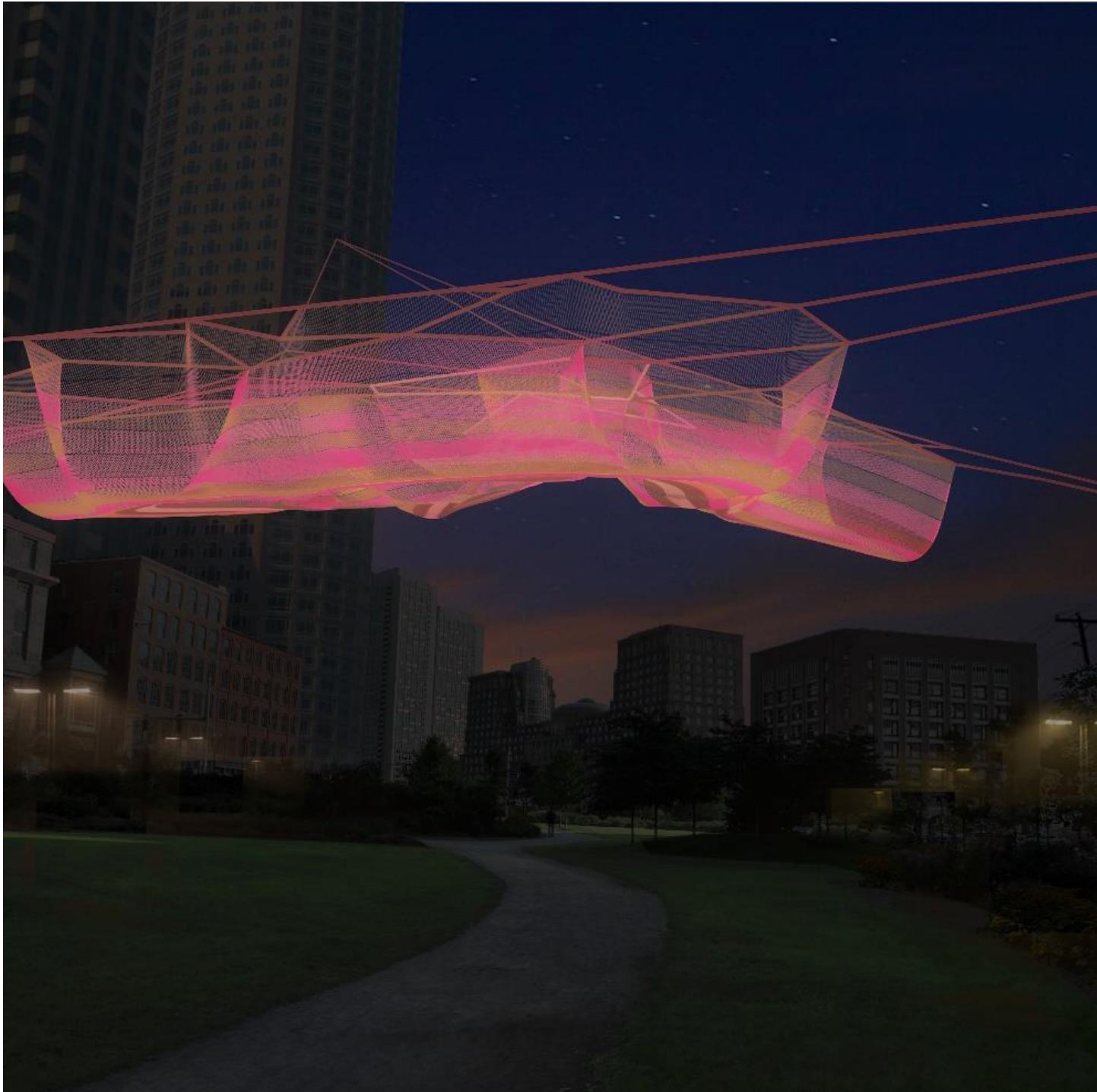


Lighting

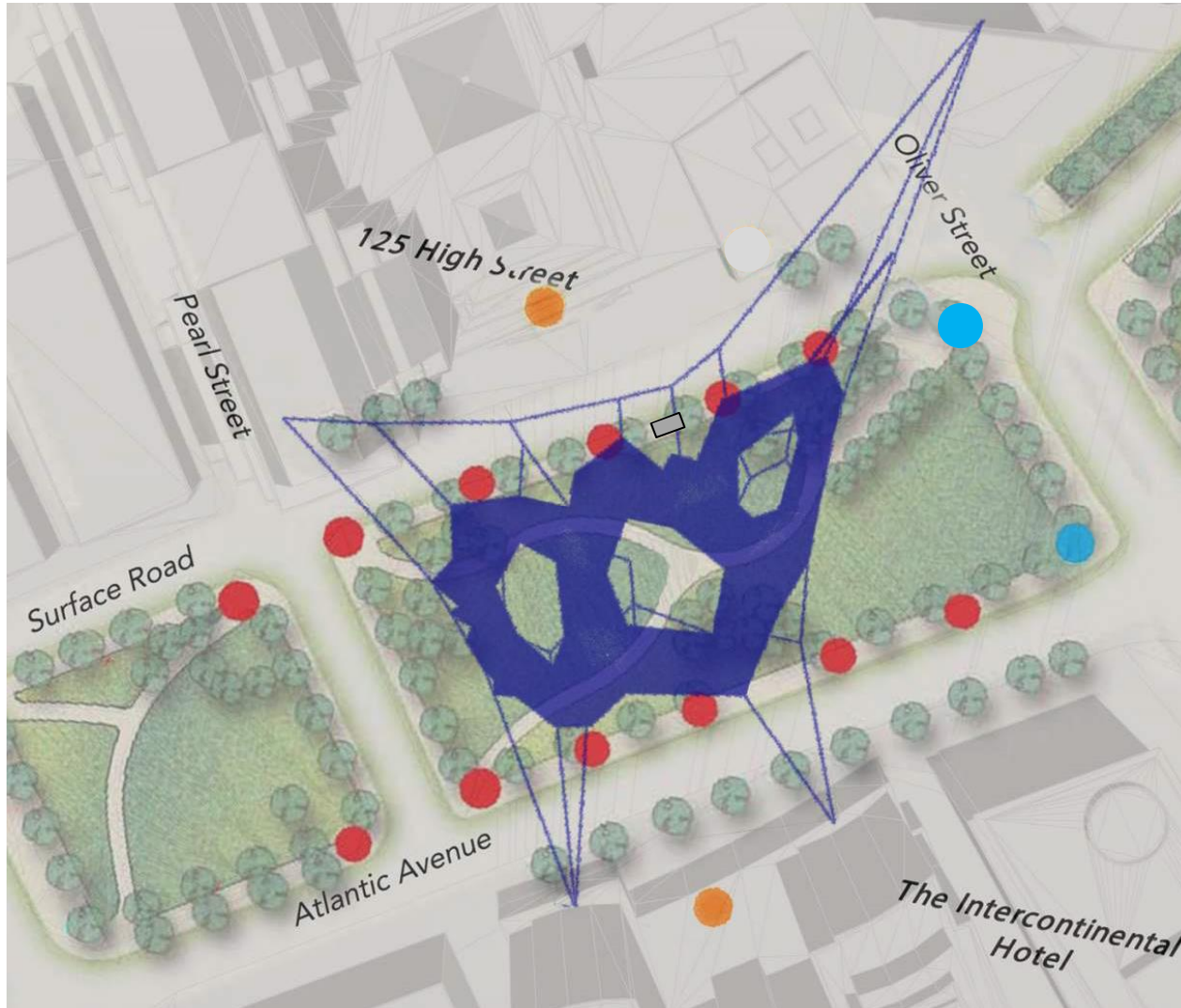


1.26, Sydney, 2011



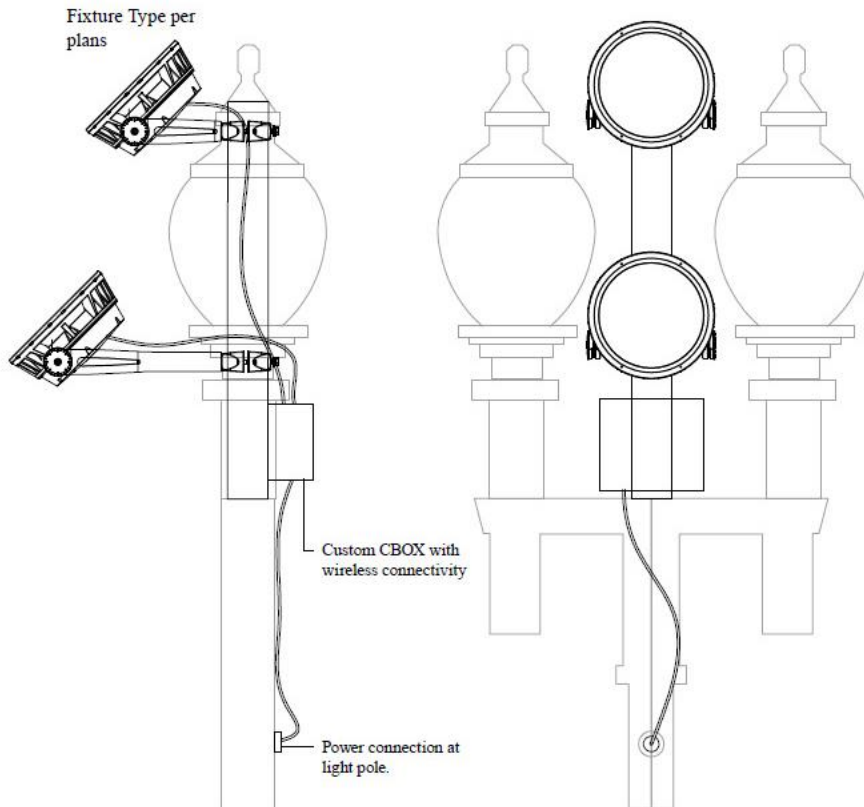


Lighting Locations



- 17
12 locations, 2 fixtures each
- 25 Light Poles
2 locations, 4 fixtures each
- Private Canopy/Terrace
2 locations, 6 fixtures each

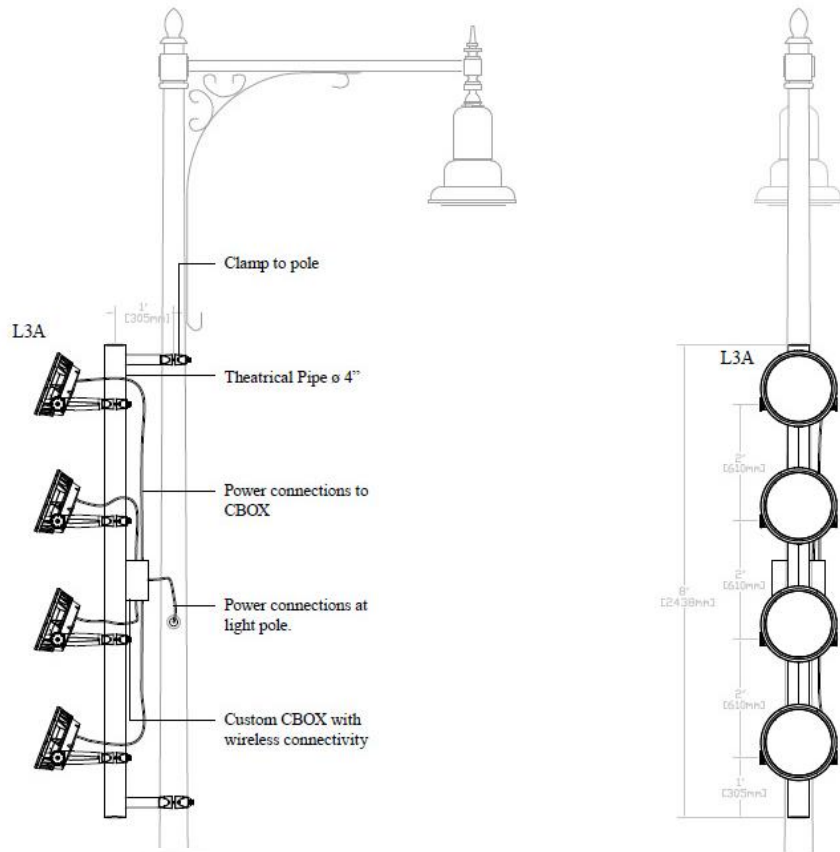
17



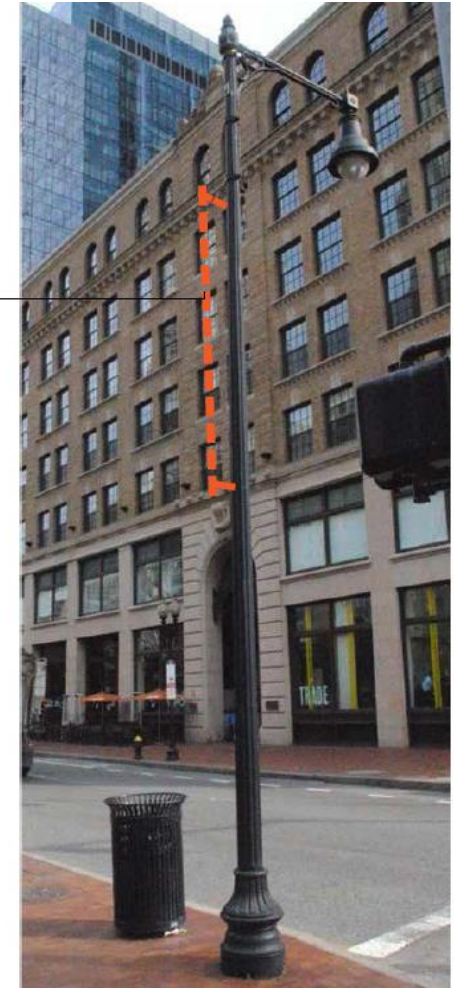
- Lumenbeam large LED Fixture (RGBW)
- Connected load per pole: 200 Watts



25



Location of theatrical pipe at pole above pedestrian reach



- Lumenbeam large LED Fixture (RGBW)
- Connected load per pole: 400 Watts

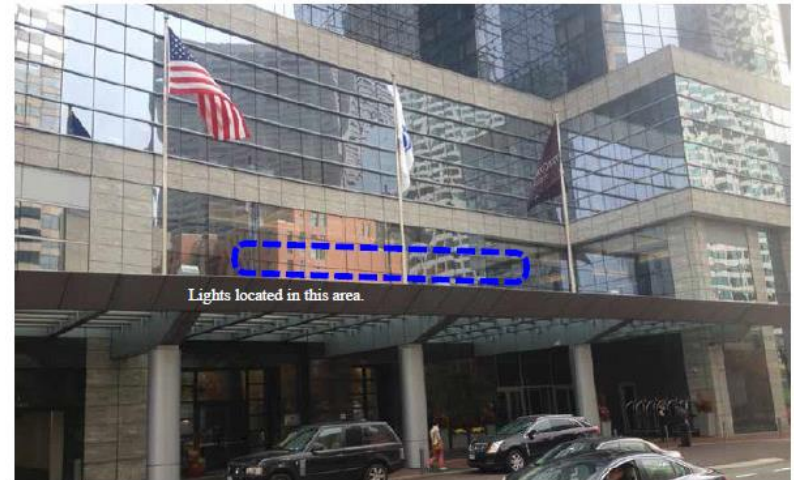
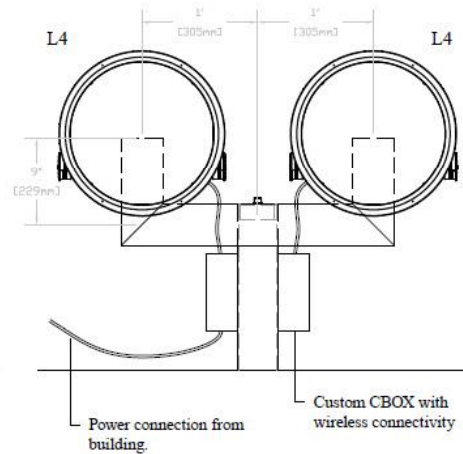
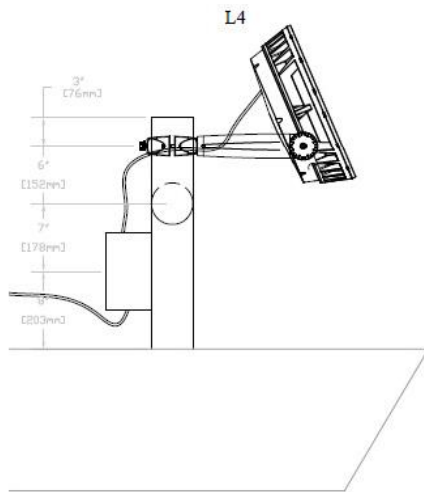
Roof/Canopy Lights



Lumenbeam Xlarge LED Fixture
(RGBW)

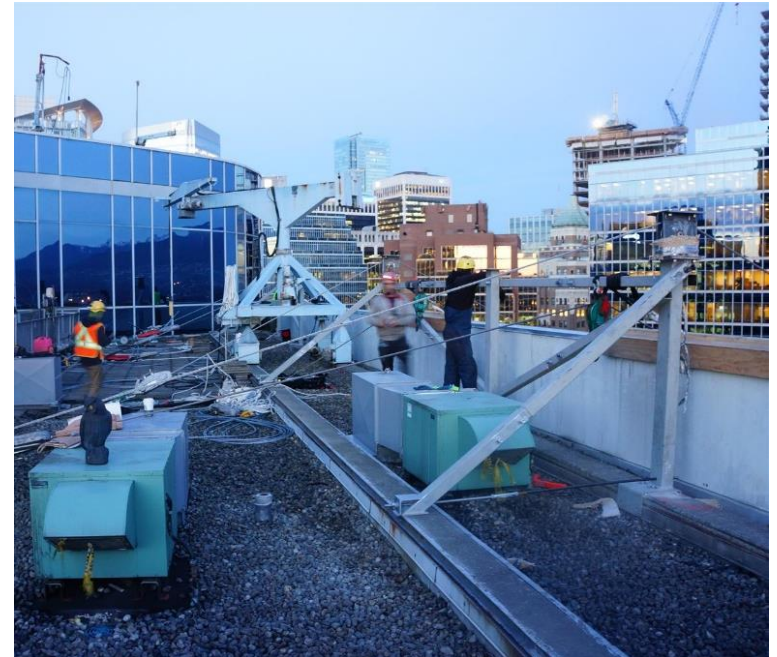
Connected load at Intercontinental:
600 Watts

Connected load at 125 High Street:
600 Watts



Installation Phase I: Attachment Point Construction

- Target Dates: April 1 – May 1
- 5-7 day construction duration per attachment point
- Fire station and parking garages will have unimpeded access at all times
- Staging & small crane/boom lift on sidewalks
- Cones & signage to redirect pedestrians
- Police details during scaffolding assembly



Attachment Point Construction Staging Example

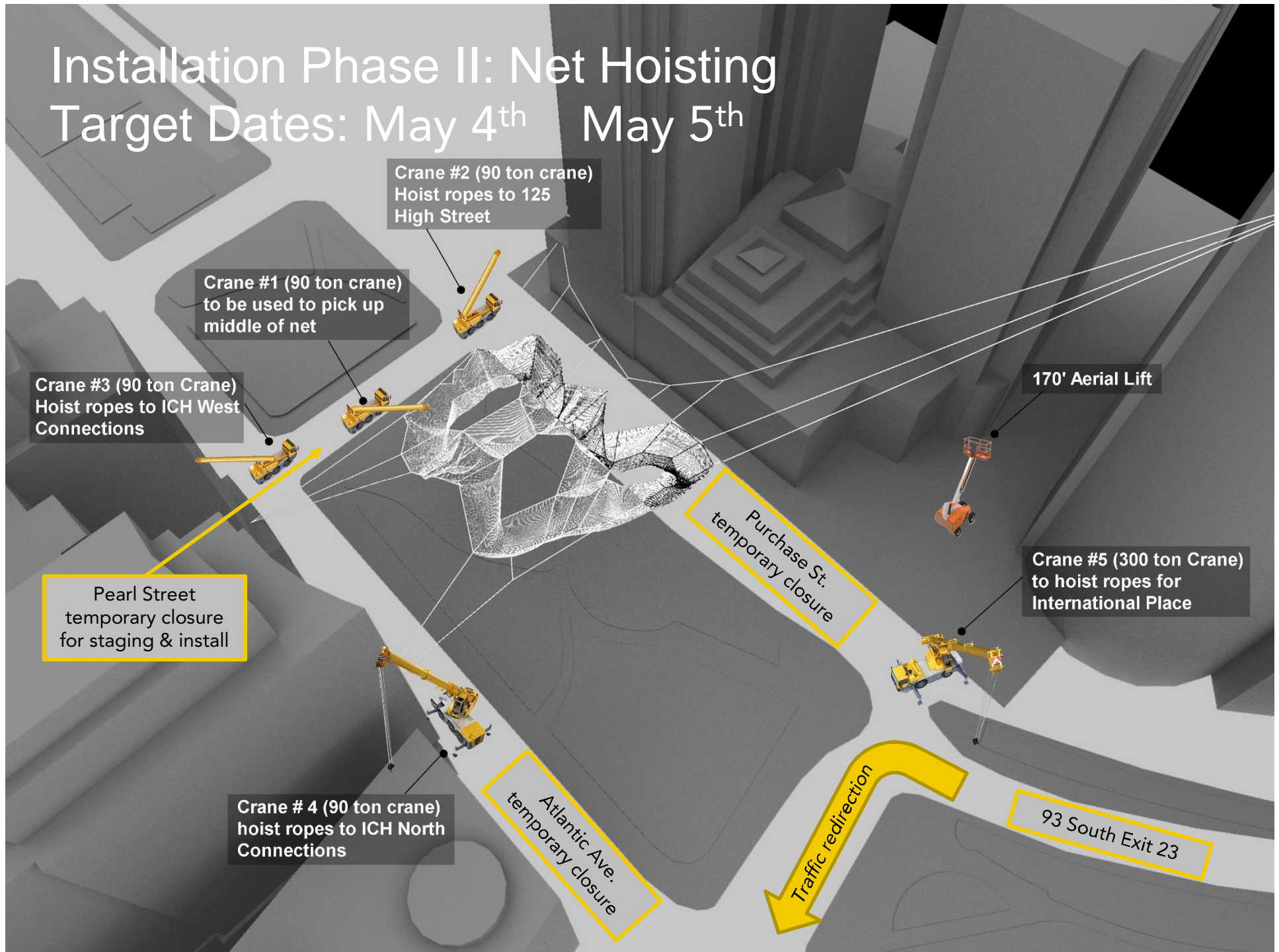


Overnight Installation Example: Vancouver



Installation Phase II: Net Hoisting

Target Dates: May 4th May 5th



Key Dates

- April 1- May 1: Attachment point construction & lighting installation
- April 27 (tentative): Site staging begins
- May 4 - 5 (tentative): Overnight net hoisting
- May 11th: Target Grand Opening

Programming: 20 Greenway events will bring thousands to enjoy the Echelman aerial sculpture



~ 4 Community days (food trucks, carousel, horticulture, public art and fountains)



1 INTER/SECTIONS creative engagement series



Six months of biweekly performance events

Community Outreach & Contact Information

- Informational meetings & briefings with
 - Resident groups & neighborhood organizations
 - Support building tenants and abutters
 - City, State & Federal elected officials
- Conservancy Contacts:
 - Michael J. Nichols (mnichols@rfkgc.org)
 - Laura Jasinski (ljasinski@rfkgc.org)

Thank You



Q&A

with the Project Team