



# THE GREEN WAY

*Annual Report 2022*

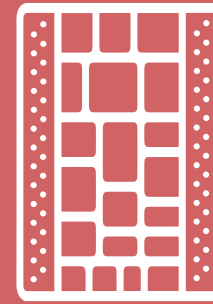


# OUR YEAR AT A GLANCE

For all who visit—from residents making their way daily through our lawns and gardens to visitors seeking adventure and exploration on new and unfamiliar pathways—The Greenway is far more than just a downtown park.

From block to block, neighborhood to neighborhood, The Greenway is an ever evolving, open-air invitation to gather, play, unwind, and explore in beautifully cared for green space within the backdrop of downtown Boston.

In 2022 the Conservancy renewed its dedication to enlivening the downtown experience with verdant gardens and lawns activated by stimulating programs for everyone who encounters our oasis in the heart of the city. We completed construction and opened North Meadow on The Greenway at the northern terminus of The Greenway, converting a neglected triangle into a vibrant, green neighborhood park. We welcomed the return of a full park season of programming, markets, and festivals, with more than 320 events that were free and open to the public. We showcased eight public art exhibitions that invited Boston to reconsider and reimagine its sense of self as a city.



## 6,677

**linear feet of joints** in the granite paving on The Greenway were repointed and recaulked.

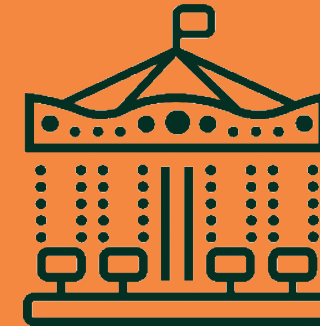


## 584

**volunteers** contributed to the beauty of The Greenway by donating **3,310 hours** of their time and hard work.

## 300+

**free events** on The Greenway showcased the ingenuity and breadth of our community.



## 1,325

**flowering native perennials, supporting pollinators, and beneficial insects** were planted.

## 30+

**artists** supported through new commissions, performances, and projects.

## 2,000

**people** attended the Conservancy's first Mural Block Party.



## 64%

**of the food truck entrepreneurs** on The Greenway identified as women or minority-owned businesses.





The Greenway is one of my favorite places to walk in Boston. The gardens and parks are so beautiful and they have great events throughout the year. Today I had the opportunity to give back by volunteering to do some spring cleanup in the meadow and the rose gardens. The staff was so welcoming, knowledgeable and well organized. Can't wait to do it again!

– Greenway Conservancy Volunteer

*Left: Volunteers watering flowers & plants in the Dewey Demonstration Garden in the summer.  
Right: A couple walking in the Carolyn Lynch Garden  
Photo credit: Anthony Crisafulli*





# A Message from the Executive Director & Board Chair



Dear Friends,

In 2022, The Greenway continued to be a treasured asset and an agent of change for the entire City of Boston and beyond by creating vibrant opportunities for inclusive art and a diverse range of free programming, all in a lush park setting nurtured by organic ecological horticulture.

The Greenway Conservancy is proud of its role in helping to create a better city and region this year by:

- connecting neighborhoods and people through the robust return of inclusive, community-led programs throughout the park,
- taking action to address climate change through ecological plant care and healthy green space, and
- creating equitable outdoor spaces where, entirely free of charge, residents and visitors can engage with public art and exquisite landscapes.

We are indebted to our generous community of donors who play such an important role in supporting the Conservancy's work to make The Greenway a place of connection, joy, renewal, and reflection in the heart of downtown Boston for residents and visitors alike.

We hope to see you soon on The Greenway!

With gratitude,

A handwritten signature in black ink, reading "Chris Cook".

Chris Cook  
Executive Director

A handwritten signature in black ink, reading "Doug Husid".

Doug Husid  
Board Chair

*Chris Cook & Doug Husid speaking at the North Meadow on The Greenway Ribbon Cutting  
Photo credit (Foreground): Lee-Daniel Tran  
Photo credit (Background): Chris Rucinski*





# Caring for The Greenway

**Our landscape management program is guided by the ecology of our park. We are dedicated to the practice of ecological horticulture to create and maintain resilient landscapes that connect people to nature and each other.**



## North Meadow on The Greenway

Construction of the new North Meadow on The Greenway was completed in the spring, opening up a brand new space that is both a gateway to The Greenway and a pocket park for residents and visitors to the surrounding neighborhoods in the West End and North End.

In planning and design, the community prioritized maximizing nature, creating a place of serenity, and showcasing the site's history. Serving as a tribute to the Charles River's estuarine ecology, the park's native meadow plantings and unique boardwalk create a sense of enclosure and tranquility.



*City officials, board members, supporters, and the public gathering to celebrate North Meadow on the Greenway Ribbon Cutting  
Photo credit:  
Left: Anthony Crisafulli  
Top: Chris Rucinski  
Right: Lee-Daniel Tran*





# Ecological Horticulture

Over the past 10 years, our horticulture team has nurtured The Greenway’s soil life by brewing and applying organic compost tea. Our horticulture is increasingly robust and resilient through our additions of more native species and work adapting to changing sun/shade patterns. Now that the park is established, we are better tailoring our maintenance efforts to the park’s ecological needs, reducing inputs and conserving water wherever possible.



*Greenway Staff planting sunflowers for the Ekua Holmes & London Parker-McWhorter 'Seeds of Justice' installation  
Photo credit: Tarik Bartel*



*Photo credit: Anthony Crisafulli*



In low-traffic areas of the park, we participated in and publicized Plantlife’s No Mow May, an international initiative to support pollinators, reduce lawn inputs, and grow healthier lawns by not mowing for the entire month of May.

Our urban orchard and edible gardens in Dewey Square produce ~200 lbs. of fruit and vegetables every year. In 2022, we donated this produce to St. Francis House, a nearby non-profit organization that serves individuals experiencing homelessness.





## Maintenance & Improvements

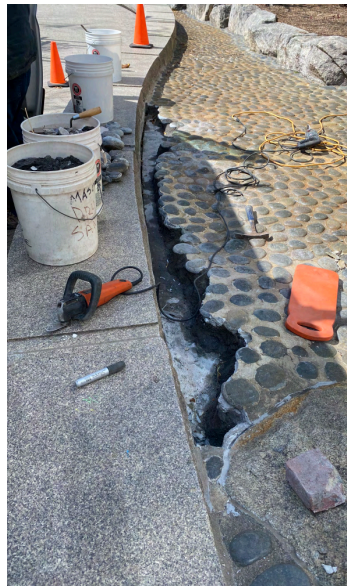
Our creative and resourceful Maintenance team cares for six fountains, acres of granite paving, complex lighting systems, and the support infrastructure for the Conservancy's programs and public art installations. They also ensure the cleanliness and safety of the park, and more.

In 2022, the Maintenance team managed the repair and repainting of the beloved creatures of the one-of-a-kind Greenway Carousel at the Tiffany and Company Foundation Grove. They also enlarged the openings in the pavement around the trees surrounding the Carousel to accommodate expanding roots.

To proactively guard against storm surges brought about by climate change, we protected the complex equipment that operates two of our popular water features. We sealed all penetrations in the equipment vault walls at the Rings Fountain and replaced the equipment vault hatch with one that is water tight at Harbor Fog.

In Dewey Square, the Maintenance team created a new picnic table and benches, with an integrated accessible component. In Chin Park, they brought cooling features to this urban heat island by adding a water misting station and a water bubbler. They also supported the park's ecology by building eight pollinator houses and three Elm Bark Beetle traps.

*A person enjoying the summer sun in one of the many public fountains on The Greenway.  
Photo Credit: Anthony Crisafulli*







## Rangers

Greenway Park Rangers ensure a safe and welcoming park experience for all visitors. They provide visitor and public safety services to the general public, and alleviate chronic homelessness on and around The Greenway by connecting people experiencing homelessness and addiction with local services.

Top: Greenway Staff during their self defense training class organized by the Rangers.  
Left to Right: Rangers Jill, Garrett, and Trina  
Photo Credit: Anthony Crisafulli



Left: Ranger Trina giving directions to a passerby.  
Right: Rangers Garrett and Jill enjoying a mid-day break during the Pups in the Park event.  
Photo Credit: Greenway Staff





# Volunteers

Our robust and welcoming Volunteer Program offers opportunities for individuals and corporate, non-profit, academic, and other community groups to experience hands-on learning while they assist us with park stewardship. In 2022, 584 volunteers contributed to the beauty of The Greenway by donating 3,310 hours of their time and hard work.

Several volunteers and Greenway Staff members maintaining the park  
Photo Credit: Greenway Staff



From those who volunteer once a year to those who volunteer once a week, we're so grateful to have such incredible volunteers who help us make The Greenway the best it can be!  
- Abigale Purvis, Volunteer & Programs Manager



# Public Art

We commissioned and presented eight public art projects that engaged restorative histories and charted new cosmologies that centered joy, interdependence, abundance, and wonder. Together, these works spoke to the power of collective imagination to envision and create more just and inclusive worlds, beginning with our public spaces.



We launched the season with the mural *Breathe Life Together* by Rob “ProBlak” Gibbs presented on the Greenway Wall in Dewey Square. The artwork centers a joyful, cosmic, and powerful depiction of Black youth and was created by the first Black Boston-native artist commissioned for the mural. In May, over 2,000 people attended the Conservancy’s first Mural Block Party, a community festival celebrating Gibb’s artwork and message that included hands-on art making, a live DJ, musicians, spoken word and dance performances, creative play for kids, and roller skating.

*Breathe Life Together* by Rob “ProBlak” Gibbs,  
Mural on Dewey Square.  
Photo Credit: G. Ortiz Photography

*Year of the Tiger* by Cheryl Wing-Zi Wong was a colorful pavilion that was formally activated with the **VISION/ VOICES** performance series throughout summer 2022, featuring over 12 local Boston-area AAPI artists and musicians, and co-curated by Pao Arts Center.

Spoken word and dance performance  
on the *Year of the Tiger* installation  
at Mary Soo Hoo Park.  
Photo Credit: Lee-Daniel Tran



Inspired by and designed to complement Gibbs’ mural, *Seeds of Love and Justice* by Ekua Holmes, featured hundreds of sunflowers planted in gardens surrounding the mural.

Vibrant *Seeds of Love and Justice*  
sunflowers on Dewey Square.  
Photo Credit: Tarik Bartel





*Lantern Stories* by Yu-Wen Wu was comprised of 31 lanterns that celebrate the past, present, and future of Boston’s vibrant Chinatown community.



Onlookers gazing at *Lantern Stories* as they walk through Auntie Kay and Uncle Frank Chin Park.  
Photo Credit: Mel Taing

*Tuhmaġatipi* (Dakota for “Beehive”) by Erin Genia was a sculptural habitat and water source for pollinators created using the Dakota morning star form and built with sustainable materials: clay, natural composites, and driftwood.



Photo Credit: Mel Taing

*Acknowledge + Listen: Undoing Colonial Design in Massachusetts* was co-designed by Lesley Art + Design students and faculty as part of their work to challenge the racist imagery featured on the state seal and flag of Massachusetts.



Photo Credit: Mel Taing

*Where The Land And Our Bodies Intersect* by Mithsuca Berry was a series of four digital illustrations printed on fabric flags and four vinyl text installations mounted on The Light Blades on The Greenway.



*Where The Land And Our Bodies Intersect* flags waving in the Wharf District.  
Photo Credit: Mel Taing

*As We Rise* by Wendy Yu was a site-specific video installation on the Federal Reserve Building that featured short bursts of freestyle-based street dance from 5 local dancers. Yu created the work in collaboration with street dance organization The Flavor Continues and projection artists ILLUMINUS.

Jahmier “Slingshot” Berry-Irvis freestyling.  
Photo Credit: Aram Boghosian





# Programs & Community

**We hosted more than 300 free events on The Greenway that showcased and supported the ingenuity and breadth of our community.**

Popular festivals returned in 2022, including Boston Local Food Festival presented by the Sustainable Business Network, the Caribbean One World Expo presented by the Authentic Caribbean Foundation, Jazz in the Park presented by the North End Music and Performing Arts Center, Films at the Gate presented by the Asian CDC, and the Lantern Festival presented by Chinatown Main Street. Let's Dance Boston by Celebrity Series of Boston offered five nights of free dance instruction and live music. Coolidge on The Greenway brought free movies with a Science on Screen series, and Street Stage returned with live opera performances. New partnerships brought the BAGLY Massachusetts Youth Pride Event and the Boston Music Project Festival to The Greenway.

We continued our deep engagement with the Chinatown community through reciprocal partnerships and community driven programs. Crowds gathered at the VISION/VOICES performance series at the YEAR OF THE TIGER artwork. Our weekly Chin Park play sessions engaged families from June to October,

and we again sponsored weekly lion dances at the Chinatown Gate to drive weekend tourism. We also gathered community feedback on a redesign for a section of Mary Soo Hoo Park that will provide more recreational and children's space in this busy neighborhood. Consistent with the Conservancy's commitment to supporting local entrepreneurs, The Greenway served as an incubator and platform for more than 100 small businesses through our food truck program, fitness series, and artisans and farmers markets. The majority of these businesses identified as women or minority-owned.

*Photo Credits (Top to bottom, left to right): G. Ortiz, Celebrity Series of Boston, Lee-Daniel Tran, BAGLY, Mel Taing, Greenway Staff, Lee-Daniel Tran*



'Breathe Life Together' Block Party



Let's Dance Boston



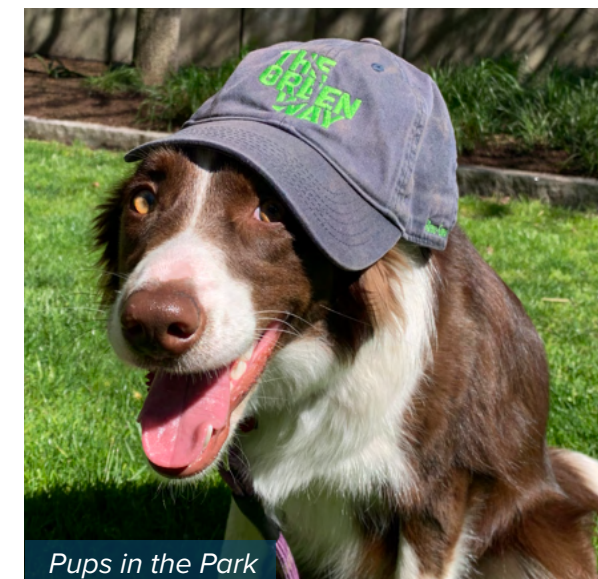
Jazz in the Park



Youth Pride



Films at the Gate



Pups in the Park



Greenway Carousel



Artisan Market



VISIONS & VOICES



# Donor & Supporters

The Conservancy gratefully acknowledges those whose gifts, pledges, and in-kind services have helped sustain our work between January 1 -December 31, 2022.

## \$100,000+

Annoymous  
Barr Foundation  
Boston Planning and Development Agency  
City of Boston  
Greenway Business Improvement District  
MassDOT  
Meet Boston

Morgan Stanley Eaton Vance Investment Management  
Jane and Neil Pappalardo\*  
Sal Lupoli  
VHB

## \$10,000 - \$24,999

Beacon Capital Partners  
Berkeley Investments, Inc.  
Boston Cultural Council  
Boston University  
Brookline Bank  
City of Boston Credit Union  
Coca-Cola  
Matt Conti\*  
Coverys  
Elia & Fannie Karas Foundation, Inc.  
Ernst & Young  
Negin and Oliver Ewald\*  
Faneuil Hall Marketplace  
Fidelity Investments  
Gibson Sotheby's International Realty

Gilbane Building Company  
Robert and Doris Gordon\*  
Hines  
Kirsten Hoffman\*  
Doug Husid\*  
John Moriarty & Assoc., Inc.  
Karen and Bruce Johnson  
JPMorgan Chase  
Rebecca A. Lee\*  
The Lynch Foundation  
Mass General Brigham  
National Endowment for the Arts  
New England Development  
Matt O'Malley  
Oxford Properties Group  
The Plymouth Rock Assurance Foundation  
Related Beal  
Samuels & Associates  
John and Phirin Shea\*  
Bradley Snyder\*  
State Street Corporation  
TD Charitable Foundation

Tishman Speyer - 125 High Street  
Gail Triggs\*  
Janet Veasey and Robert Binney\*  
Veolia  
Sheila Willard\*

## \$5,000 - \$9,999

Bartlett Tree Experts  
Jon and Barbara Basalone\*  
The Boston Foundation  
Boston Residential Group  
Boston Seaport/WS Development  
BXP  
Julie and Kevin Callaghan\*  
Canopy Boston Downtown  
CBT Architects  
The Chiofaro Company / International Place / Harbor Garage  
The Christmas Tree Shops  
Dwight and Helene Churchill\*  
The Druker Company, Ltd.  
Elkus Manfredi Architects  
Conor Finley  
Gazit Horizons  
Robertstone Goodridge and Joerg Ladny  
Rosalind Gorin and Matthew Budd  
Goulston & Storrs  
Harvard University

JLL  
Elizabeth L. Johnson\*  
Deniz and Scott Johnson  
Susanne A. Lavoie  
Liane and Bill Luke  
M&T Bank  
M&T Charitable Foundation  
Marc and Anne Margulies\*  
Larry Moulter and Pamela Frechette  
National Grid  
New England Aquarium  
Northeastern University  
Northern Trust  
Nutter  
Pembroke  
REI  
Roger and Hannelore Reiser\*  
Bud and Margaret Ris  
Jay and Laurie Roche  
Patrick and Kristen Ryan  
Helen Chin Schlichte  
Kimberly Sherman Stamler\*  
State Street Foundation, Inc.  
Stoss Landscape Urbanism  
Suffolk Construction  
Verizon  
  
**\$2,500 - \$4,999**  
Beacon Hill Garden Club  
Block By Block  
Cushman & Wakefield Inc.  
Mary Beth Curtis\*

JoAnne Dickinson and John Dickinson-Eaton\*  
Greater Boston Chamber of Commerce, Inc.  
HarbourVest Partners  
Highland Street Foundation  
Kenneth Hintlian  
Kimi Iguchi and Paul Gormley\*  
Jack's Abby  
Steven Johnson  
Massachusetts Convention Center Authority  
Massachusetts Cultural Council  
Michael Mars\*  
Mintz  
Allison Ryder and David Jones\*  
Jim and Danielle Schley\*  
Tufts University  
Rebecca and Jeff Tulman  
Raimund and Anne Vanderweil\*  
Volo Sports  
  
**\$1,500 - \$2,499**  
Naomi Aberly and Larry Lebowitz\*  
Advanced Power Services  
Berklee College of Music  
Breckinridge Capital Advisors  
BSC Group  
Michael and Joan Carragher\*

*\*Denotes members of the Greenway Circles, a group of generous individuals whose unrestricted operating support provides a strong foundation for the work of the Conservancy.*



Christopher Colbert and Kate Gilbert	Copley Wolff Design Group	Northwood Office	Matthew Littell	Kathryn Babb	Daniel Casey
Christopher Cook and Aine Ní Cheallaigh Cook	Corderman & Company, Inc.	OpenView	Neena Mathur	Anita Baglaneas	Frank and Anastasia Catrickes
Trudi and Robert Fondren*	John Crees and Patricia Doyle	Christine Petersen and Robert Wells	Stan McGee and John Finley	Carol Ball and James Re	Cityscapes Plant Care, Inc.
Gee How Oak Tin Association	Laura and Neil Cronin	Linda See	Gregg Moree	Jonas Barciauskas	Benjamin Clark
Goodwin Procter LLP	Elizabeth and Nicholas Deane	UpperEdge	Robert J. Murray	John Bascom	Nichola and John Collins
Greenberg Traurig, LLP	Carol and Charles Dockendorff	The Vertex Companies Inc.	Tony and Kitty Pell	Kimberley Beaudet	Peter and Patricia Cooper
Houghton Mifflin Harcourt	Teresa and James Dore	Zmags Corporation	Jeffry Pond	Sally Beecher and Harold Moren	Leslie Creedy and William Powers
Insperty LLC	Kathy and Mike Dunford	<b><u>\$500 - \$999</u></b>	David Pottier	Mary Bennett	Christopher Crosby
Debbie Johnston*	Marc and Judy Ehrlich	Alli and Bill Achtmeyer	Quebrada Baking Co.	Susann Benoit	Deneen Crosby
Salsify	Steven Elliott	Anonymous (3)	William Quinn	Barry Berman and Laura Gold	David Dalena and Brian Patton
Alex Senchak and Rumena Manolova-Senchak	Eventide Asset Management	Katharine Armstrong	Laura Rood	Mary Bertrand	T. Edmund Daly
Richard and Virginia Rundell*	Finegold Alexander Architects Inc.	BayCoast Bank	Peter Savy	Akriti Bhambi	Dianne Davis
Trillium Brewing Company	Kurt Flionis	Amy Brassard	Teil Silverstein and Jason Purdy	Katharine Black	Amy De Genaro
<b><u>\$1,000 - \$1,499</u></b>	Sylvia Hammer	Jeanne Burlingame	Charles Steenburg	Garen Bohlin	Nancy Dellarocco
Anonymous	Sarah Hancock	David Carp	Peter Strniste	Kermit and Isabel Borland	Dewey Square Group
Michael Axiak and Yalu Wu	Joanne Hayes-Rines	Frank Chin	Suffolk University	Priscilla Bradley	Sally and John Dias
Fernando Bent-Mullings	J O Hambro Capital Management	David Clayman	Brian Taylor	Walter Brassert	Naiwei Dong
Christopher Betke	James M. Kalustian	Kathleen Cook and Bruce McCue	Tighe & Bond	Helene and David Brodette	David and Melanie Dyer
Boston Chinatown Neighborhood Center, Inc.	Lawrence & Lillian Solomon Foundation	Cathy and Harvey Cotton	Mindee Wasserman	Andrew Brown	EarthShare
Boston Common Asset Management	Adam Lutynski	Geraldine Denterlein	Westminster Barrington Foundation	Douglas Brown	Westy and Susan Egmont
Burns & Levinson LLP	Sharon and Brad Malt	Marcia and Eric Gordon	Catherine and Craig Weston	Myles Brown and Judy Garber	Marc and Judy Ehrlich
Kathryn Burton and Chad Jackson	Alan and Eileen Maltzman	Green Associates, LLC	<b><u>\$100 - \$499</u></b>	Lewis Burleigh	Paul and Lisa Eisenberg
Dr. Christopher J. Fincham	Man Numeric Investors	Marjorie Greville	Peter Agoos	Risa Burr	Maddie Eldredge
Coolidge/Boreiko Family Fund	Jenny Morse	ITW	Angela Albanese	Keelin Caldwell	Todd and Susan Elmore
	Murray/Maloney Family Fund	Charles and Carla Kim	James Alexander	Ann Caldwell	Martha Erickson
	Nauset Strategies, Inc.	Peter Kochansky and Lauren Dias	Julie and Lee Andrade	Claire Cardella	Rosanna Fantasia
		Georgia Lee	Anonymous (11)	Dennis Carlberg	Marie Farrell
			Luz Arregoces	Catherine Carlock	Eileen Fay
			Ricardo R. Austrich, BSLA, BSC	Arthur and Lennie Carver	Claudine Fernandez
				Davida Carvin	Robert Fettig
					Leah Field

*\*Denotes members of the Greenway Circles, a group of generous individuals whose unrestricted operating support provides a strong foundation for the work of the Conservancy.*



Markendy Fils-Aime	Mary Hewlett	Deborah Simonds	Britt Miller	Richard and Sharon Polisson	Michael Schiano
Jerri-anne Finley	Erica Hirshler	Paula Konevich	Sharon Miller	Larry and Valerie Post	Peggy Scott
Anne Fitzgibbon	Michael Horowitz and	Katharine and Tom Kush	Julie Miller and	Sean Powell	Max Silverman
Cathryn-Jean Fleming	Eileen Mullarkey	Alex Landon	Paul Dansereau	John Pregmon	Sandra Simonsen
Deborah Flynn	Robert Hoyt and Mary King	Larz Anderson Auto Museum	Richard and Deborah Minns	Robert Qua and	Mark Snyderman
Douglas Foy	Tyson Humphries	Holly Laurent	Ashley Mohrman	Aimee Hendrigan	Angela Soo Hoo
Norm and Amy Fracassa	Judith Hurley	Richard and Linda Lawler	Kyra Montagu	Steve and	Barbara Sousa
Sarah Freeman	Greg Hyde	Carmen Leite	Mayo and Daniel Morgan	Alison Quackenbush	Duncan Spelman and
Kathryn Friedman	Linda Hyland and Lana Miller	Eugene and Janet Leone	John Murphy	Deborah Raboy	Elizabeth Grady
Jennifer Fulcher	Emily Hyle	Howard Levy	Andrey and Lisa Mykyta	Matthew and Linda Ramsden	Vikki Spruill
Kenneth Galan	Catherine Iacobo	Sylvia Lewis and Karin Lewis	Michael Nay	Meghan Reilly	Mary Stack
Cathryn and James Gannon	Mark Iafrati	Margaret Logan	Michael Naze	Maryclaire Reilly	Lisa Stanton Lenon and
James and Francine Gannon	John Iappini and	Paula Luccio	A. Lindsay Neagle	John Riccio	William Stanton
Cathleen Garman	Carole Mathieson	Sarah Luick	Peter and Beatrice Nessen	Bob Rizzo and	Ellie Starr
David Garrett	Judson Jacobs	Erik Lund	Emily Newell	Barbara Donovan-Rizzo	Robert and Joan Stein
Alan Gates	Thomas and Maryann Jalkut	Margaret Lynch	Margaret Novak	Mary Robinson	Philipp Steiner
Stephen Gildert	Laura Jasinski	Keith MacDonald	Todd O’Connell and	John Romano	Julie Steven
John and Sarah Giles	Mary Jean Shultz	Ann MacFate	Amy Hand	Perry Rosenfield	Janet Stewart
Robert and Patricia Gowdy	Elizabeth Johnson	Mary and David MacKenzie	Lawrence and	Marilyn and Mitchel Ross	Patricia and Wesley Stimpson
Eric Grady	Steven Jones	Deborah MacPhee	Helen O’Connor	Jacqueline Royer	Erik Storer
Ray and Joan Green	Martha Jones and	Joren and Lynn Madsen	Emily Palmer	Rob Rueckel	Kristen Struebing-Beazley
Groome/Belanger	Christine Armstrong	Amy Mahler	Robert and Joanne Paone	Gabriella Rufo	Benjamin Stuart
Family Fund	Roger Joseph and	Eve Marder	Hannah Parks	Kate Rushford	Prita Subramanian
Wendy Hamilton	Patricia Palmer	Nicholas Martin	John Parson	Barbara and Gordon Russell	Tech Networks of Boston
Margot and Peter Hanford	Joe Jovelle	Massachusetts Master	Stephen Passacantilli	Canan Safar	Tiger Group
Gail Hano	Li Jun Tsai	Gardener Association	Susan Passoni	Sayed and Maggie Saleh	Daniel and Virginia Thurler
Darrel and Mary Harmer	Marlene Kaplan	Karen Mauney-Brodek	Henry Paulus	Frederick and Mary Salvucci	Janet Tiampo and
Amber Haskell	The Keating Family Fund	Kenneth McIntire	Chris and Sylvia Perry	Sarah Salzman	David Parker
Per-Olof and Ann Hasselgren	Cynthia Kelly	Lynn McWhood	Alex Rogers Pittman and	Lydia Sampson	Lispeth Tibbits-Nutt
Lisa Hausmann	Eoghan Kelly	Angelica Medina	Robert Pittman	Sean Sanger	Claire Tomlin
William Henry	Gregory Kerwood	Patricia Meinhold	Plymouth Rock Assurance	Steven Santoro and	Sarah Bucknell Treco
Laurie Hergrueter	Meghan Klaric	Don and Pamela Michaelis	Corporation	Lidia Vitiello	David Geoffrey Underwood
Jill Herold	Stuart Kolodner and	Robyn Milbury	Shannon Polhemus	Tedd Saunders	United Way of Massachusetts



Bay and Merrimack Valley	Martin Benoit and	Mary DiZazzo	David Hahesy	Ambur Leczel	Chris Osgood
Janet Van Liere	Nadia Khatchadourian	Paul Donovan	Monica Halas	Ang Li	Marie Oum
Verisk Analytics	Rosemarie Boardman	Courtney Dwyer	Miles Halpine	Howard Little	Jane and Cosmo Papa
Rachel Walters	Kaitlin Bonk	Heidi Eakin	Frances Hauck	Jing Liu	Carolyn and George Parsons
Blake Webber	Nicole Bracco	Joanne Ekhaml and	Cole Hawkinson	Courtney Loughnane	Elisabeth Peterson
Karen and David Weinberg	Robert and Carol Brandon	James Gorman	Constance Henderson	Georgette Maloof	Carol Phelan
Robin Weinberger	Hannah Brown	Istvan Enyedy	Alexander Hernandez	Chris Mancini	Alexandra and Alex Phillips
Stephen and	Joshua Browning	Elizabeth Erickson	Theresa M Hluchyj and	Karen and Edmund Marcarelli	Tyler Post
Bette Weinberger	Matthew Burmeister	John Faricelli	Michael G Hluchyj	Bill Martin	Brian Prozeller
Glen and Marcia Weisbrod	Nat Casey	Florence and John Faro	Sam Hollands	Thomas McCabe	Esther Ratner
Cricket Weston and	Adam Castiglioni	Paige Fenstermacher	David Howell	Chelsea McDonnell	Michael Reilly
David Molinaro	Constance Cepko	Angela Ferrari	Kathryn and Robert Jacob	Neena McIlwaine	Celia Richa
Susan Wexler	Daniel Chen	Michael Fleming	Teresa Jacobson	Alexandria McPherson	Gary and Natalie Robinson
Brenda White	Patricia Cherney	Trish Fontanilla	Elisabeth James	Norman and Arlene Meisner	Terry Rockefeller and
Barbara Wiedenman	Alexis Chininis	Maryanna and	Amy Januskis	Sharon Merrill	J. William Harris
Dorothy and Richard Willey	Clara Chow	Charles Foskett	Tamani Jayasinghe	Diana Meservey	Susan Rodgerson
Melissa Williams	Lindsey Cimochoowski and	GE Foundation	Dawn Johnson	Margaret Michaud	William Rodriguez
Amy Wixon	Bradley Ruffleth	Trina Fritsch	Justin Johnson	Harold Michlewitz	Joanne Rogers
Tobias Wolf	Ryan Clark	L.J. & Nicole Gage	Katharine Jones	Stacy B. Miller and	Juliet Rothman
Jodi Wolin	Ashley Cohen	Daniel Galajda	Marc and Cynthia Joyce	Thomas R. Miller	Susanna Ryan
	Donna Cohen	Sandy Garces and	Rebecca and George Kangos	Maksim Mints	Paul Saperstein
<b><u>\$1 - \$99</u></b>	Michaela Colbert	Adam F. Strom	Mary Kate Gorman	Carolyn Mitchell	Johanna Schonmetzler
Royce Abel	Nancy Cooney	Janet Giele	Colin Keane	Henry Mittelman	Stephen Senna
Kathrine Aksadi	Lenore and Jon Cummings	Paul Gilbert	Melanie and Matt Kelly	Susan Moberg	Share Fund
Anonymous (11)	Heidi Daly Ford	John and Sarah Giles	Janet Kemp	Jordan Mooney	Sarah Shaughnessy
Matt Arsenault	Betsy and Stephen Davis	Nancy Gittelson	Kate Kerins	Sage Morgan	Patricia Shea
Autodesk Foundation	Paegan Deering	Palese Family Fund	Joanne Klys	Samantha Morrow	Joy Silverstein
Casey Baines	Michael Deese	PayPal Giving Fund	Gila Kornfeld-Jacobs	Lorraine Morse	Sarah and William Singer
Sandra and David Baird	Thomas Dellorusso	Patrick and Janice Glynn	Claire Kozower	Liz Najjar	Naomi Skoler
Elizabeth Baker and	John Delosa	Robert Goisman and	Lindsey Krenzel	Ashish Nanda	Amazon Smile
Robert Abbe	Paul and Helen Dewey	Jeanne Traxler	Lanie Kropp	Kathleen Naze	Jean Stewart
The Benevity Community	Anne Disarcina and	Remo and Silva Guastucci	Kelsi Kruszewski	John and Joanne O'Donnell	Ronald Suffers
Impact Fund	Beth Jakubowski	Jeanette Shea Gyukeri	Virginia Lawrence	Susan O'Hala	Kevin Synnott



Jesus Tamez  
Ethan Taylor  
Kelley Trieu  
Jessica Troe  
Sam Trulli  
Marcus Ulian  
Urbnparks.com  
Jeffrey Wade  
Janet Walton and  
David Harris  
John and Beverly Wand  
Sarah Weinstein and  
Kenneth Blumberg  
Margaret Wermer  
Jim and Margery Wieder  
Jared Williams  
Jarron Wilson  
Diane Woodward  
Lilian Wu  
Thomas Wycheck  
G. Elizabeth Wylde and  
Lance Drane  
Alyssa Zonghetti

**In Memory Of**

Peter Albanese  
Helen P. Banning  
Nancy Brennan  
Frank Chen  
Maria Coli  
Mary Soo Hoo  
Letitia F. James  
Marie Kensinger  
William M. (“Bill”) Snyder

**In Honor Of**

Sir Bosque  
Keelin Caldwell  
Chris Cook  
Dave and Deb Flynn  
Hugh Gorman  
Deniz Johnson  
Rachel Lake  
Sheila Novak  
Abby Parker  
Abigale Purvis  
PhuongDuy Tran  
Cathy Weston  
Yu-Wen Wu

**In-Kind**

90+ Cellars  
AHA  
Berklee College of Music  
The Best Bees Company  
Bully Boy Distillers  
The Chiofaro Company  
Canopy by Hilton  
Boston Downtown  
City Winery  
Coca-Cola  
Eastern Landscaping/  
Groundscapes Express  
G. Ortiz Photography  
Goulston & Storrs  
Groundscapes Express  
Harborside Inn, Cafe &  
Lounge  
JetBlue

Johnny’s Selected Seeds  
Kahootz Entertainment  
KHJ Integrated Marketing  
Marr Lifts  
Massachusetts Convention  
Center Authority  
MassDOT  
MAX Ultimate Food  
New Belgium Brewing  
Company  
NRS Consulting  
Tufts University  
Volo Sports  
Yotel



*Left: Father and child looking at the lanterns at Chin Park.  
Right: Children playing with bubbles by the Greenway Carousel.  
Photo Credit: Mel Taing*

# The Greenway Legacy Society

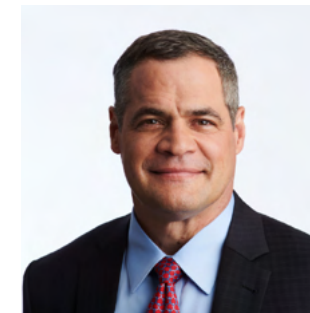
**The Greenway Legacy Society recognizes those who play a lasting role in securing the Rose Kennedy Greenway Conservancy’s future beyond their lifetime by making a bequest or other planned gift as part of their estate plan. We are indebted to the following Legacy Society members for their thoughtful generosity and stewardship.**

Robert and Doris Gordon  
Marlene S. Kaplan  
Rebecca A. Lee  
Janet Veasey and Robert Binney





Doug Husid  
*Chair of the  
Conservancy Board*



John Shea  
*Vice Chair of the  
Conservancy Board*

# Board of Directors

Alli Achtmeyer  
Hilina D. Ajakaiye  
Matthew J. “Matt” Conti  
Kate Fichter  
Conor Finley  
Yvonne Garcia  
Robertstone Goodridge  
Rosalind Gorin  
Carmine Guarino  
Kirsten Hoffman  
Deniz Johnson  
Rebecca Lee  
Jenny Morse  
Thomas N. O’Brien  
Linda See  
Kimberly Sherman Stamler  
Bradley W. Snyder

\*As of December 31, 2022



Karen Johnson  
*Treasurer of the  
Conservancy Board*



Susanne Lavoie  
*Clerk of the  
Conservancy Board*



*Greenway Directors and Board  
of Directors at the Gala on The  
Greenway at the Rings Fountain.  
Photo credit: Michael Blanchard*





# Financials

**The Greenway operates with a public/private funding model. Since its founding, the Conservancy has leveraged its government support to raise more than \$66M of philanthropic and other private funds.**

Spring 2022 began with a boost to philanthropy, when the Conservancy hosted its first in-person Gala on the Greenway and Glow fundraisers since 2019, resulting in record breaking attendance and support. Additionally, generous funding from our Foundation partners allowed us to foster community engagement in the park, particularly through programming and public art, and offset the loss of COVID related Federal government funding which was critical in 2021.

The Conservancy’s efforts to return to pre-pandemic levels in earned revenue successfully resulted in a 22% increase over 2021 revenue. The Greenway’s Food Vending Program, newly refurbished Carousel, and Trillium Beer Garden saw further growth, however overall, earned revenue remained down 33% from 2019, as much of the area’s workforce continued a hybrid work model.

The Greenway Business Improvement District (BID), the Massachusetts Department of Transportation (MassDOT), and City of Boston (City) support were consistent with the landmark 2017 multi-party funding agreement. The BID continues to provide \$1M annually for maintenance and horticulture operations, plus \$0.5M for enhancements. The City’s annual funding fluctuates with the performance of an invested trust fund. MassDOT funds maintenance, horticulture, and capital repairs, as well as providing in-kind support. Furthermore, the BID, MassDOT and the City (through the Boston Planning and Development Agency) all contributed funds for the construction of the North Meadow on The Greenway which opened with a ribbon cutting ceremony in July 2022. The year closed with the four parties (including The Greenway) successfully finalizing a Memorandum of Understanding which will extend this support through FY28. Completion of final contracts will occur in 2023.

The Conservancy continued to manage its budget conservatively in 2022, but worked to fill positions left vacant during the 2020/21 hiring freeze, increasing staff costs over 2021. Generous funding offset costs for new music, art and dance programming including The Greenway’s first ever mural block party and 2022’s winter lights program.

In keeping with our investment policy, the Conservancy drew from the endowment at a Board-approved 4.5% sustainable rate to fund current operations. Unfortunately, downward trends in the markets drove an overall decline in net assets for the year.

Operating Revenue and Support	FY22	FY21
Earned Revenue	\$ 1,101,848	\$ 906,169
Contributions, BID	\$ 1,163,850	\$ 1,256,257
Contributed income	\$ 1,407,565	\$ 762,040
Endowment draw for current operations	\$ 776,594	\$ 740,090
Government support, MassDOT	\$ 750,000	\$ 750,000
Gala & event revenue, net	\$ 528,748	\$ 428,309
Government support, City of Boston	\$ 294,927	\$ 271,533
Government support, grants	\$ 127,000	\$ 614,718
In-kind revenue, private	\$ 209,522	\$ 123,359
In-kind revenue, public	\$ 280,942	\$ 236,893
Other income and recoveries	\$ 136,164	\$ 14,673
Total operating revenue and support	\$ 6,777,160	\$ 6,104,041
Operating Expenses before Depreciation		
Programmatic	\$ 5,120,905	\$ 4,261,695
Fundraising	\$ 718,658	\$ 672,079
Administrative	\$ 687,199	\$ 646,770
Total operating expenses before depreciation	\$ 6,526,762	\$ 5,580,544
Depreciation	\$ 744,238	\$ 552,313
Non-Operating Revenue and Support		
Contributions, BID - Enhancements	\$ 336,150	\$ 243,743
Government support, MassDOT - capital	\$ 740,078	\$ 268,686
Contributions and Government support - capital	\$ 485,454	\$ 868,071
Investment income, net of fees	\$ (3,171,056)	\$ 2,668,541
Gain/loss on fixed assets	-	-
Endowment draw for current operations	\$ (776,594)	\$ (740,090)
Total non-operating revenue and support	\$ (2,385,968)	\$ 3,308,951
Change in net assets	\$ (2,879,808)	\$ 3,280,135
Net assets, beginning of the year	\$ 30,625,843	\$ 27,345,708
Net assets, end of the year	\$ 27,746,035	\$ 30,625,843



# In Memoriam

**We celebrate the life & legacy of our founding Executive Director, Nancy Brennan, who passed away in September of 2022.**



Nancy was a warm and unrelentingly positive leader who built the foundation on which the Rose Kennedy Greenway has thrived. She raised funds for the Greenway Conservancy's endowment and operations, and recruited and mentored a small, talented staff to transform the sparse green space that capped the Big Dig into a world-class park that reconnected neighborhoods and people.

Nancy's commitment to environmental stewardship fostered our innovative approach to organic horticulture. Her vision for a unique, whimsical carousel that would capture the hearts of visitors of all ages led to creation of the Greenway Carousel at the Tiffany & Co. Foundation Grove, now a beloved Boston landmark. Nancy spearheaded a community-driven public art planning process that produced the program that has presented dozens of acclaimed artworks on The Greenway and led a movement to reinvigorate contemporary art in public spaces throughout Greater Boston.

Nancy's legacy is felt not only on The Greenway, but well beyond as those she so generously mentored have gone on to lead programs and organizations throughout the region and across the country. In Nancy's "both/and" language - we grieve at the loss and retain joy in having had this extraordinary person touch our lives.



## Make today an adventure.

