

# North End Parks

## 2015 Improvements

02.25.2015



# 02.25.15 AGENDA

- Introduction Jesse Brackenbury
- 2015 North End Park improvements:
  - Maintenance Robert Stigberg
  - Furniture Robert Stigberg
  - Horticulture Stuart Shillaber
- New Greenway Lease Parcels Steve Anderson
- Park Programming – 2014 in review Charlie McCabe
- Q&A

# Park Maintenance

# Replace Substandard Bollard Lighting

These path lights are of average quality and not appropriate for this location. Poor structural connections have broken off and some wobble excessively.





# Repair Freedom Trail Lighting

Lights along the Freedom Trail are not functioning due to electrical issues and condensation build up.



# Restore Finish on Metal Railings

All railings in the North End Parks need to be refinished due to spray over from the fountains, along with general wear and tear as water has encrusted the railing surface.



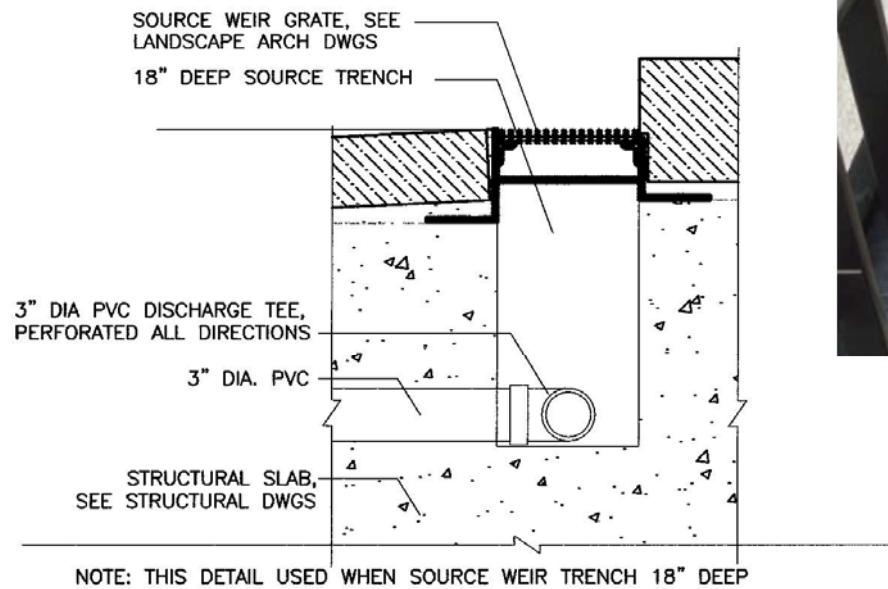
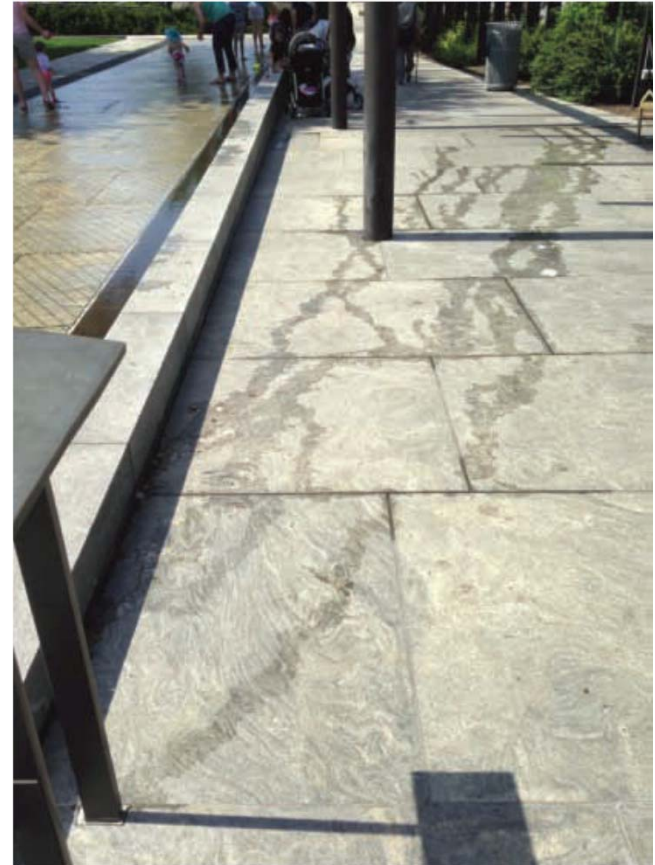
# Refinish Pergola Support Posts

Pergola posts in garden beds are corroding, with peeling metal and post degradation. The pergola will also be refinished where general wear and tear has degraded the paint finish.



# Fountain Leak on Parcel 8

Water leaks out of the fountain wall and onto the adjacent path. The Conservancy has taken measures to fix this problem and will assess the fountain this season to determine if further work is needed.





# Fountain Leak on Parcel 8



# Park Furniture



# Replace Benches

- Finish on the park benches has worn and chipped from use, sun damage and water damage. The solid metal construction is too hot in summer and too cold in winter.
- We will replace all 21 benches with a more appropriate bench style
- 8 of the 21 benches will be replaced with gliding “porch swings” under the pergola



*Existing park bench*



*New park bench – color not accurate*



# Gliding Porch Swings

8 of the 21 benches will be replaced with gliding “porch swings” under the pergola

**Status:** The Conservancy is currently waiting for the results of a structural analysis to determine if the pergola can safely support these swings.



# Gliding Porch Swings:

Rendering showing benches & swings under the pergola



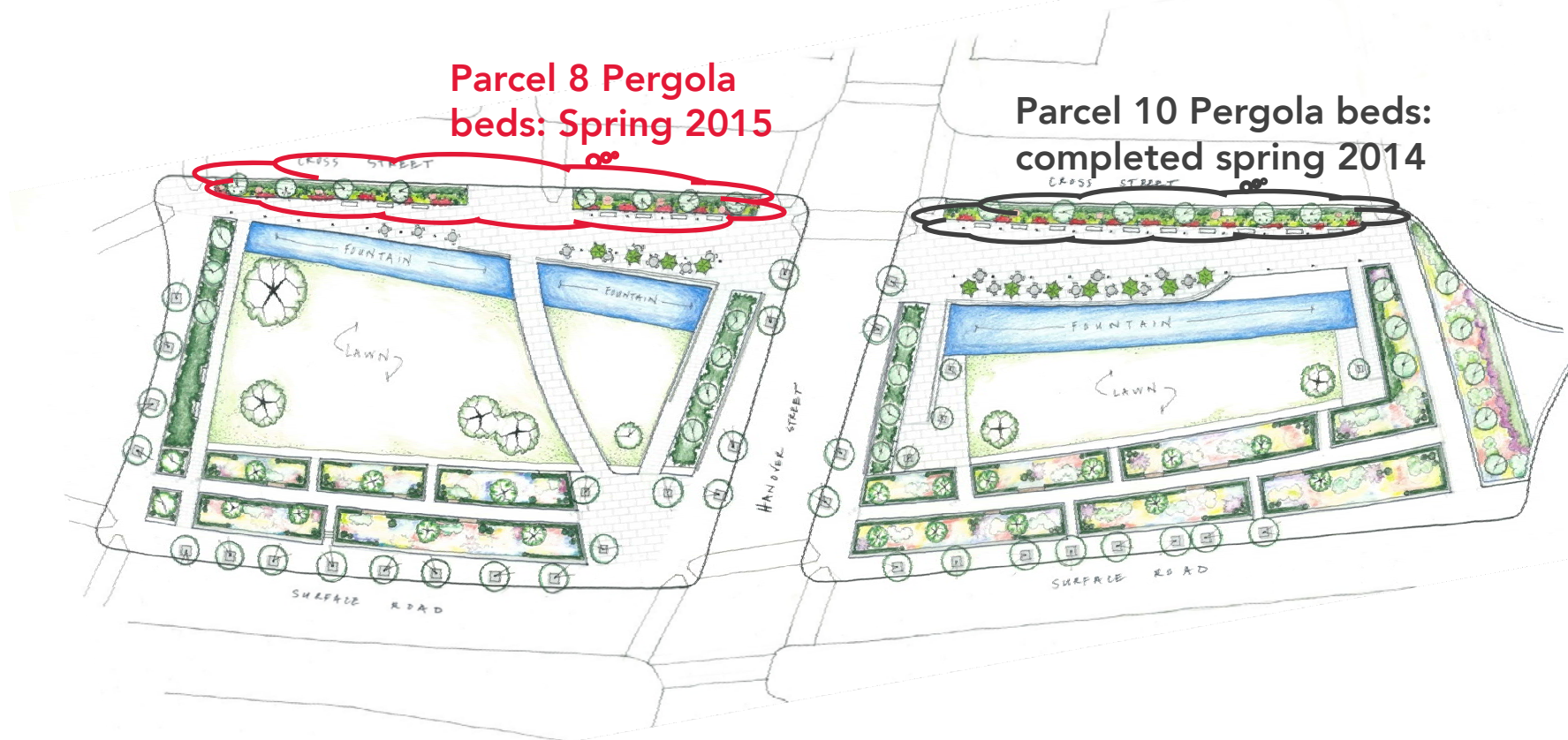


# Park Horticulture

Pergola Garden Beds

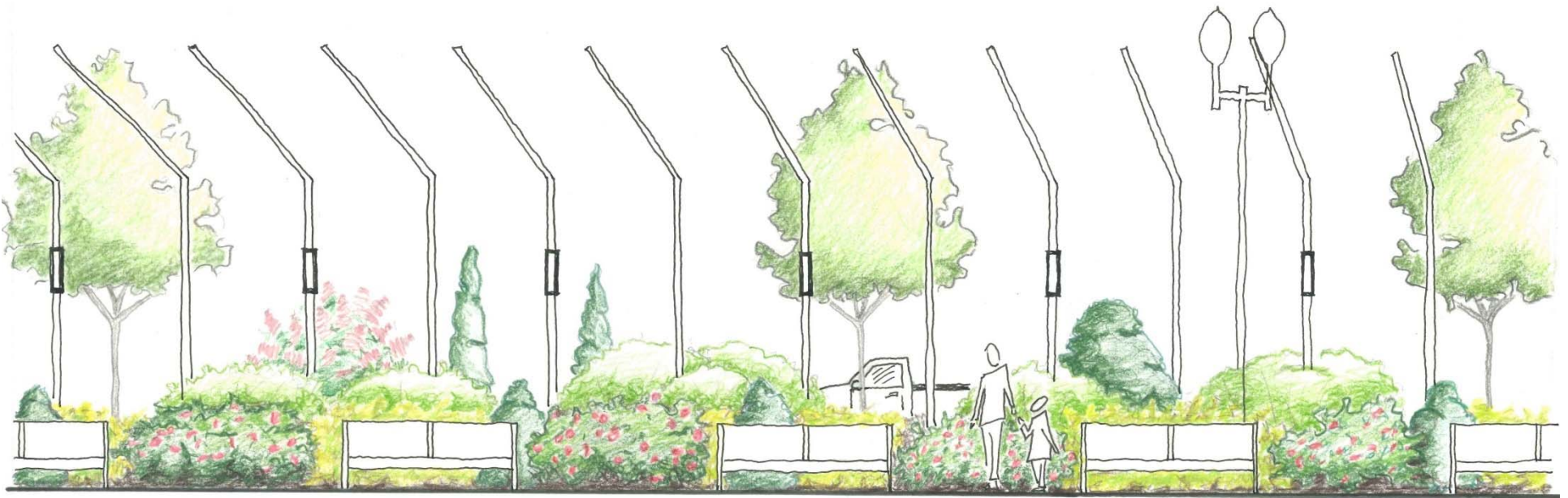
# Pergola Garden Beds

The Conservancy replanted the Parcel 10 Pergola beds in spring of 2014. We intend to replant the Parcel 8 Pergola beds in the same plant palette this spring.



# Pergola Planting Design Approach

- A. Retain street trees and evergreen junipers along street edge because they work
- B. Add more mid-height shrubs for diversity
- C. Insert punches of high color roses





## P10 Pergola Bed - before & after



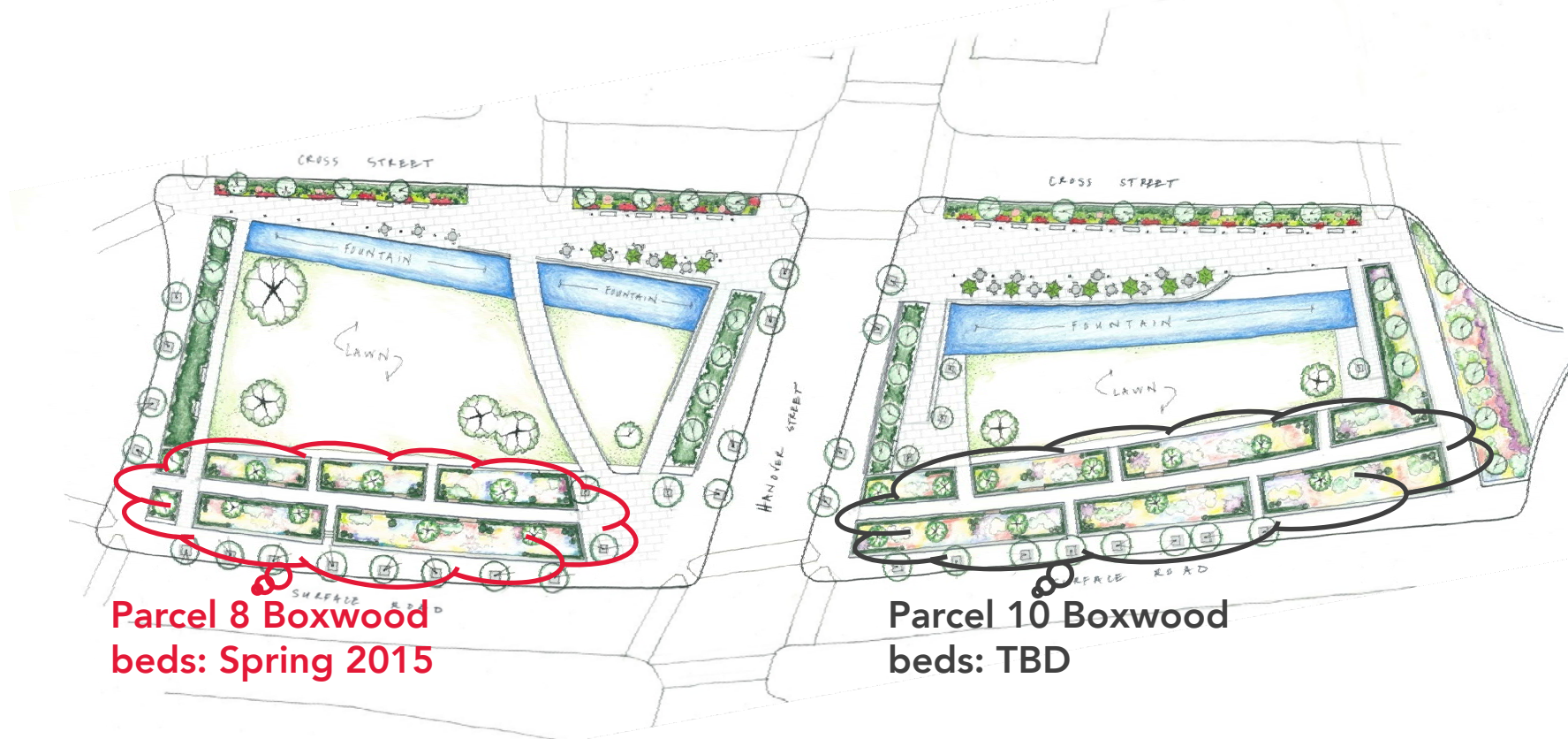
# Park Horticulture

Boxwood Gardens



# Boxwood Gardens

The Conservancy will renovate the Parcel 8 Boxwood Gardens this spring 2015. We continue to seek funds for the renovation of the Parcel 10 Boxwood Gardens.



# Boxwood Gardens Renovation **GOALS**



Create a healthy growing environment



Introduce plants with 4-season interest



Increase plant variety



Create more welcoming experiences



Nationally recognized landscape designer, **Lynden Miller**, supported our professional staff in the redesign of the Boxwood Gardens.



*New York Botanical Garden, New York City*



*Conservatory Garden, Central Park, New York City*



# Boxwood Gardens Renovation **APPROACH**

1. Work within strength of existing formal park design
2. Create/keep buffers from busy city surroundings
3. Create more welcoming experience
4. Increase vibrancy & 4-season interest





# Plant Palette for 4 SEASONS



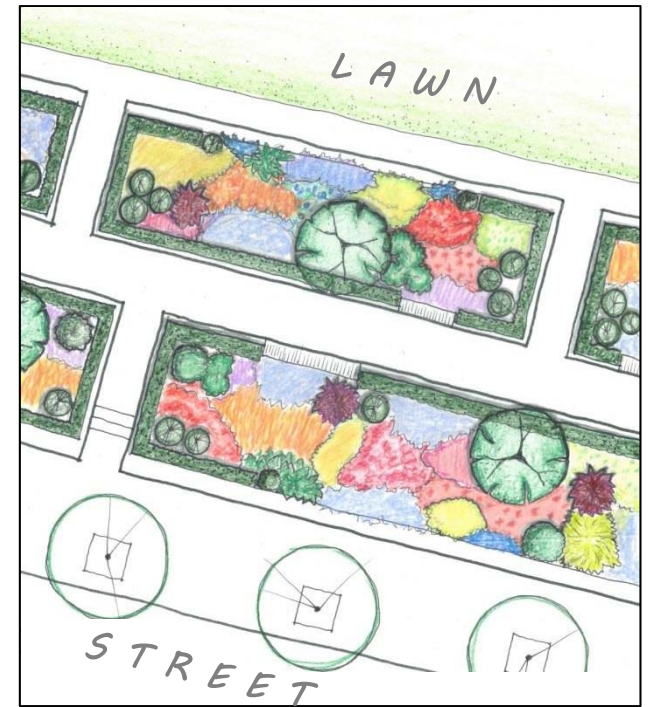
This collage features a diverse selection of plants, including:

- Evergreens: A tall, slender cypress tree, a dense green shrub, and a small blue spruce.
- Deciduous Shrubs: A large bush with bright red flowers, a bush with deep purple leaves, and a bush with yellow flowers.
- Flowering Plants: A large bush with pink flowers, a bush with white flowers, a bush with purple flowers, and a bush with yellow flowers.
- Grasses: A tall, thin grass with yellow flowers, a grass with orange flowers, and a grass with white flowers.
- Other Plants: A large bush with white flowers, a bush with purple flowers, a bush with yellow flowers, and a bush with orange flowers.



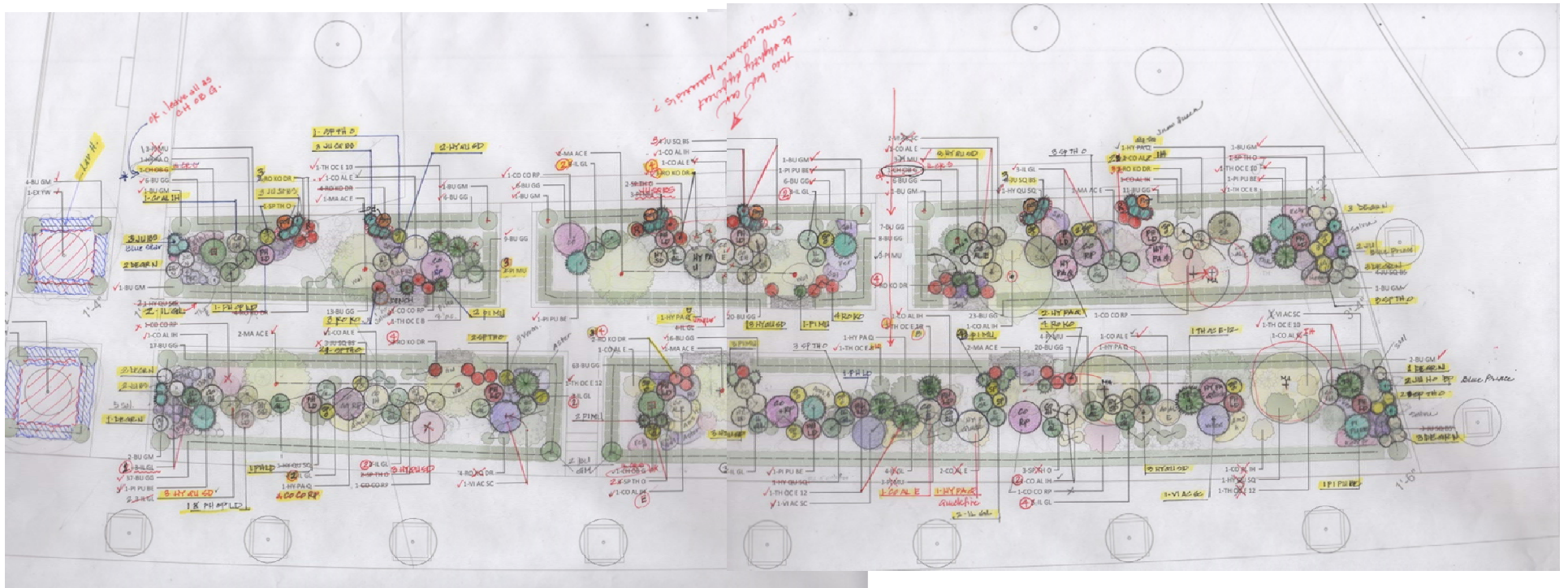
# Boxwood Gardens Renovation

## Design concept



# Boxwood Gardens Renovation

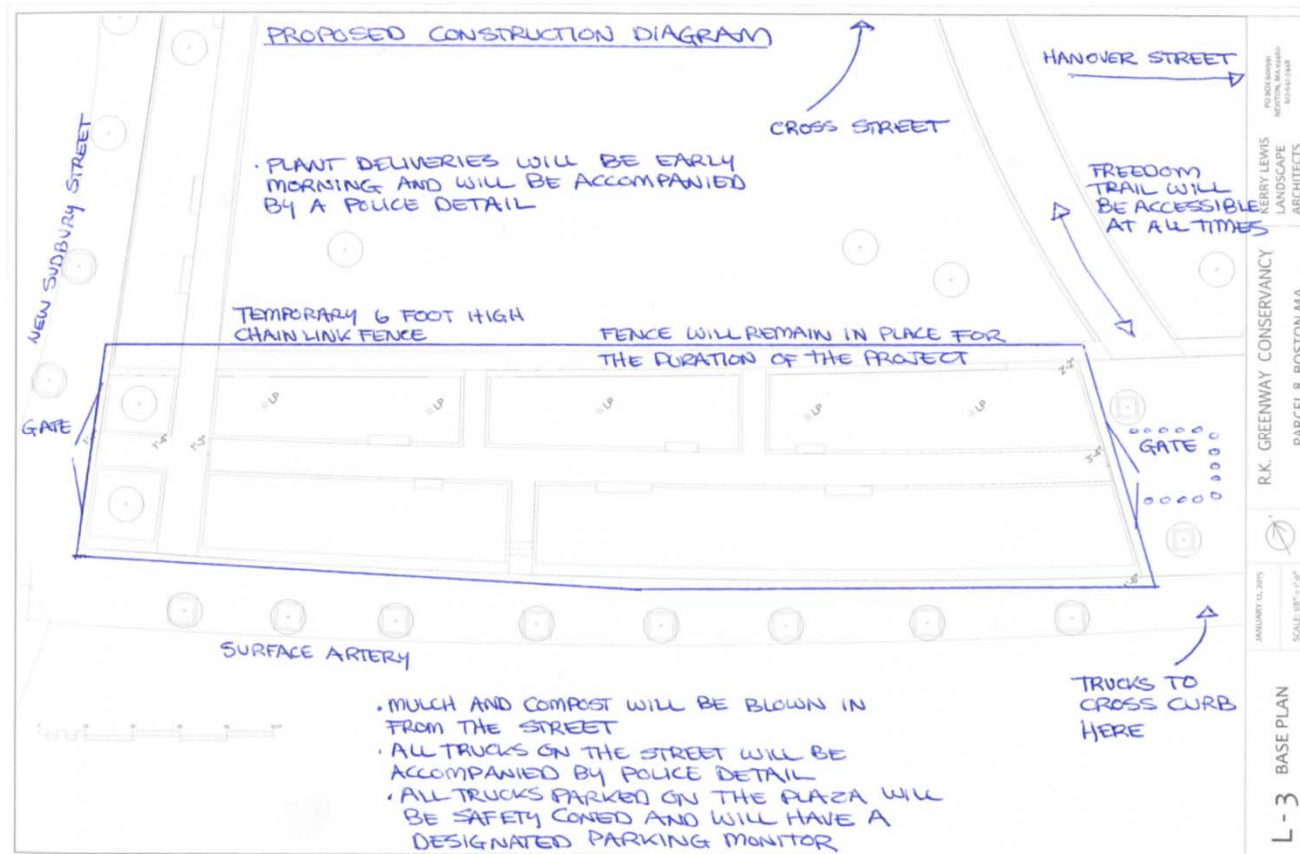
## Design refinement





# Landscape Contractor: A. Bonadio & Sons

Bonadio was chosen, among other reasons, for their light touch/precise approach to construction through the use of a conveyor belt system



# 2015 Installation Schedule

	APRIL	MAY	JUNE
Boxwood Gardens under renovation	Demo	Fallow period	Installation
Pergola beds under renovation			
Maintenance repairs			
Bench/swing installation			
Ribbon cutting!			

## North End Parks

# Spring 2015 improvements

### TOTAL BUDGET

\$400,000

#### *Planned:*

P8 boxwood gardens renovations	\$175,000	
Bench replacements	\$95,000	
Freedom Trail lighting repairs	\$20,000	
Pergola repairs	\$50,000	
Railing repairs	\$10,000	
Bollard lighting replacement		\$20,000
Fountain leak fix	\$30,000	

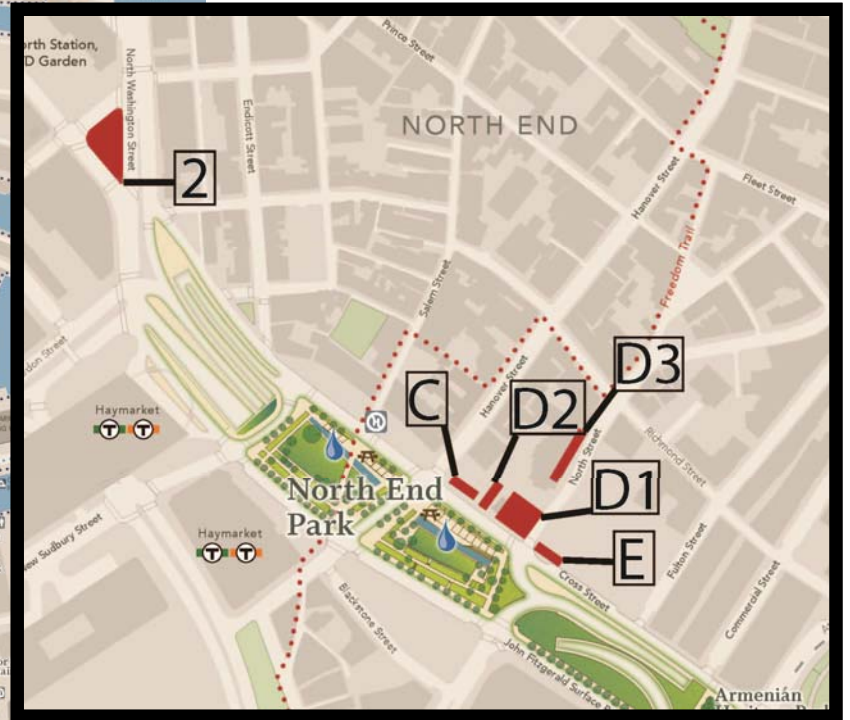
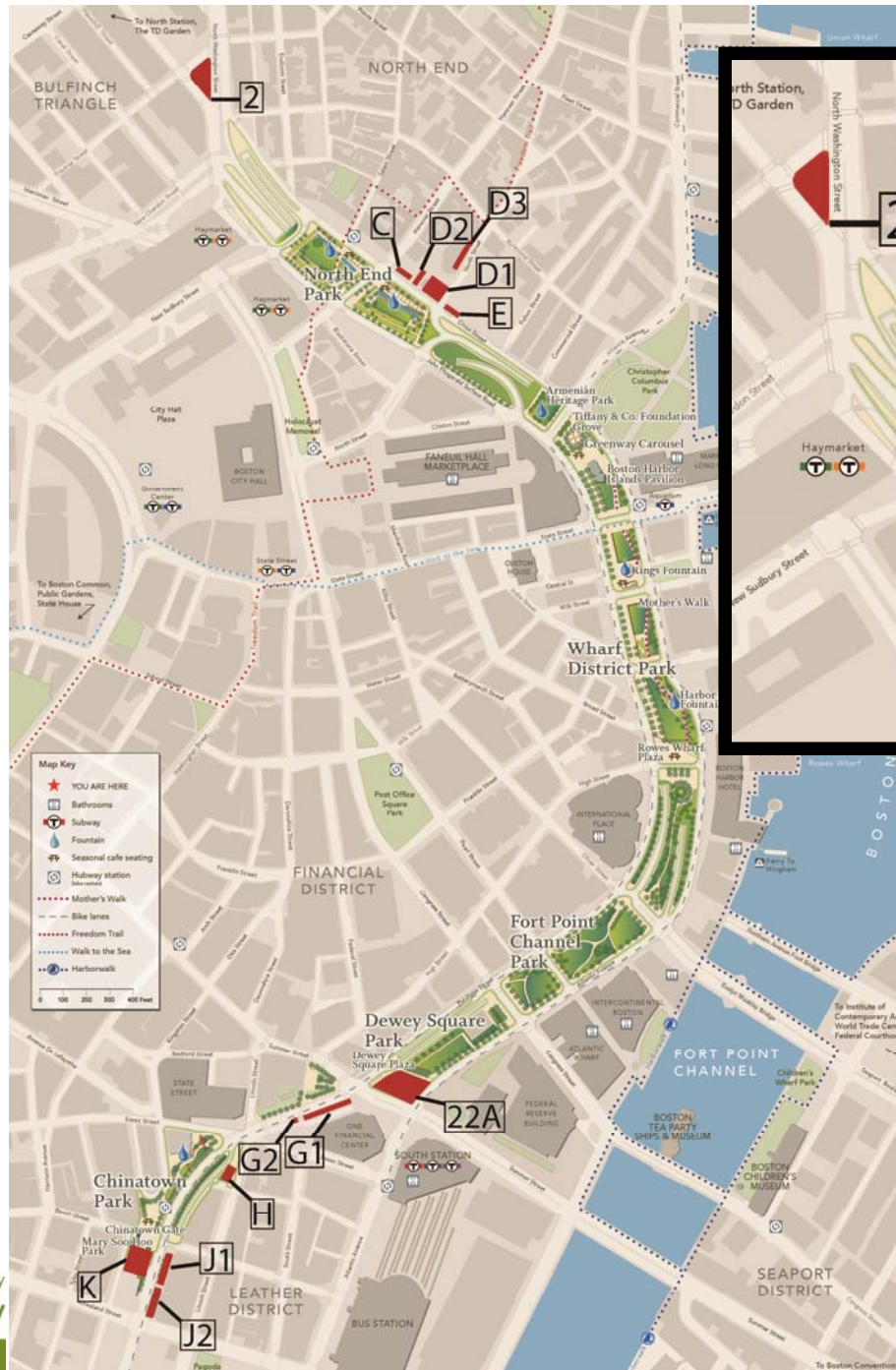
#### *Separate funding source:*

P8 Pergola Garden beds	\$20,000
------------------------	----------

#### *Future:*

Skate deterrents	\$45,000
Sidewalk slab repair	\$20,000
P10 Boxwood Gardens	\$200,000

# New Lease Parcels



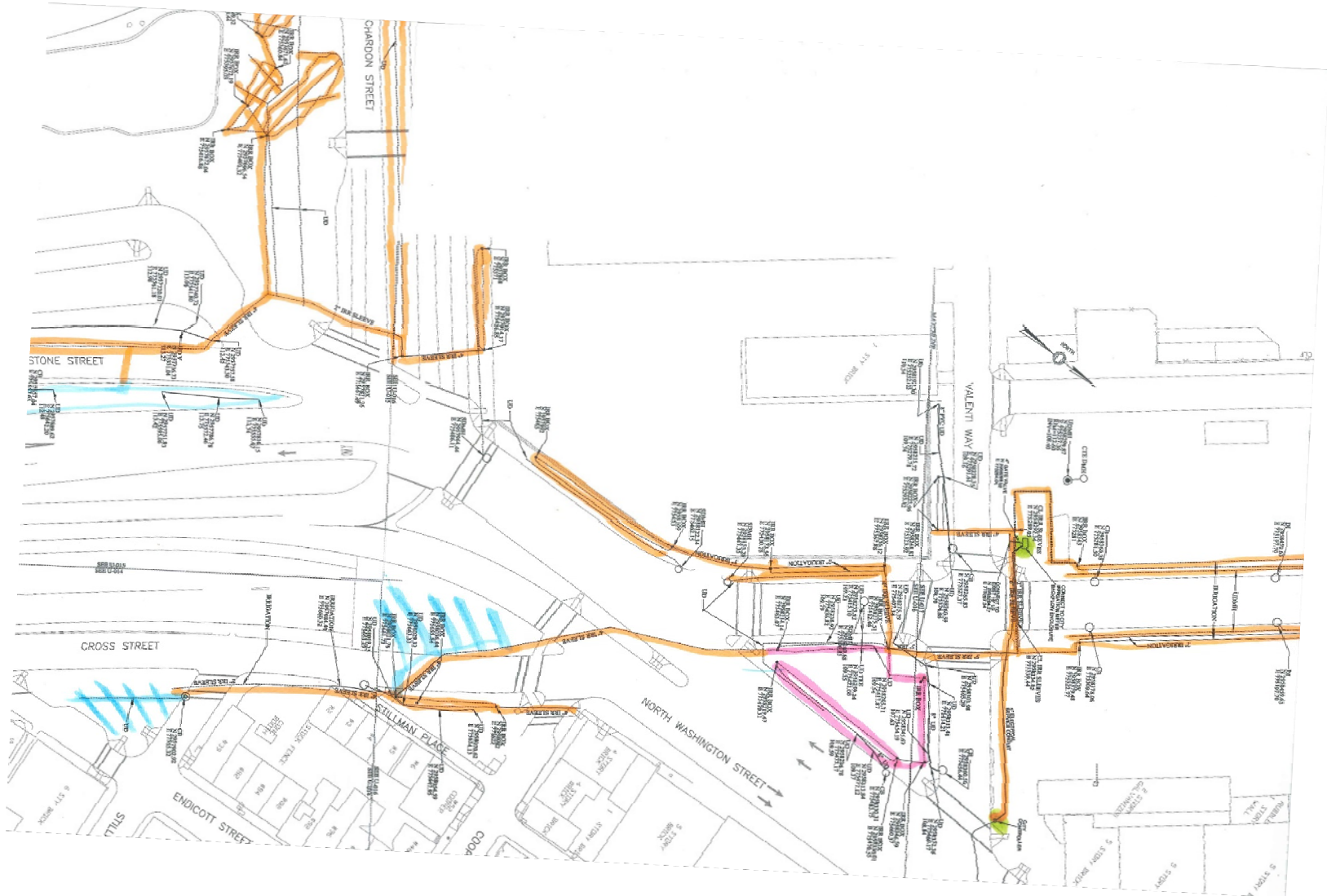


# First steps for restoration of 1.3 additional acres

1. Update/fix irrigation systems – rain sensors, soil moisture sensors, low-emission heads, remote accessibility
2. Restore soil health – soil testing, aeration, organic compost tea applications
3. Replace dead trees and prune for tree health



# Irrigation System





# Parcel 2





# Parcel D1





# Parcel E





# Programs



July/August: Berklee Greenway Concert Series





### CATEGORY: PLAY

ANGELASNAPPY

WWW.ANGELASNAPPY.COM



usson, 86, long jumper's  
ne, Italy

pet, 80-84 age division  
Italy



Athletes 85 and over, 55 meter sprint.  
Boston, Massachusetts

### CATEGORY: STREETS

VICTORIA CRAYTON

THOUGHTS ON ROMANCE FROM THE ROAD



Untitled III, Providence RI 2005



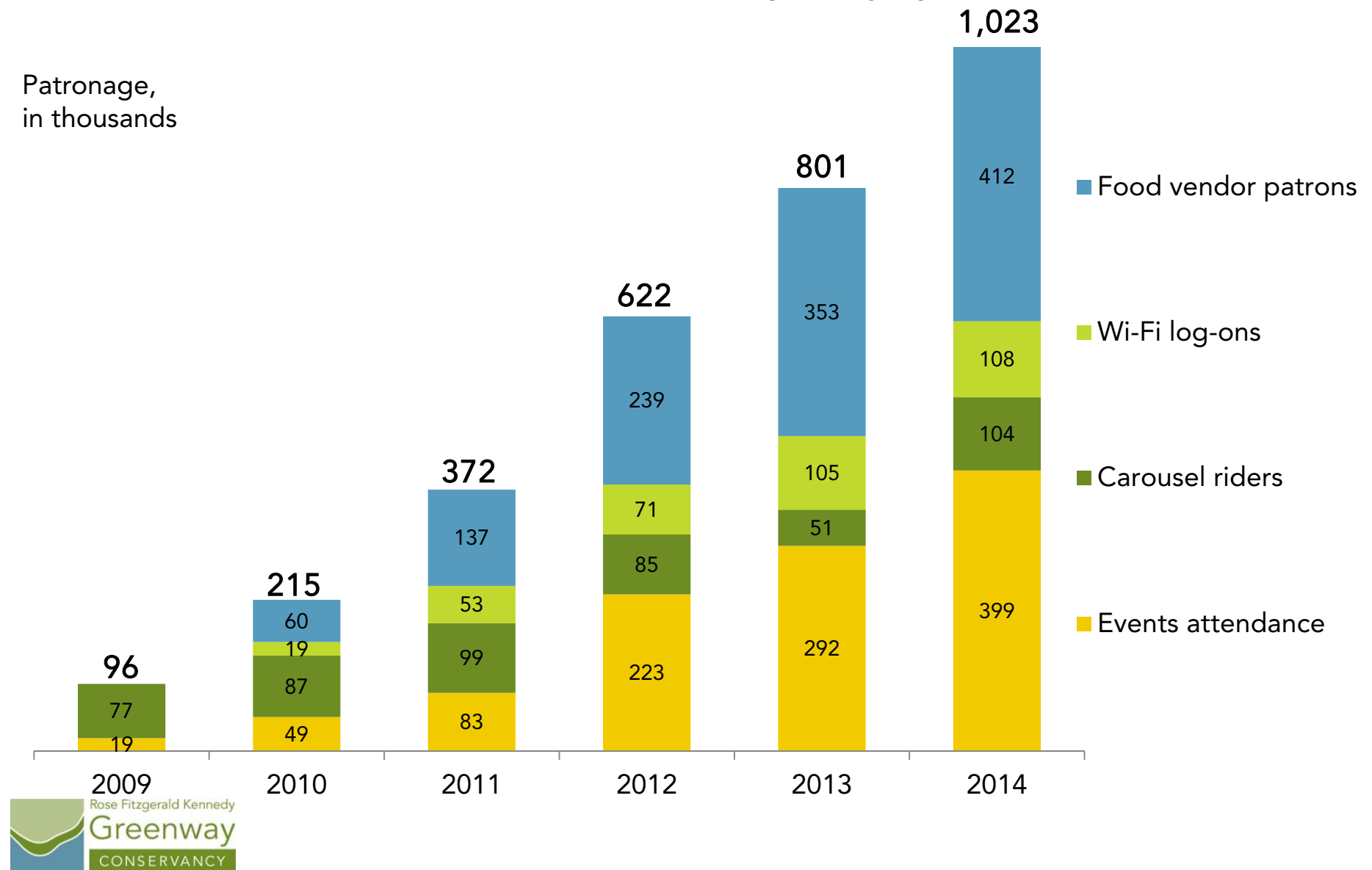
# Programming in the North End Parks

- Primary use is passive
  - Fountains, tables and chairs, relaxing on lawns
- 2014 – programmed uses included:
  - Free fitness classes (yoga, boot camps, others) – primarily on Northern park parcel
  - Berklee Concert Series (Fridays in July & August)
  - Some sampling
  - One food cart vendor
  - P12: The Fence (May-Oct) and Shipping Container Galleries
- 2015 – Proposed uses
  - Free fitness classes (balanced between two park parcels)
  - P12: The Fence (May-Oct) & Shipping Container Galleries
  - Community events (we can work with neighbors, groups)



# Conservancy offerings bring 1 million patrons, plus millions more who casually enjoy the park

Patronage,  
in thousands



# Questions?



# Appendix Slides



# Pergola Design Intent



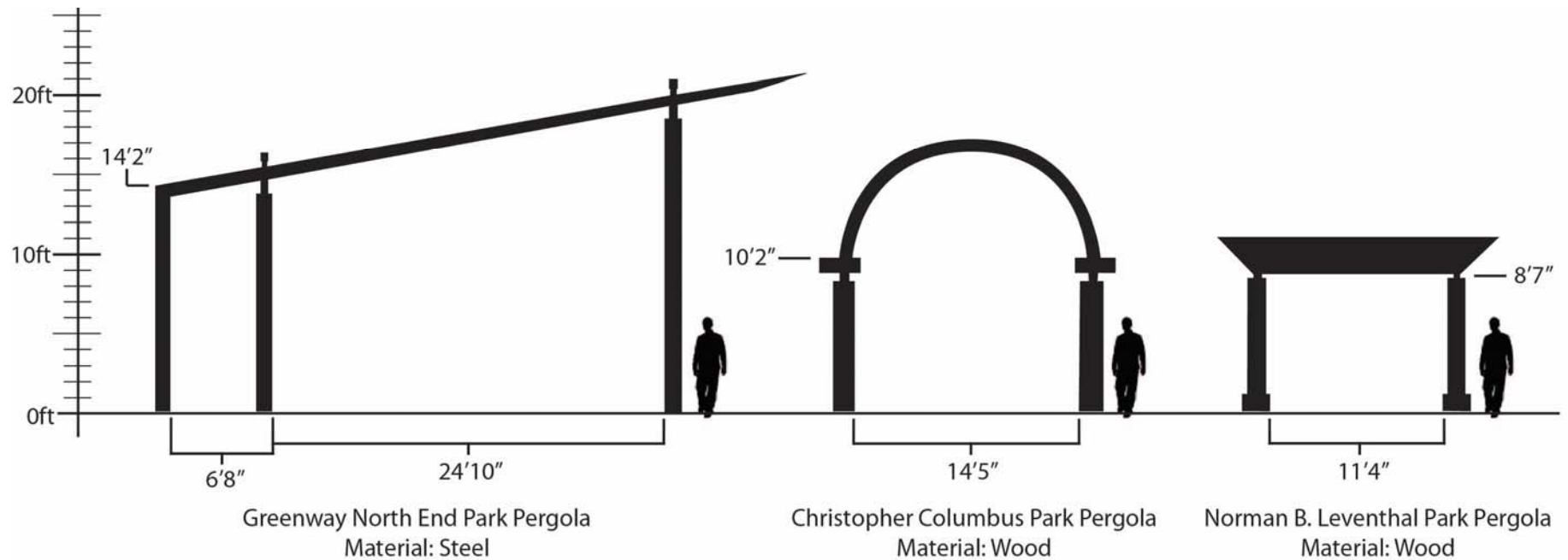
The pergola **WAS** designed to be:

- The “front porch” of the North End
- An over-sized architectural element that allows for transparency through to North End

The pergola **WAS NOT** designed to:

- Support vine growth across the top for shade

# Pergola Size Comparison



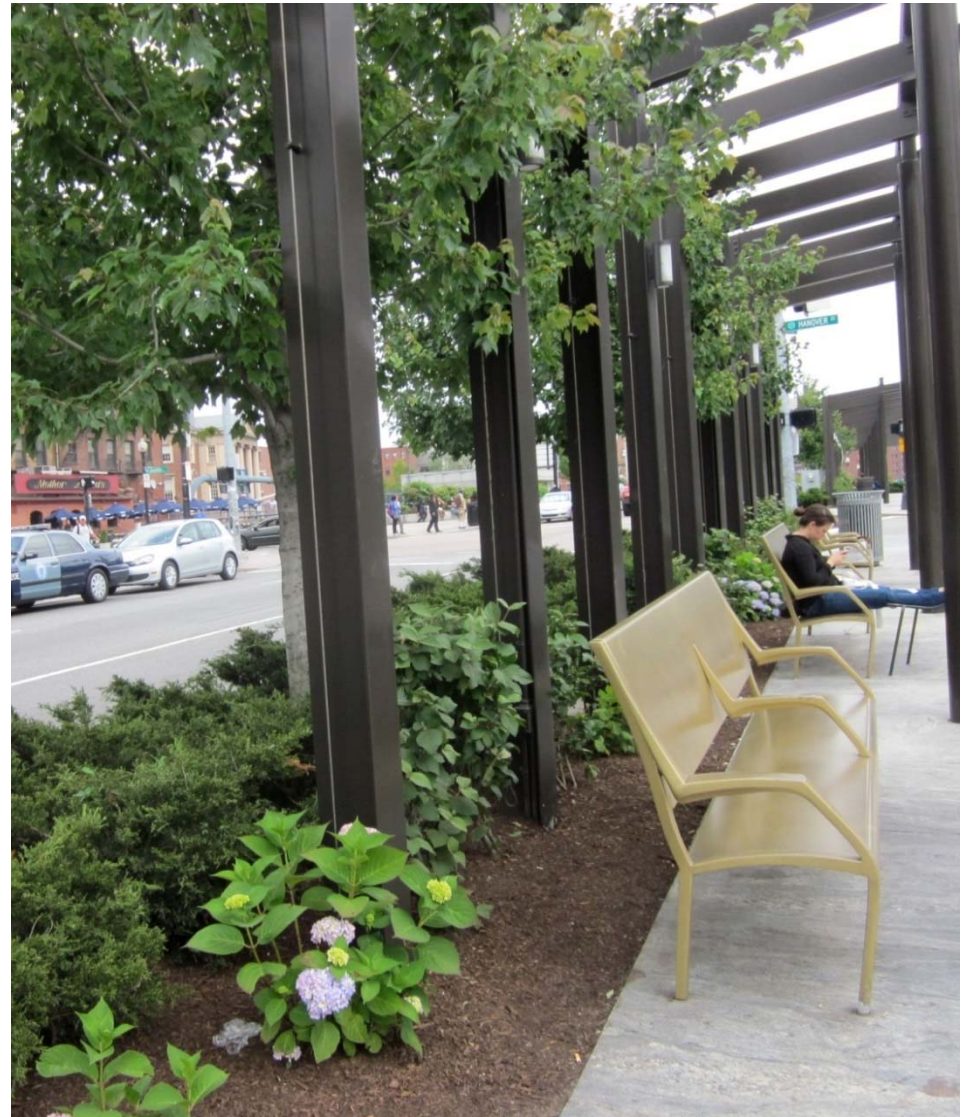


# Vines/trellis not recommended approach

- Wouldn't provide shade
- Vines will not grow up and over pergola
- Metal heats up, poor growing environment
- Armature system expensive
- Less necessary as tree canopy and new plantings fill in

## Recommended approach:

Add understory plantings of varying heights, textures and colors for year round interest and a more robust buffer to the street.





# More wood benches on boxwood bed seatwalls?

