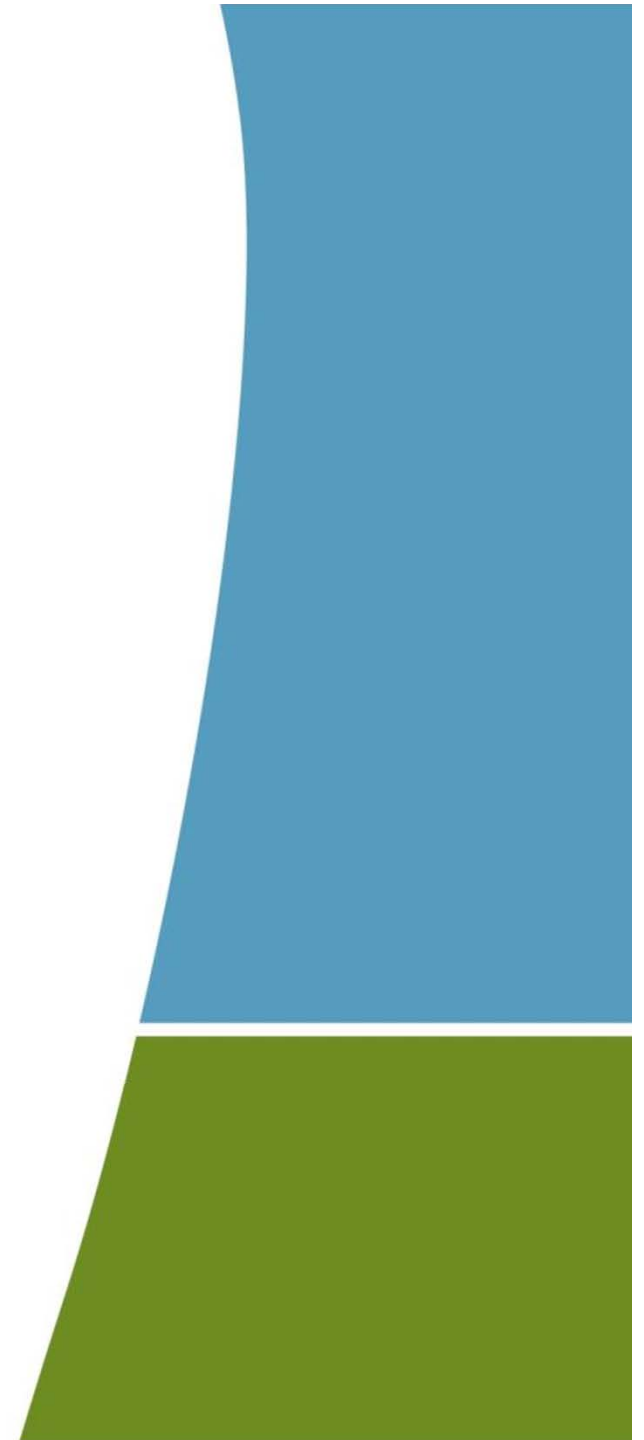


# Wharf District Parks Community Workshop

June 4, 2013







Welcome!



# Agenda for today

1. **Welcome & Overview of Workshop (5 mins)** – Jesse Brackenbury, Chief Operating Officer; Susanne Lavoie, Conservancy Board and Executive Director of the Wharf District Council; Justin Wyner, President of the Wharf District Council
2. **Current situation (30 mins)**
  - Maintenance, including fountains – Bob Stigberg, Superintendent of Maintenance and Security
  - Horticulture – Stu Shillaber, Superintendent of Horticulture
  - Programs – Charlie McCabe, Director of Programs
  - Park Uses – Linda Jonash, Director of Planning & Design
  - Development – Jodi Wolin, Director of Development
3. **Breakout Sessions (40 mins)**
  - Maintenance
  - Horticulture
  - Programs
  - Park Uses
4. **Recap of Breakout Sessions/Ideas/Feedback from Community/Public (10 mins)**
5. **Wrap up (5 mins)**

Remember this?







# Wharf District Parks

## Current Situation

1. Maintenance, including fountains – Bob Stigberg, Superintendent of Maintenance and Security
2. Horticulture – Stu Shillaber, Superintendent of Horticulture
3. Programs – Charlie McCabe, Director of Programs
4. Park Uses – Linda Jonash, Director of Planning & Design
5. Development – Jodi Wolin, Director of Development



# Park Maintenance

Robert Stigberg,  
*Superintendent of Maintenance*

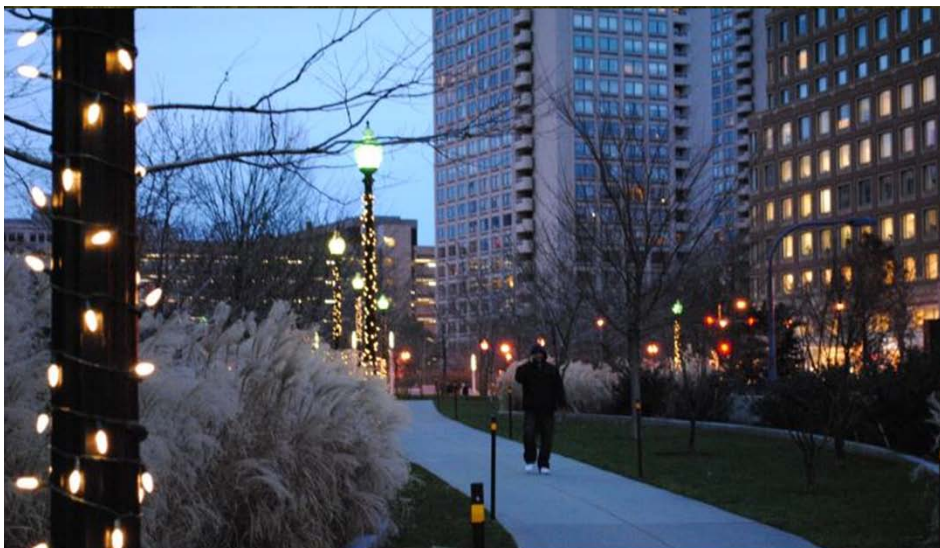


# Skateboarding





# Winter Lights



# Light Blade Repairs

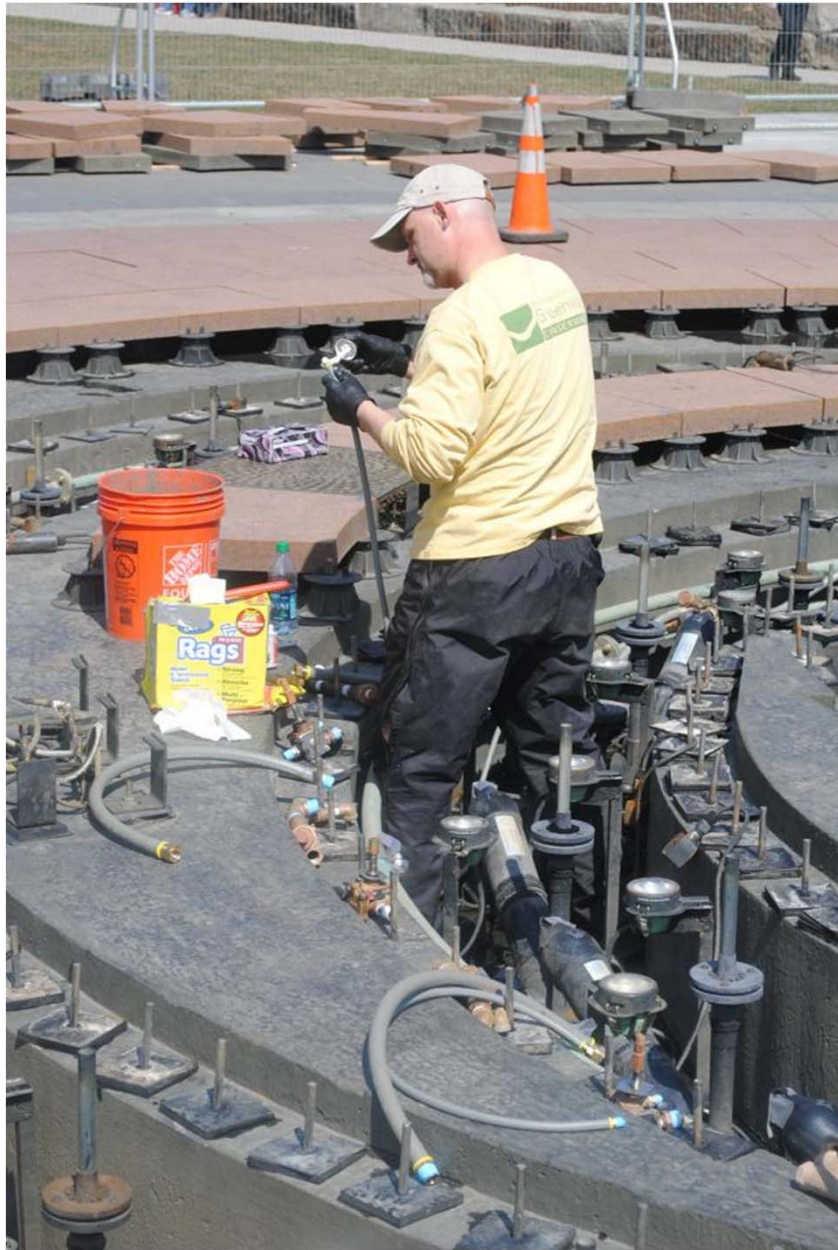




# Rings Fountain Repairs













# Horticulture

Stu Shillaber, *Superintendent of Horticulture*





# Organics



Vermiculture



Brewing



Compost tea application

Your parks, the **Greenway**  
ORGANIC LAWN + PLANT CARE

 Rose Fitzgerald Kennedy  
Greenway  
CONSERVANCY

[www.rfkgc.org/organics](http://www.rfkgc.org/organics)









# Lawn Care



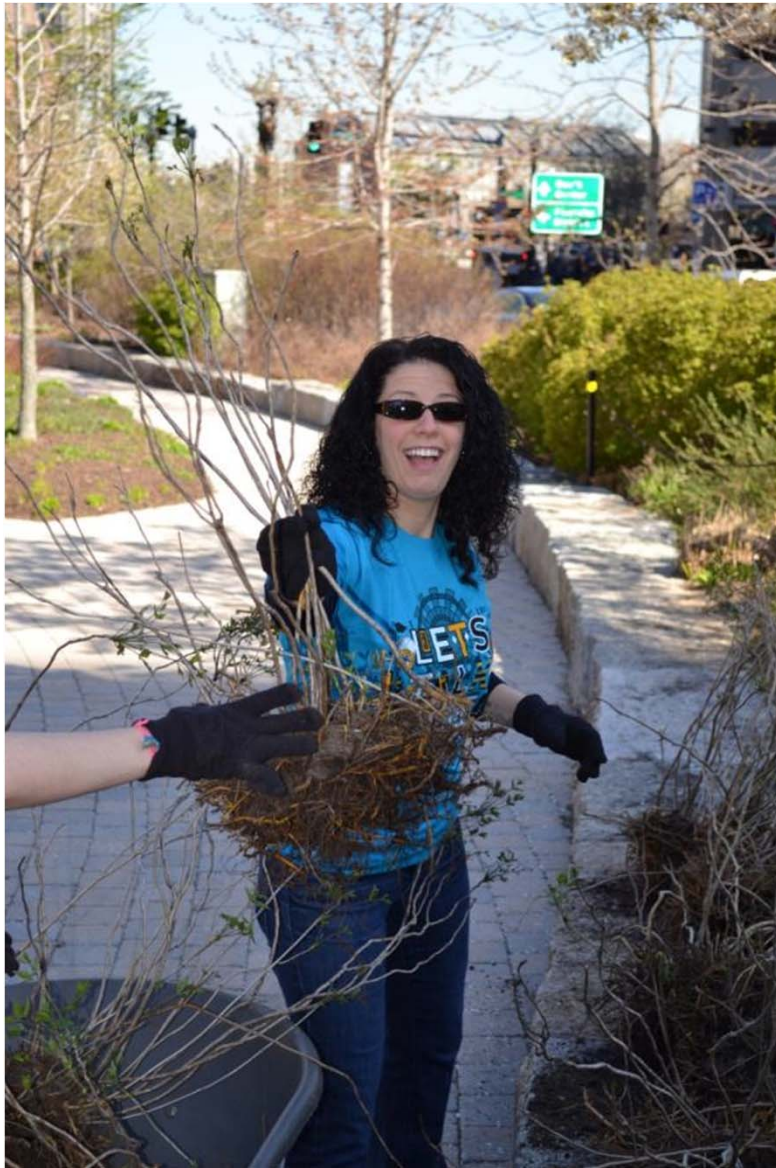


# Irrigation





# Volunteers





# Wharf Horticulture





# Seasonal Containers





# Rings Fountain east bed (p15) before renovation



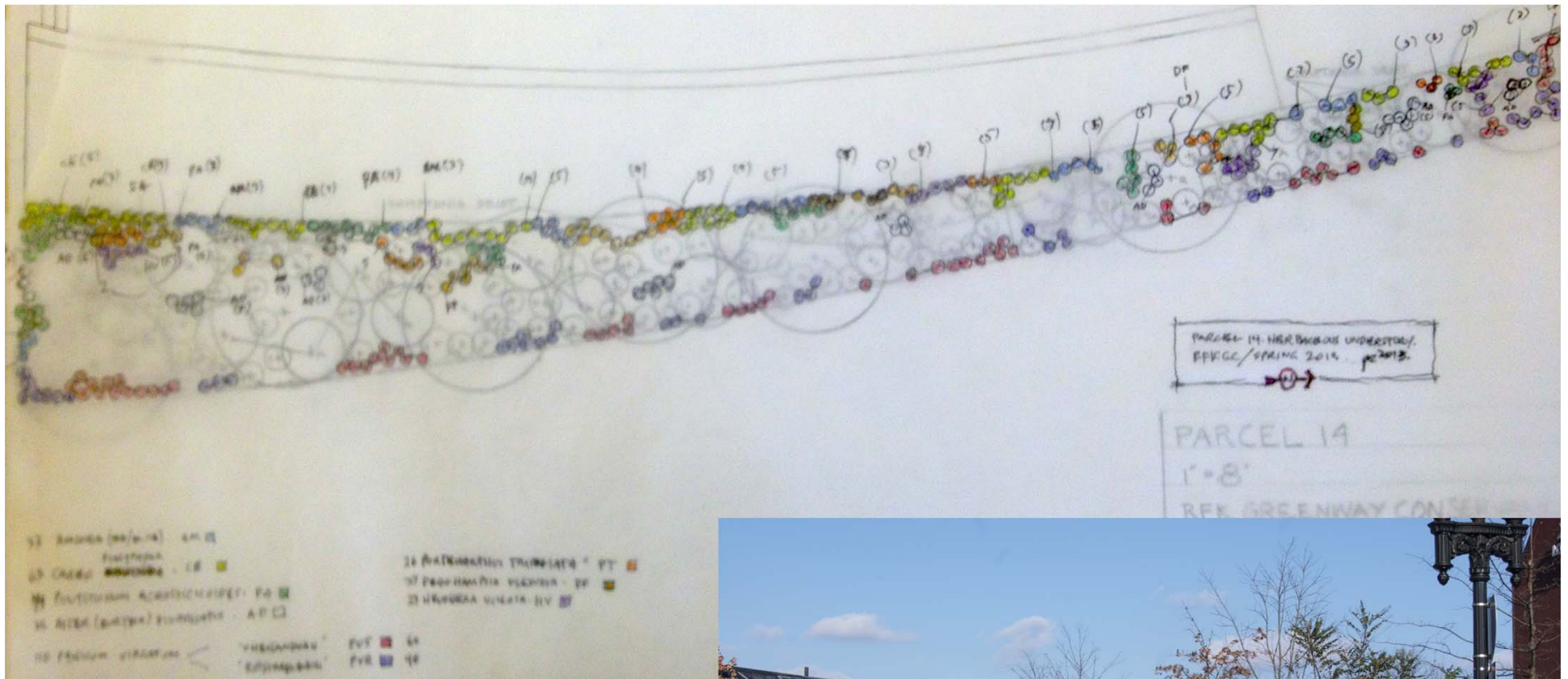


# Rings Fountain east bed (p15) after renovation



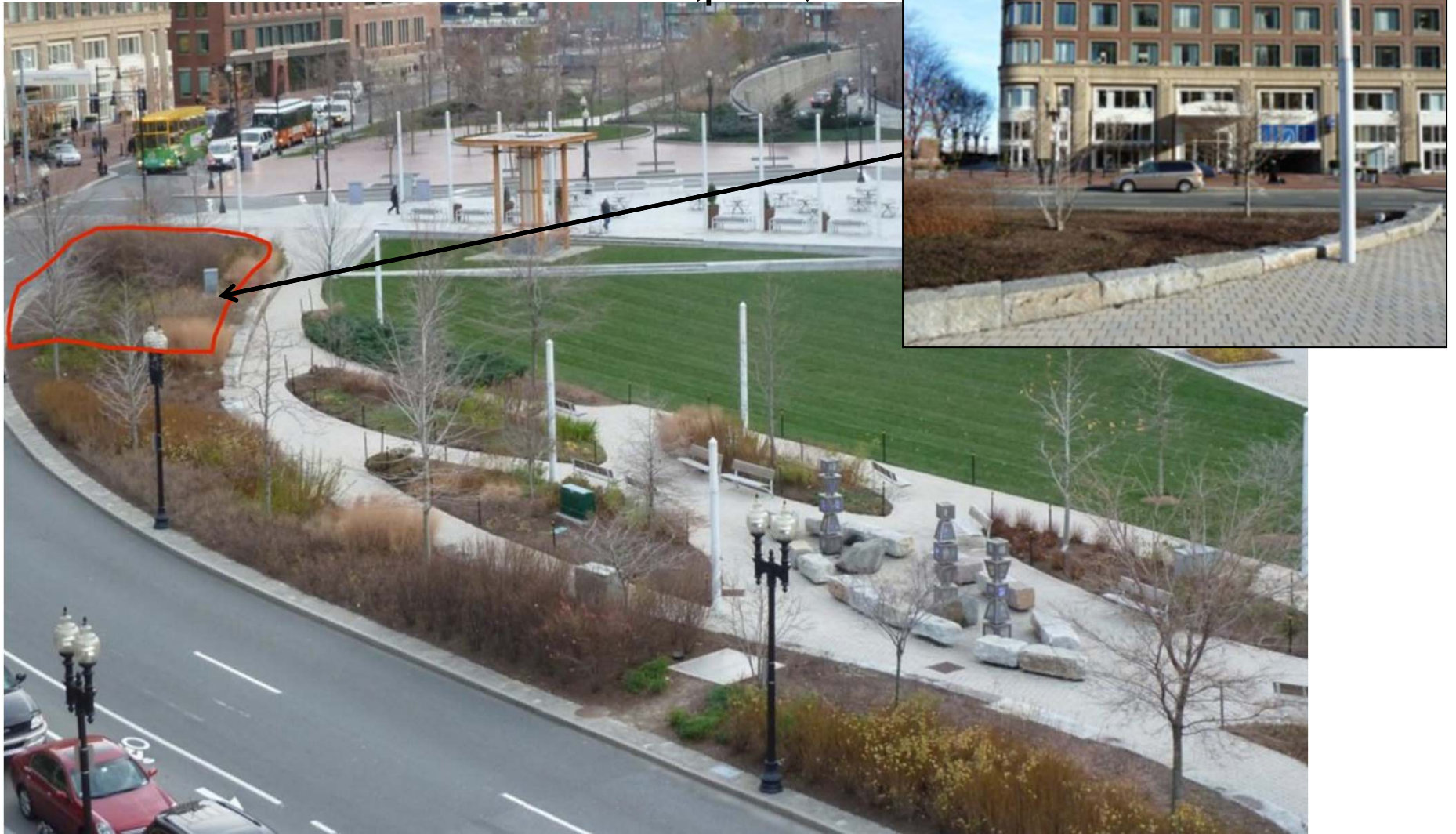


# Improvements occurring early this month: East bed, near Harbor Island Pavilion (p14)



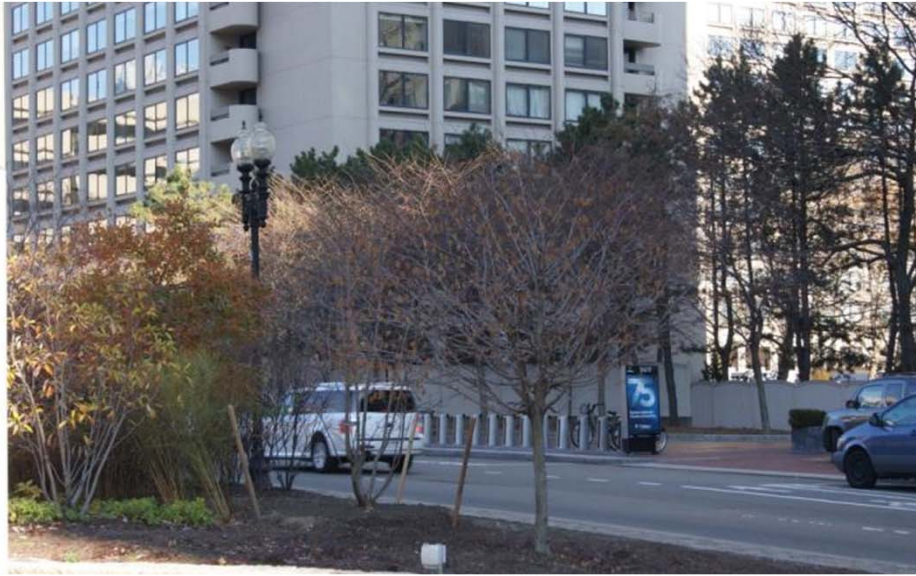


Improvements occurring early this month,  
southern end of east bed (p17)



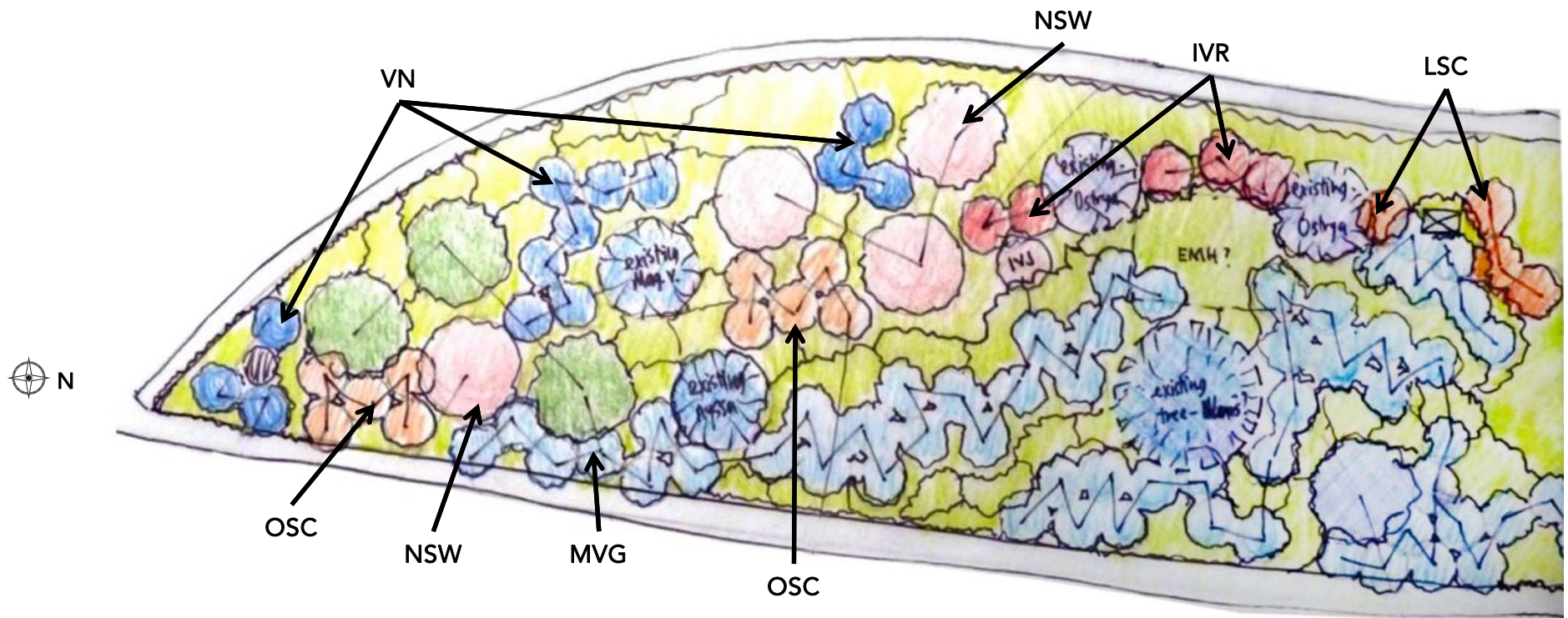


# Work underway on southern end of east bed (p17)





# Southern end of east bed (P17): New Plants & Layout





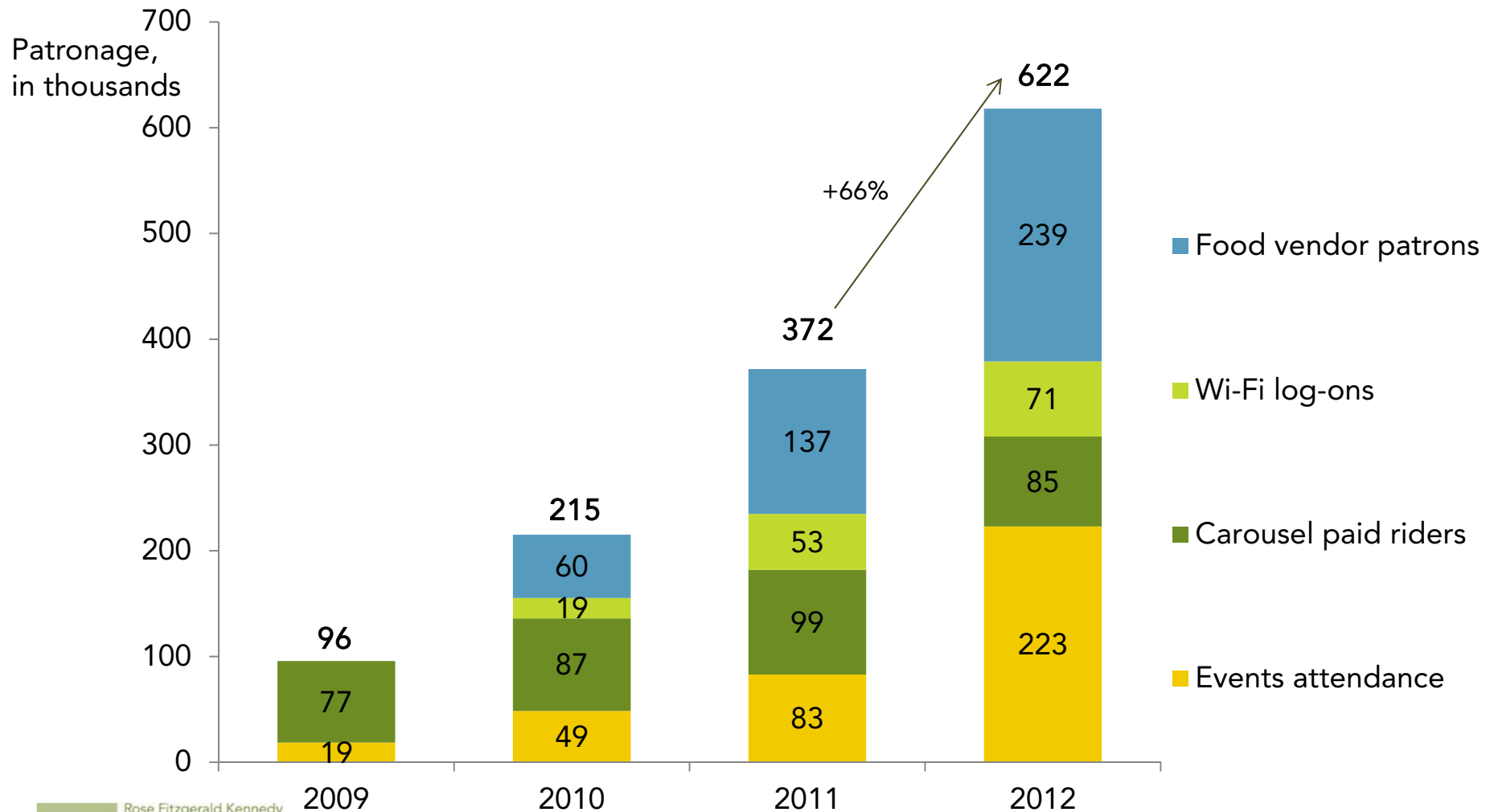
# Public Programs

*Charlie McCabe, Director of Public Programs*





Millions of casual visitors plus 600,000+ patrons for programs, Wi-Fi, food trucks, and more





# Public Programs – Greenway Mobile Eats





# Public Programs

## Wharf District – 2013 Anticipated Events

- Yoga Classes – Summer
- Greenway Open Market – Saturdays – May 25 thru October
- Berklee Greenway Sessions – Summer
- Kids Activities and Lawn Games – Summer
- FIGMENT – July 27-28 (Rowe's Wharf to Dewey Square)
- Carousel Grand Opening – August 31<sup>st</sup>
- Carousel Community Day – Fall
- Carousel Evenings – in conjunction with Christopher Columbus Lights - October
- Winter Lights - possible joint programming with North End, Faneuil Hall Marketplace - November





Give us feedback





# Park Uses

Linda Jonash, *Director of Planning and Design*



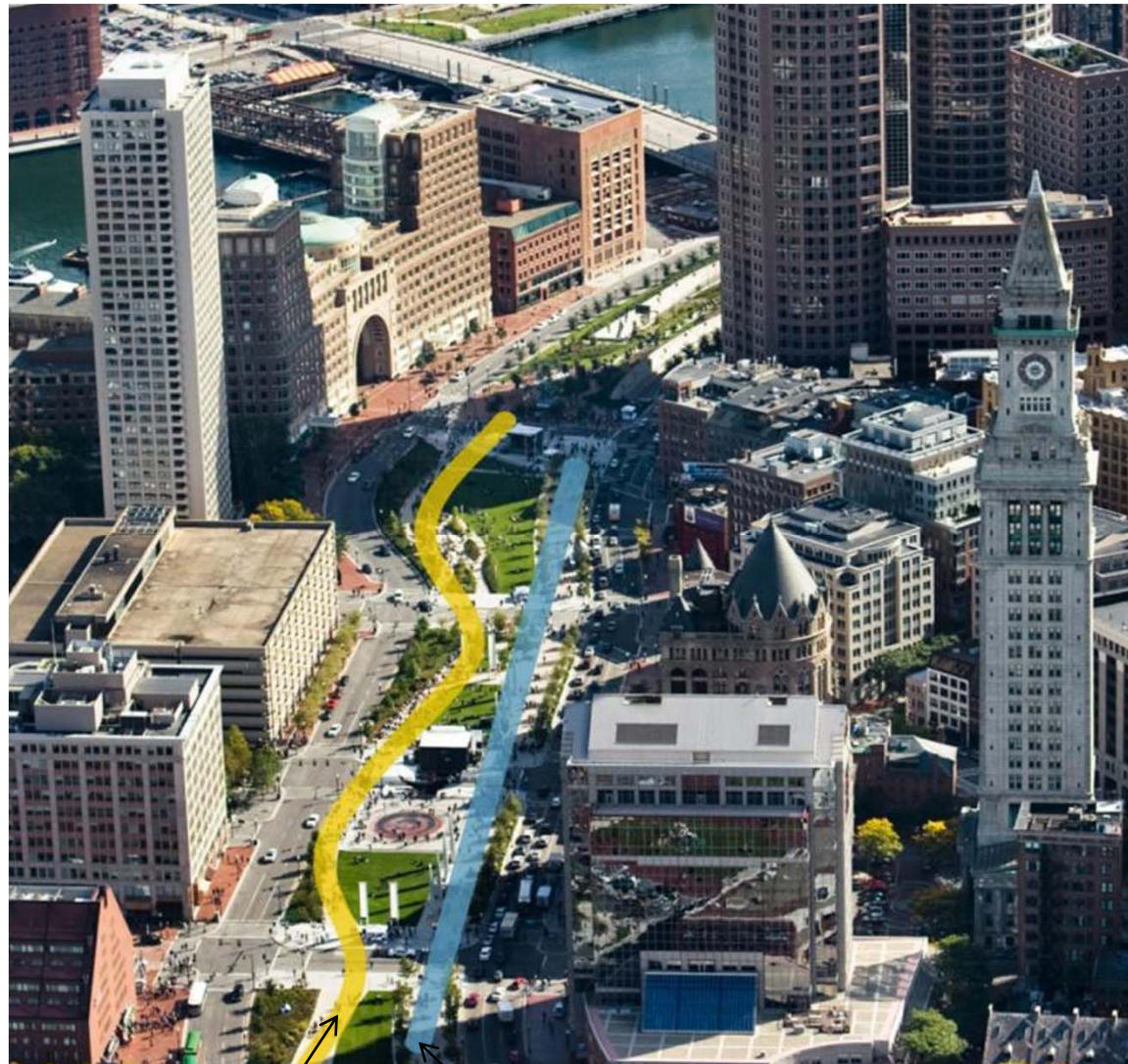


# Wharf District Parks





# Existing Conditions





# The Greenway Carousel





# The Greenway Carousel





# Furniture



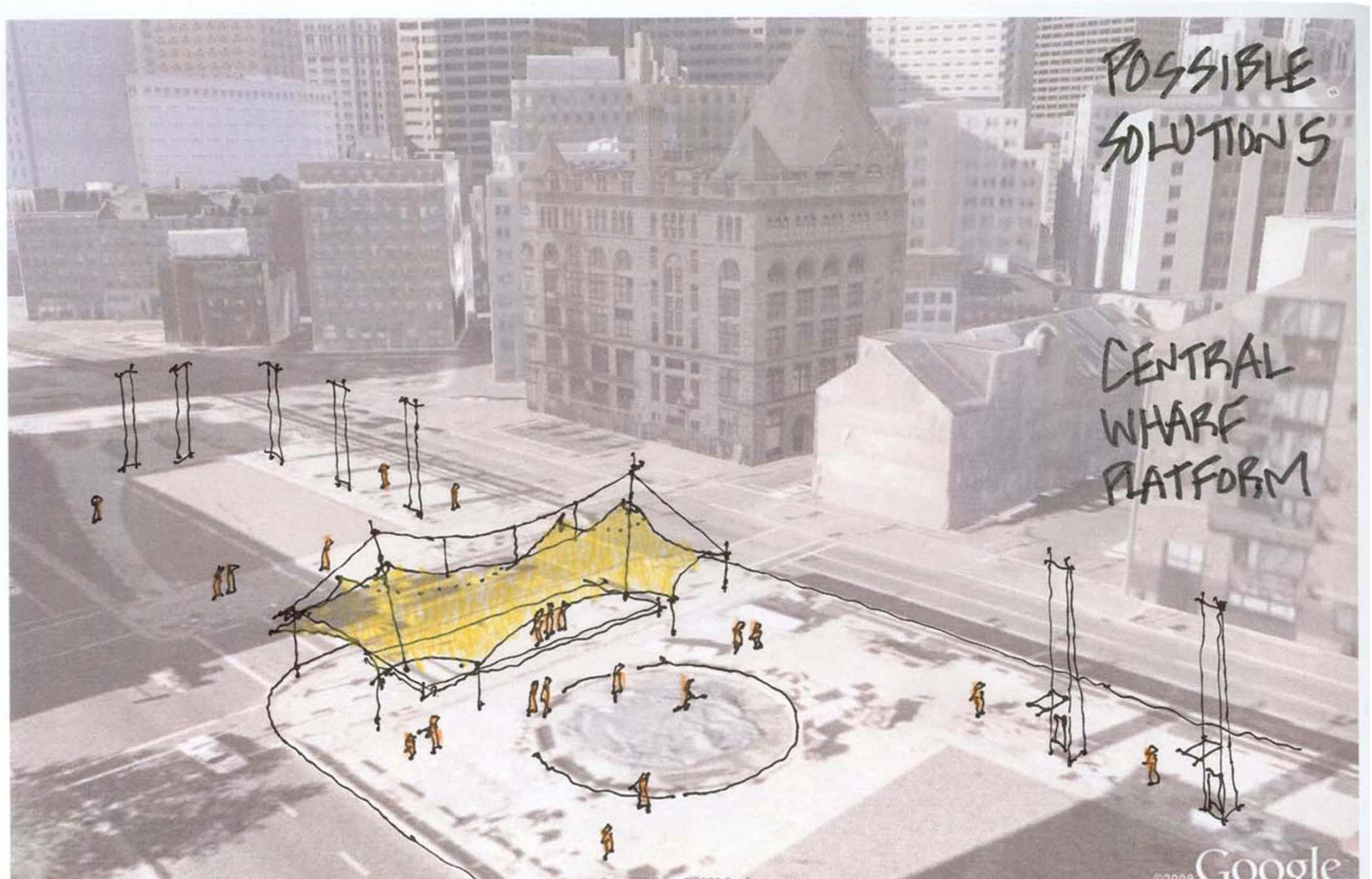


# Promenade





# Ideas - shade pavilion at Rings Fountain





# Development

Jodi Wolin, *Director of Development*







# Become a Member!

Join the Rose F. Kennedy Greenway Conservancy

Boston's newest public green space wouldn't exist without generous supporters who appreciate the Greenway and want it to thrive. We invite you to join their ranks by becoming a member of the Greenway Conservancy. You will also receive special benefits to acknowledge your membership!

Most importantly, your membership means that you can take personal pride in knowing that you sustain the Greenway. Your participation will provide essential support as we continue to advance initiatives such as organic horticulture, hundreds of free public programs, and much more! If you are interested membership, fill out and return the form below or sign up online at [www.rfkgc.org/donate](http://www.rfkgc.org/donate).



## MEMBERSHIP LEVELS & BENEFITS

### \$60 Green Link

- Invitations to Greenway social events throughout the year, including the Annual Members' Volunteer Day followed by a picnic on the Greenway
- Discounted parking at select garages around the Greenway
- Greenway tote

### \$120 Green Family

- All of the above plus:
- Family pack of 15 carousel tickets
- Advanced notice and preferred access to urban gardening classes with the Greenway's horticulture professionals and seasonal Greenway tours

### \$250 Green Thumb

- All of the above plus:
- Invitation to Greenway food vendor tasting tour at the start of the summer season
- Pack of colorful greeting cards featuring Greenway horticulture

### \$500 Green Giver

- All of the above plus:
- VIP receptions at Greenway events

### Green Circle



Membership in the Greenway Circle is reserved for members who make annual gifts of \$1,000 or more. As a member of the Greenway Circle, you will join a select group of visionary leaders who sustain the Greenway and secure its future. For more information call Jodi Wolin, Director of Development, at 617-603-7727 or email at [jwolin@rfkgc.org](mailto:jwolin@rfkgc.org)

### Stay Connected!



@hellogreenway



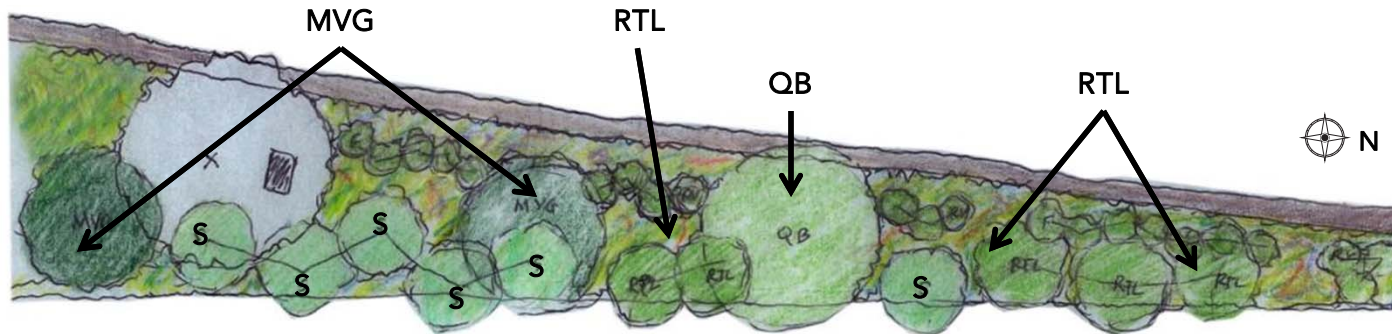
[facebook.com/rosekennedygreenway](https://facebook.com/rosekennedygreenway)



The Rose Kennedy Greenway Conservancy, a private 501(c)3 organization, is the designated steward of the Rose Kennedy Greenway, a new ribbon of contemporary urban parks in the heart of Boston. We are delivering on the promise of a vibrant, beautiful and innovative city park.



We need your support!  
(For example: Harborside bed improvements)



Trees & Shrubs (shown right)



### Perennial Mix

*Panicum virgatum*, *Sporobolus heterolepis*, *Sorghastrum nutans*, *Vernonia glauca*, *Amsonia* 'Blue Ice,' *Amsonia hubrichtii*, *Heuchera villosa*, *Baptisia alba* 'Purple Smoke,' *Liatris aspera*, *Porteranthus trifolius*, *Liatris spicata* w/*Allium*, *Solidago ohioensis* (selection shown below)



MVG:  
*Magnolia virginiana*  
"Green Shadow"



S: *Sassafras albidum*



RTL:  
*Rhus typhina* 'Laciniata'



QR: *Quercus bicolor*



# Breakouts

1. Maintenance – Bob
2. Horticulture – Stu
3. Programs – Charlie
4. Park Uses – Linda



# Recap of Breakout Sessions/Ideas/Feedback from Community/Public

1. Maintenance – Bob
2. Horticulture – Stu
3. Programs – Charlie
4. Park Uses – Linda



## *Get more involved!*

Stay in  
touch



Email [info@rfkgc.org](mailto:info@rfkgc.org) with your thoughts



Follow @hellogreenway



Like us: [facebook.com/rosekennedygreenway](https://facebook.com/rosekennedygreenway)

Volunteer

- Dozens of scheduled chances to help plant, weed, etc.
- [www.rfkgc.org/get-involved/volunteer/](http://www.rfkgc.org/get-involved/volunteer/)

Donate

- [rfkgc.org/donate](http://rfkgc.org/donate)
- Become a member
- Buy a Mothers Walk paver

