



## **Answers to Rodent RFP Questions**

1. Can you provide a map of greenway parcels with labels?  
Please see attached.

2. Can you provide a map and/or number of current bait station locations throughout the park?

We currently own approximately 85 stations in total. These have been located as follows:

- 39 stations in the North End Parks, North of Armenian Heritage Park to Anthony 'RIP' Valenti Way,
- 7 in Armenian Heritage Park,
- 13 between Oliver and Mercantile Street,
- 12 between Oliver and Summer Street,
- 14 in Chin Park.

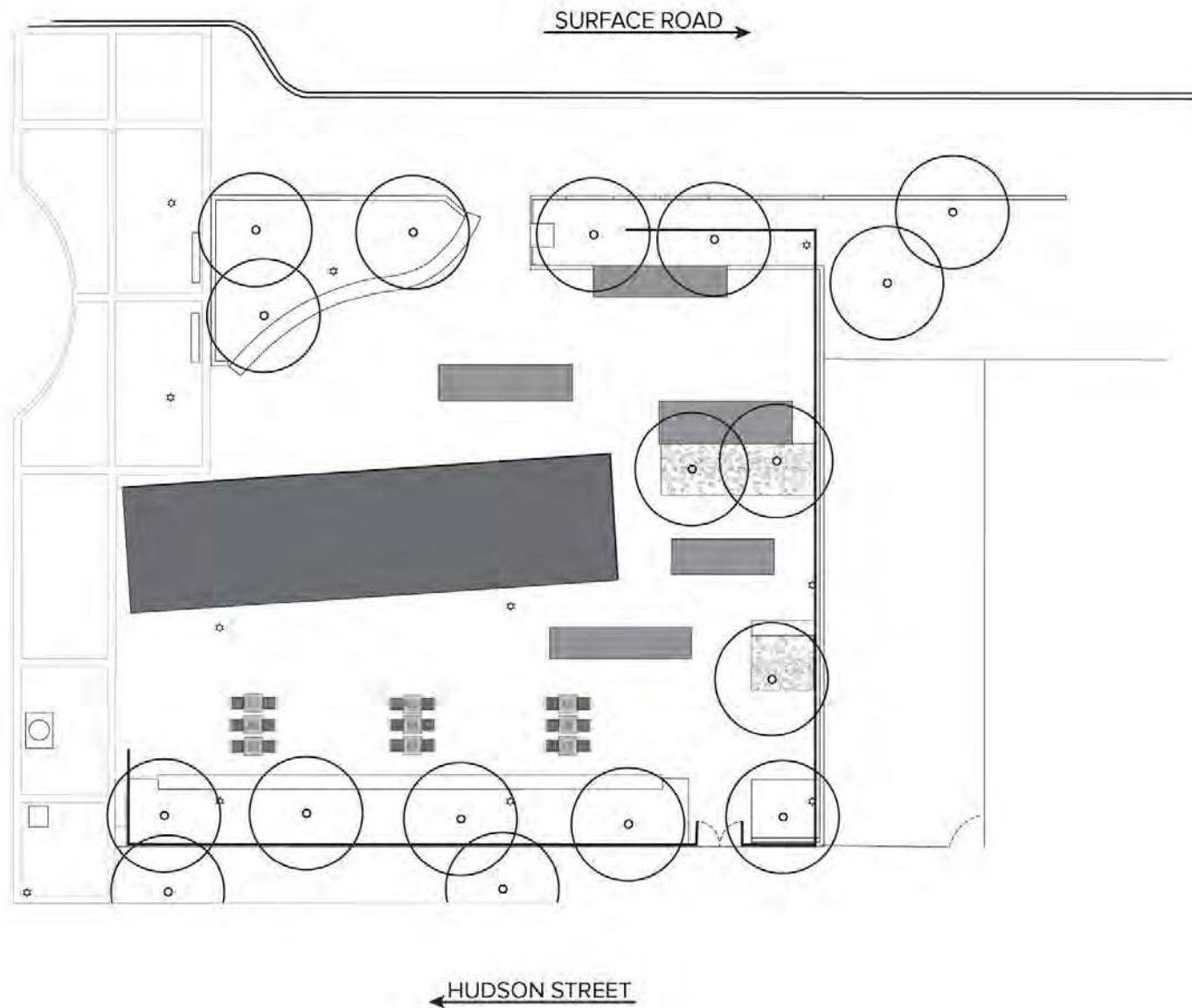
3. Is a veteran owned business given additional consideration for being a minority owned business as stated in the RFP?

We consider the combined qualities of each Contractor and Proposal to determine the Best Value for the Conservancy. Please identify if your company is a certified small, diverse or disadvantaged business including, but not limited to, WBE, MBE, SBE, VBE.

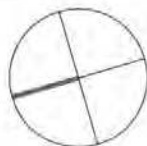
4. What is our budget/what did you spend last year?

In a typical year, we have spent between \$15K-\$20K on rodent control services, inclusive of fumigation or other specialty services on an as-requested basis. We ask that each company utilize their expertise to produce a proposal and program which will best fulfill our expectations as outlined in the RFP. As stated above, we consider the combined qualities of each contractor to determine best value.





**THE  
GREEN  
WAY**



DATE:

SCALE:

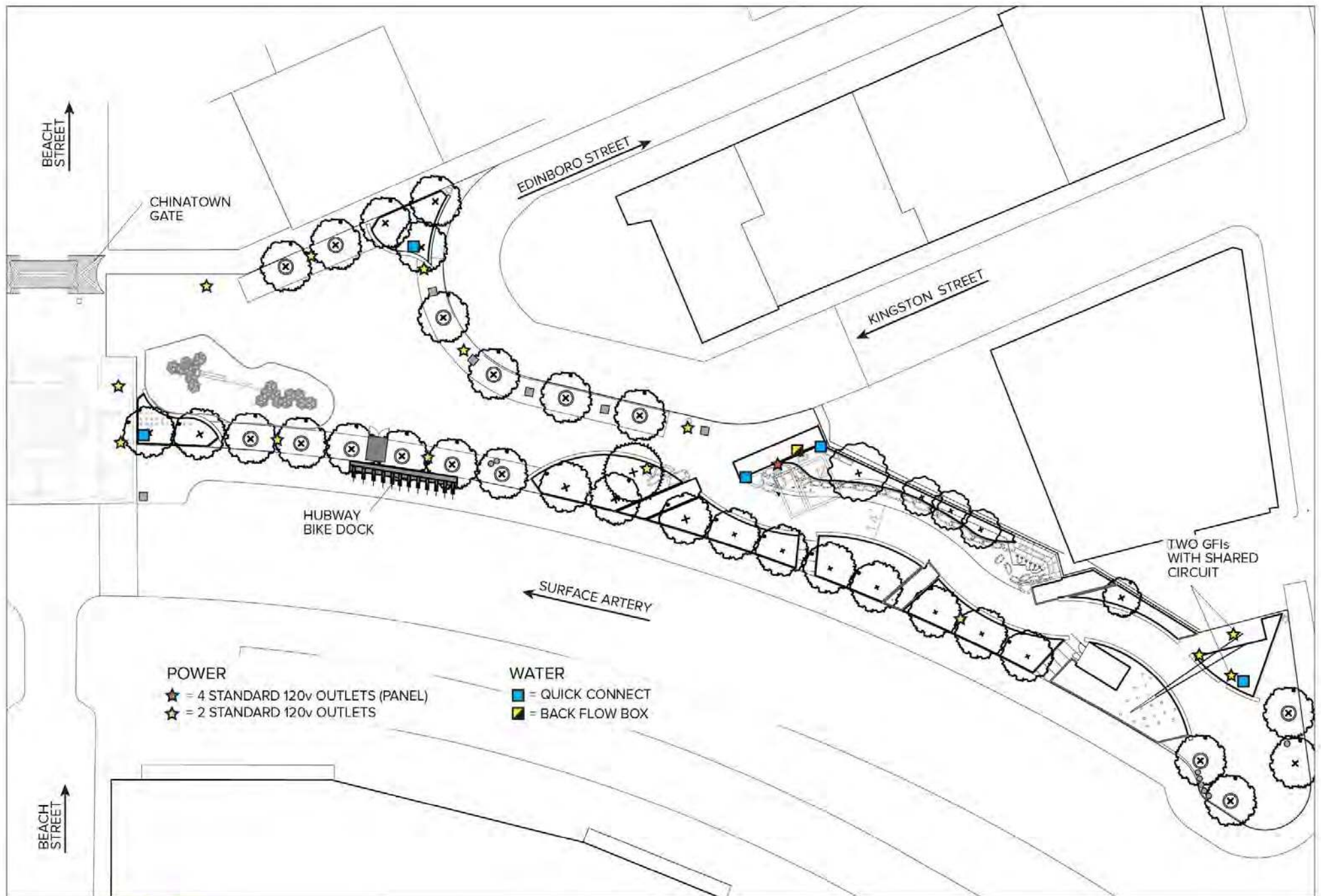
PARCEL:

PROJECT:

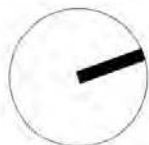
**1" = 20'**

***K (Mary Soo Hoo Park)***





**THE  
GREEN  
WAY**



DATE:

SCALE:

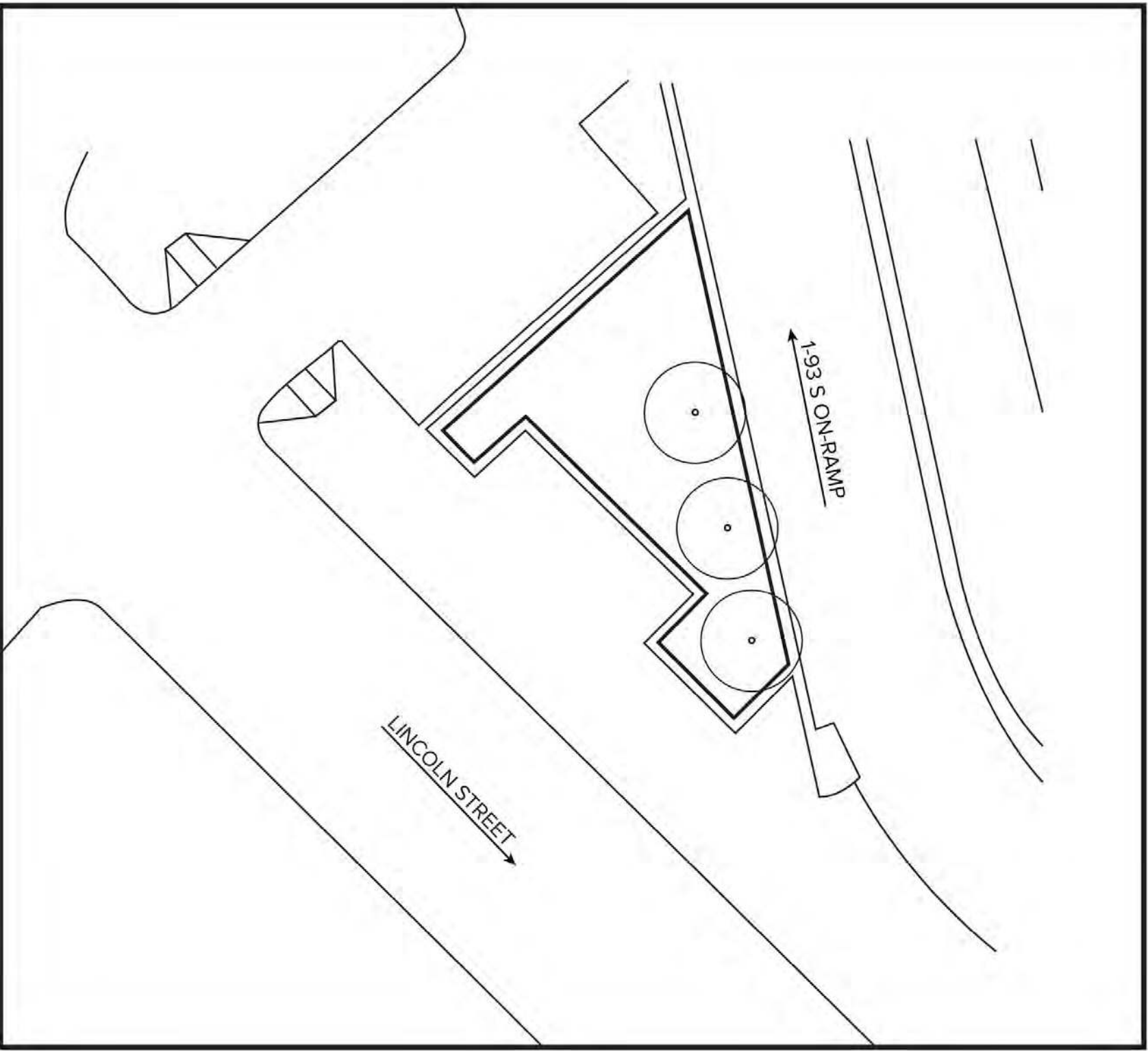
PARCEL:

PROJECT:

1" = 50'

Chin Park on the Rose Kennedy Greenway (23d)



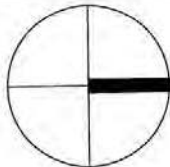
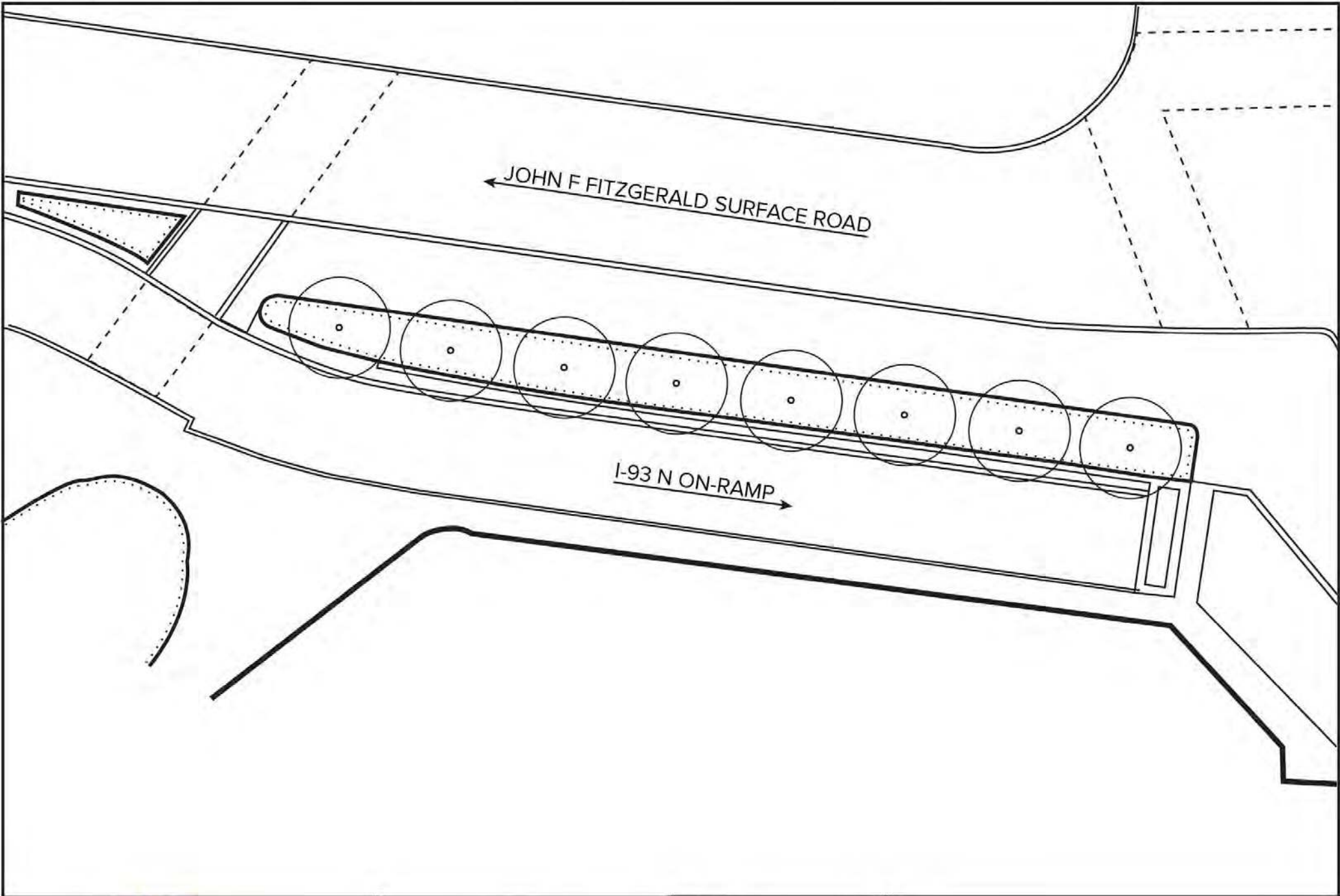


THE  
GREEN  
WAY



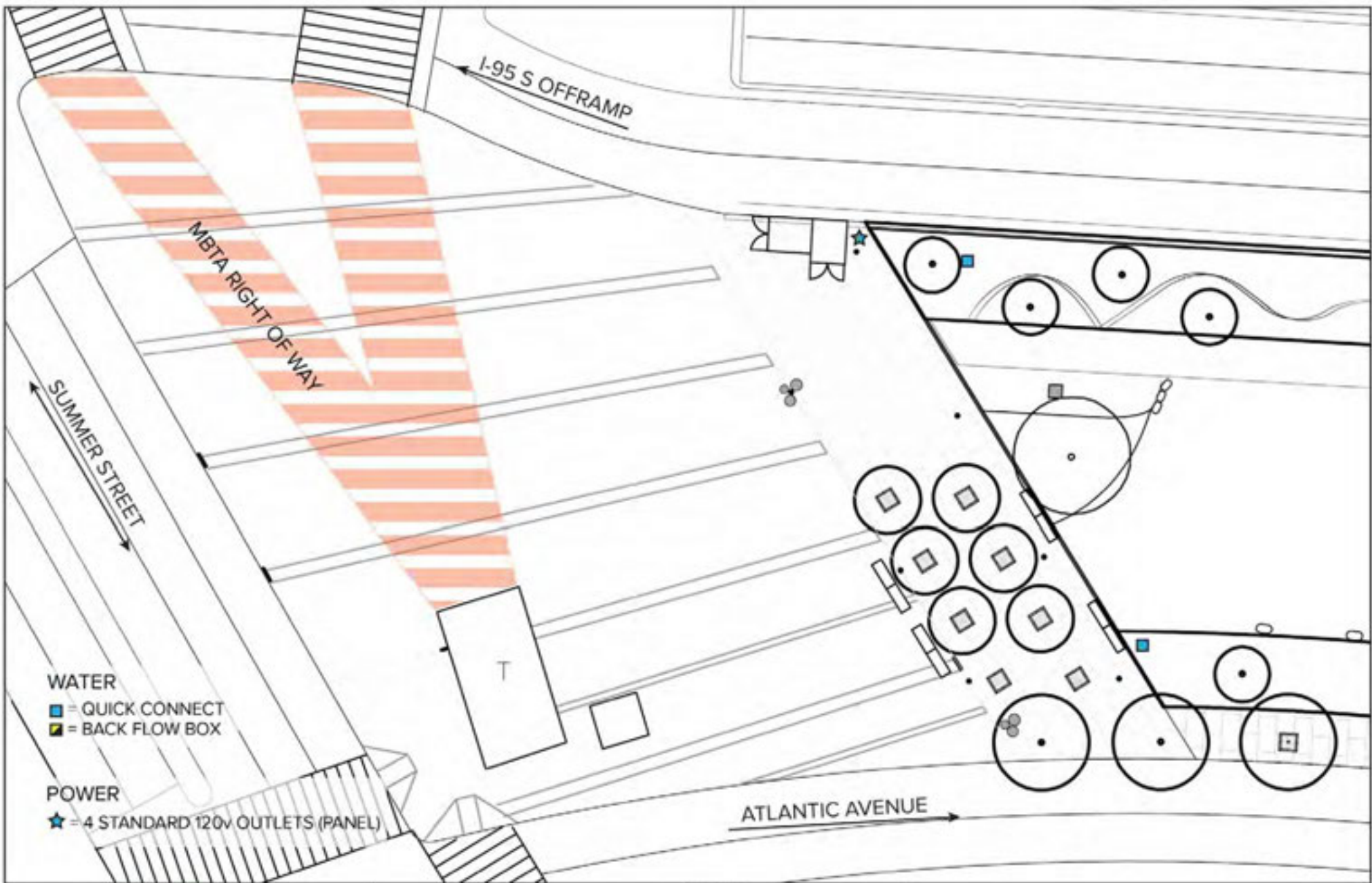
DATE:	
SCALE:	1" = 20'
PARCEL:	Parcel H (pH)
PROJECT	





DATE:	
SCALE:	1" = 40'
PARCEL:	Parcel G (pG)
PROJECT:	





**THE  
GREEN  
WAY**



DATE:

SCALE:

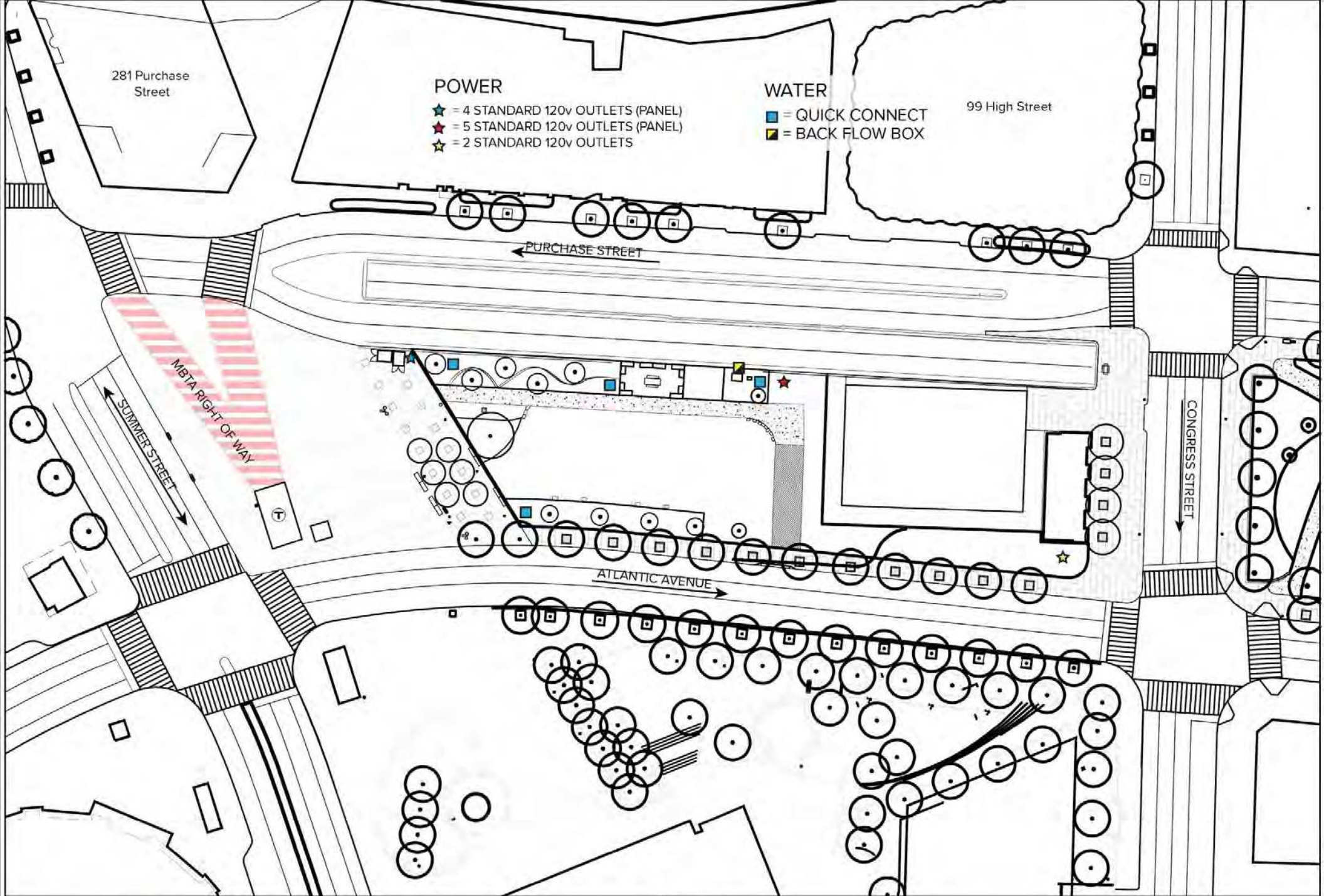
PARCEL:

PROJECT:

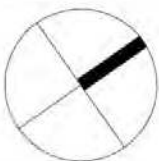
1" = 30'

Dewey Square Park Plaza (P22)





**THE  
GREEN  
WAY**

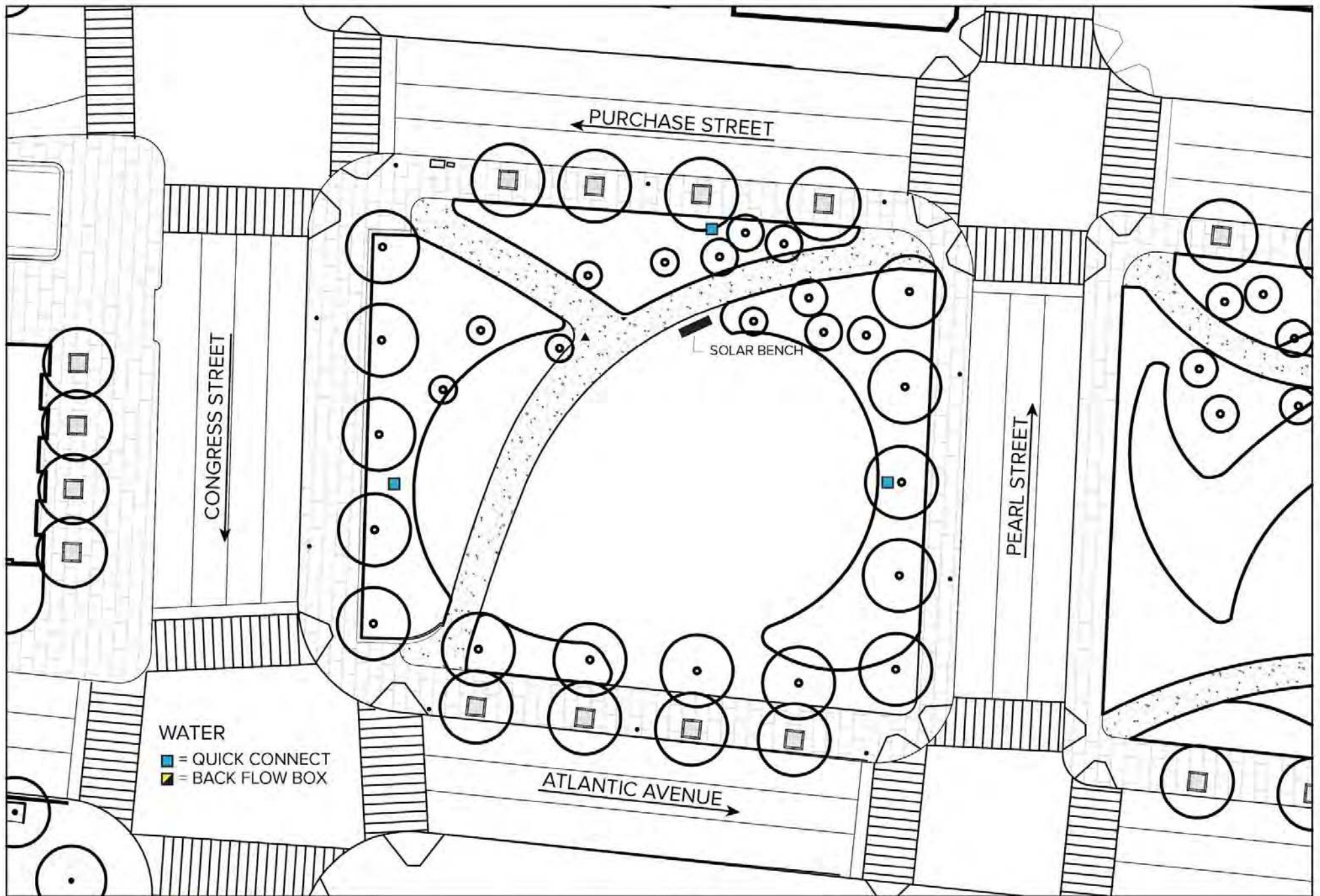


DATE:  
SCALE:  
PARCEL:  
PROJECT:

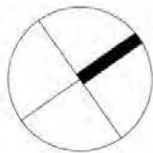
1" = 80'

Dewey Square Park (P22)





**THE  
GREEN  
WAY**



DATE:

SCALE:

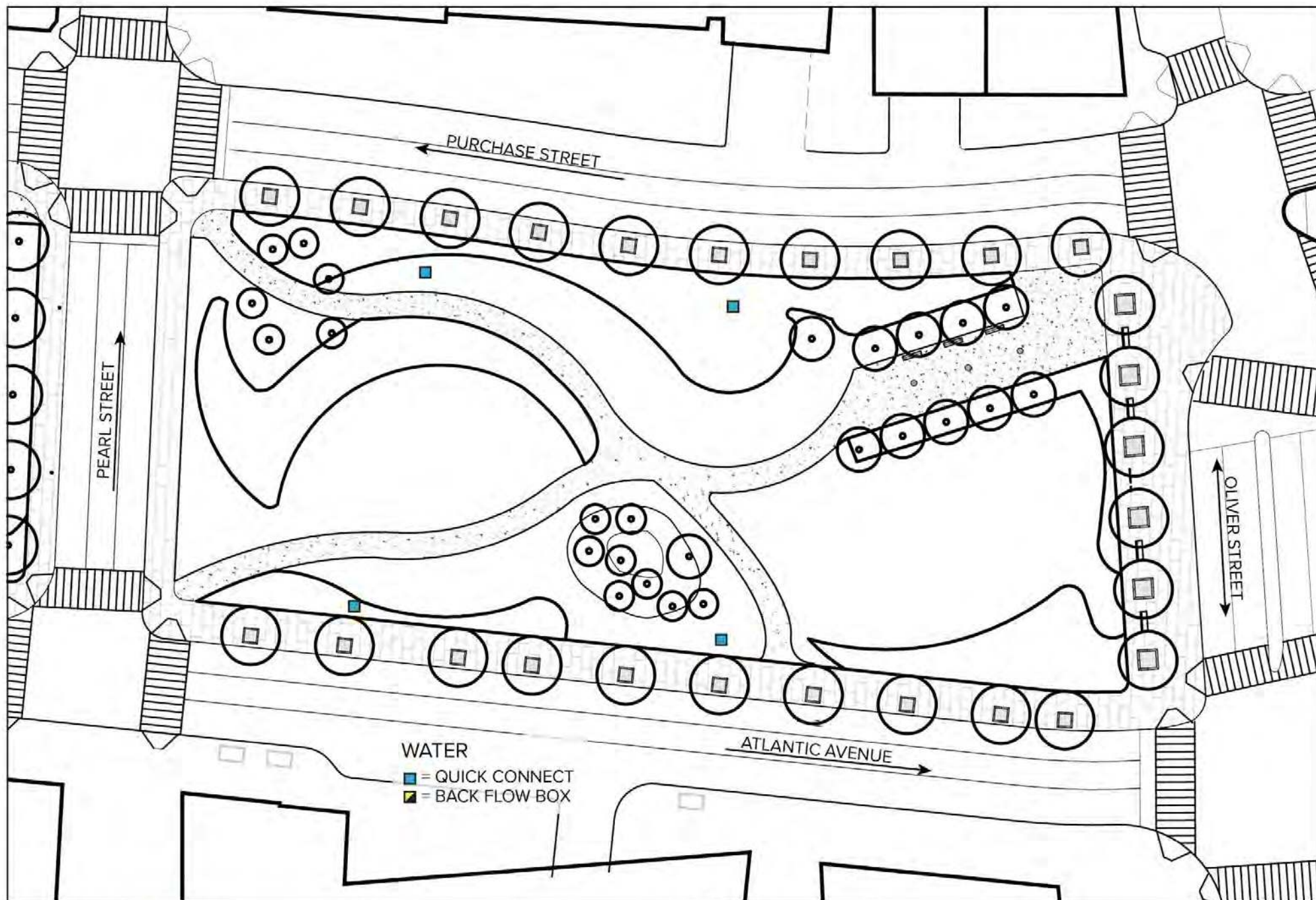
PARCEL:

PROJECT:

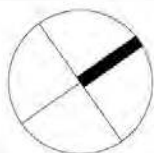
1" = 40'

Fort Point Channel Park (P21)





**THE  
GREEN  
WAY**

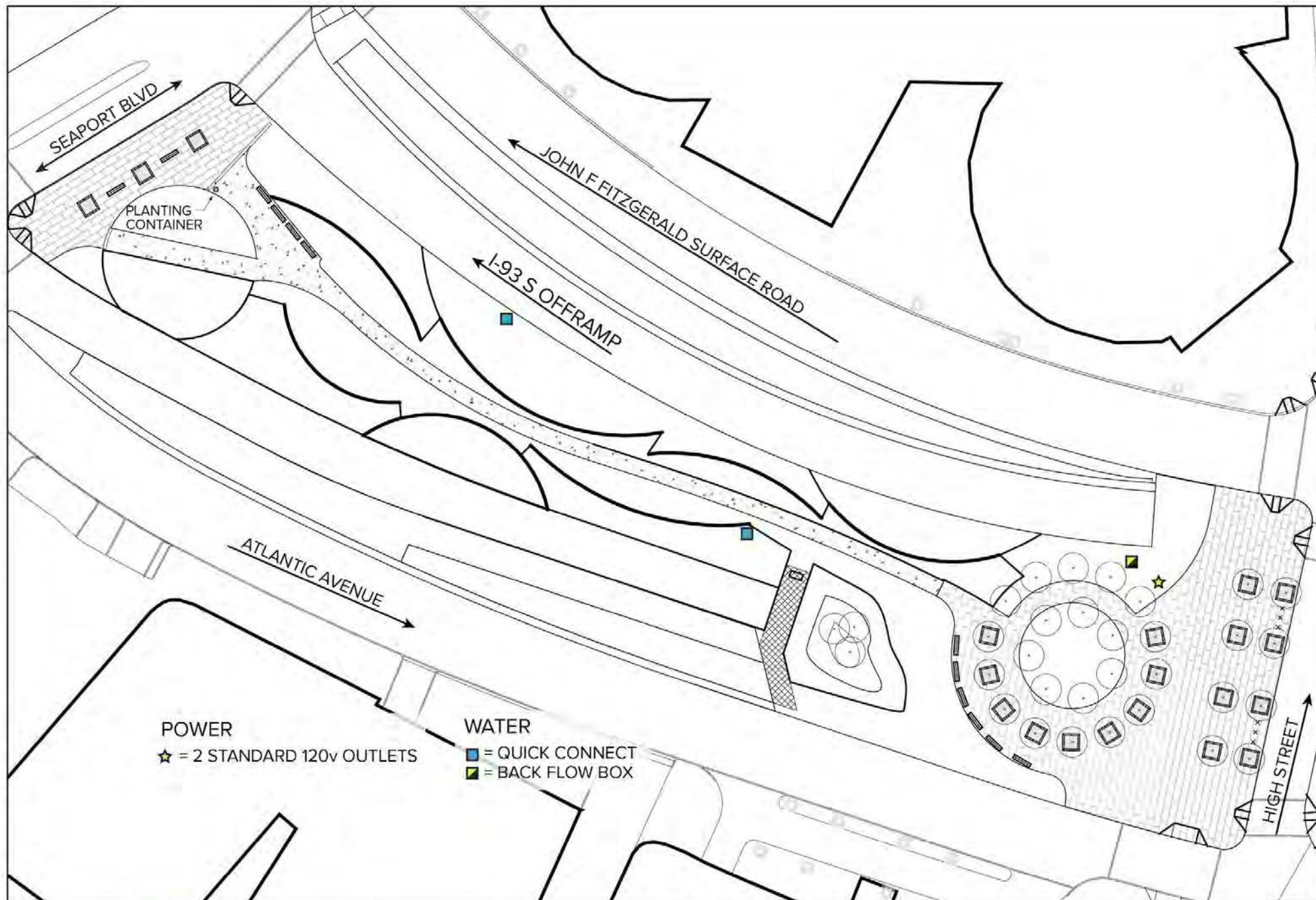


DATE:  
SCALE:  
PARCEL:  
PROJECT:

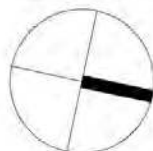
1"= 50'

Fort Point Channel Park (P19)



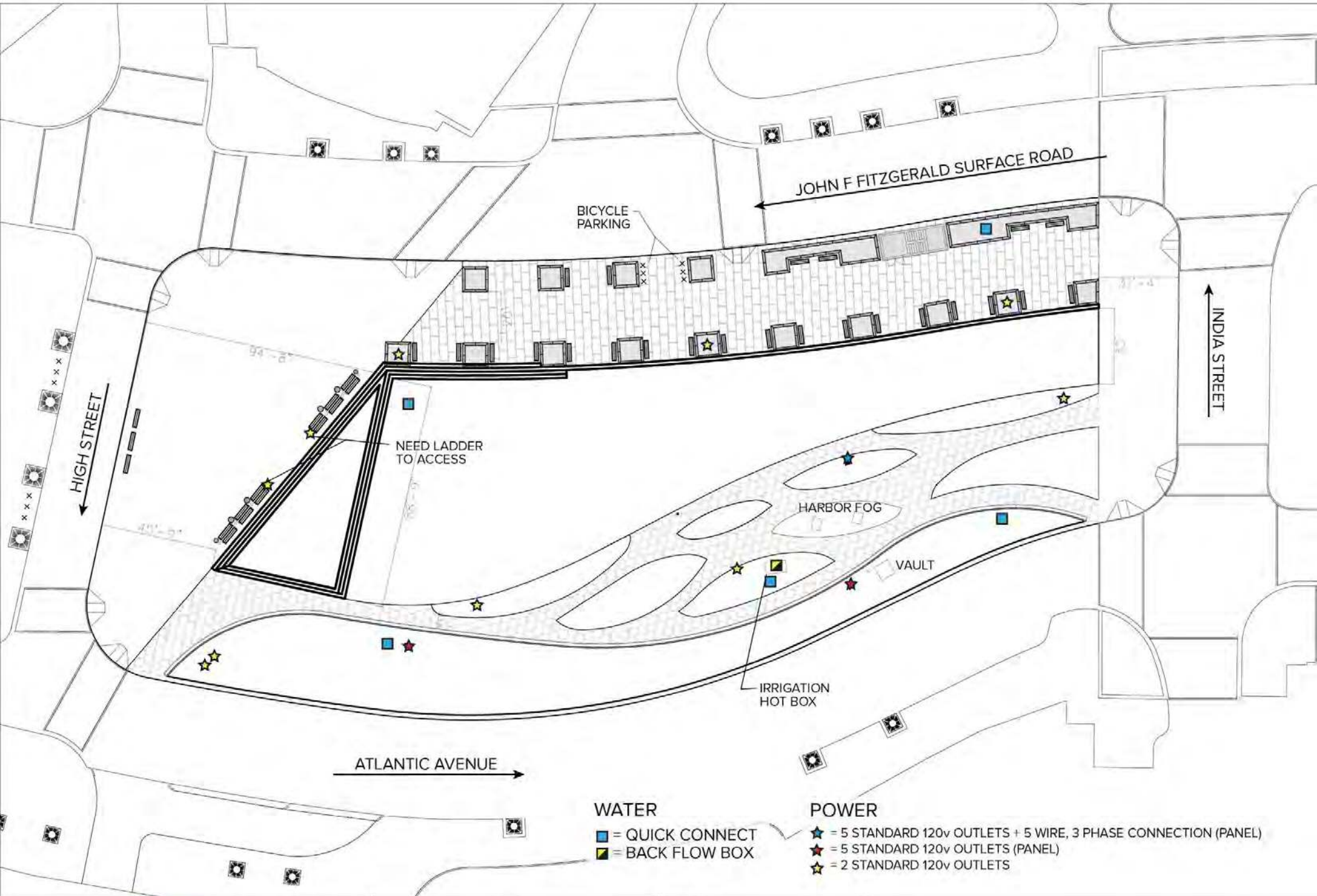


**THE  
GREEN  
WAY**



DATE:	
SCALE:	1" = 60'
PARCEL:	Urban Arboretum (P18)
PROJECT:	





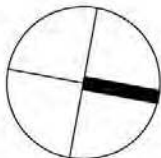
#### WATER

- = QUICK CONNECT
- = BACK FLOW BOX

#### POWER

- ★ = 5 STANDARD 120v OUTLETS + 5 WIRE, 3 PHASE CONNECTION (PANEL)
- ★ = 5 STANDARD 120v OUTLETS (PANEL)
- ★ = 2 STANDARD 120v OUTLETS

**THE  
GREEN  
WAY**



DATE:

SCALE:

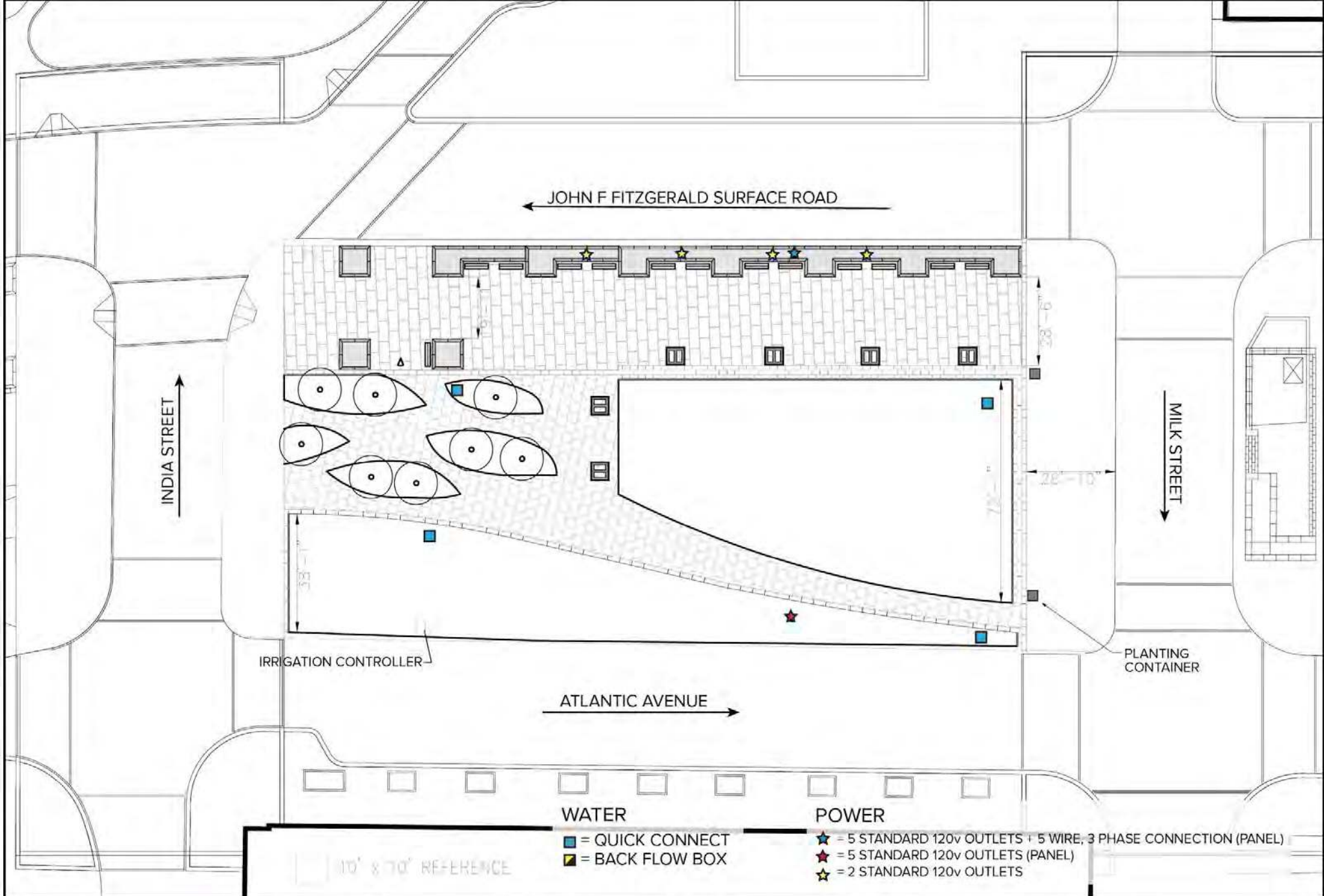
PARCEL:

PROJECT:

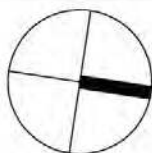
**1" = 50'**

**Wharf District Park (P17)**





**THE  
GREEN  
WAY**



DATE:

SCALE:

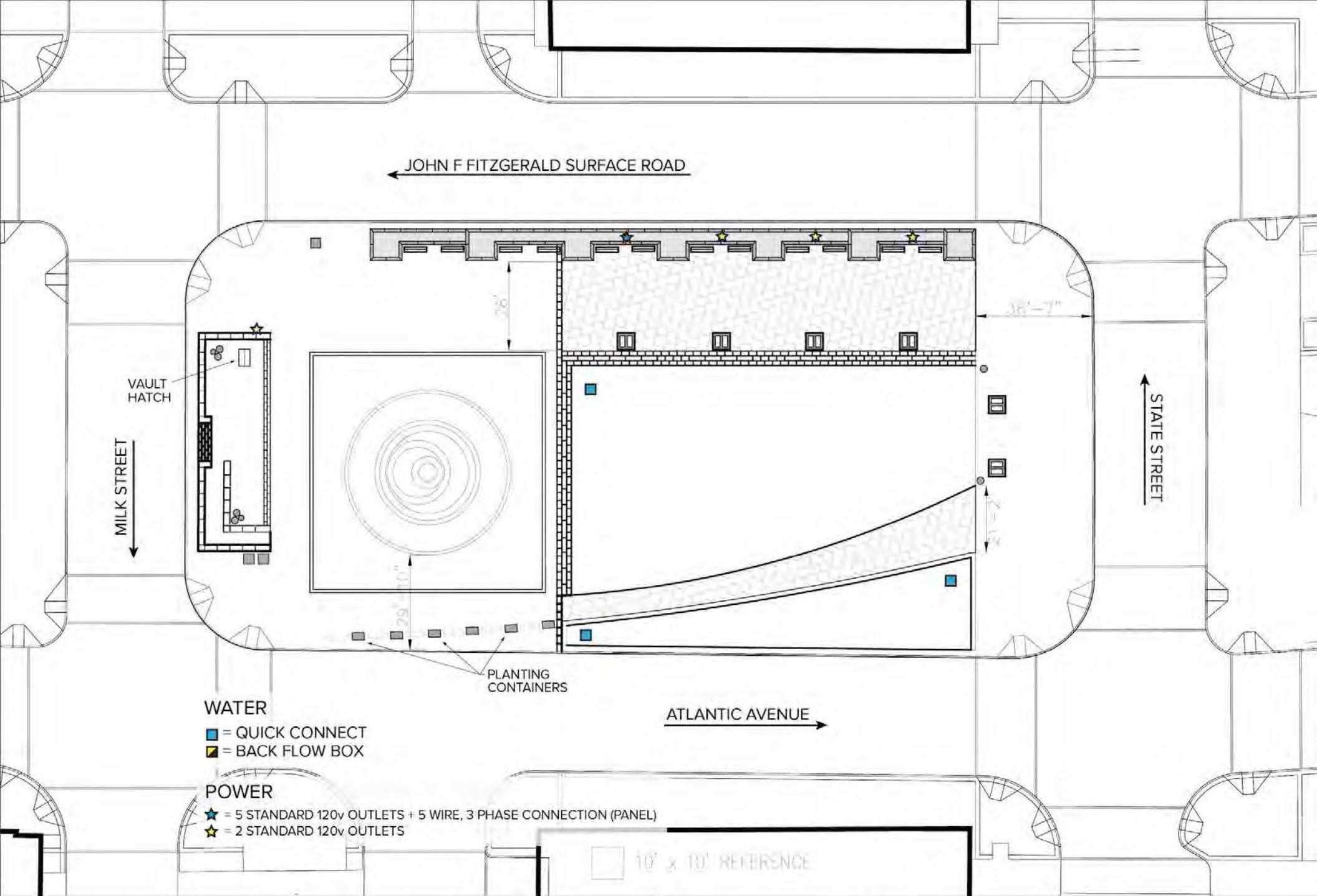
PARCEL:

PROJECT:

1" = 40'

Wharf District Park (P16)





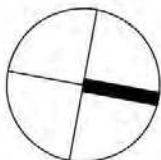
**WATER**

- = QUICK CONNECT
- = BACK FLOW BOX

**POWER**

- ★ = 5 STANDARD 120v OUTLETS + 5 WIRE, 3 PHASE CONNECTION (PANEL)
- ★ = 2 STANDARD 120v OUTLETS

□ 10' x 10' REFERENCE



DATE:	
SCALE:	1" = 40'
PARCEL:	Wharf District Park - Rings Fountain (P15)
PROJECT:	

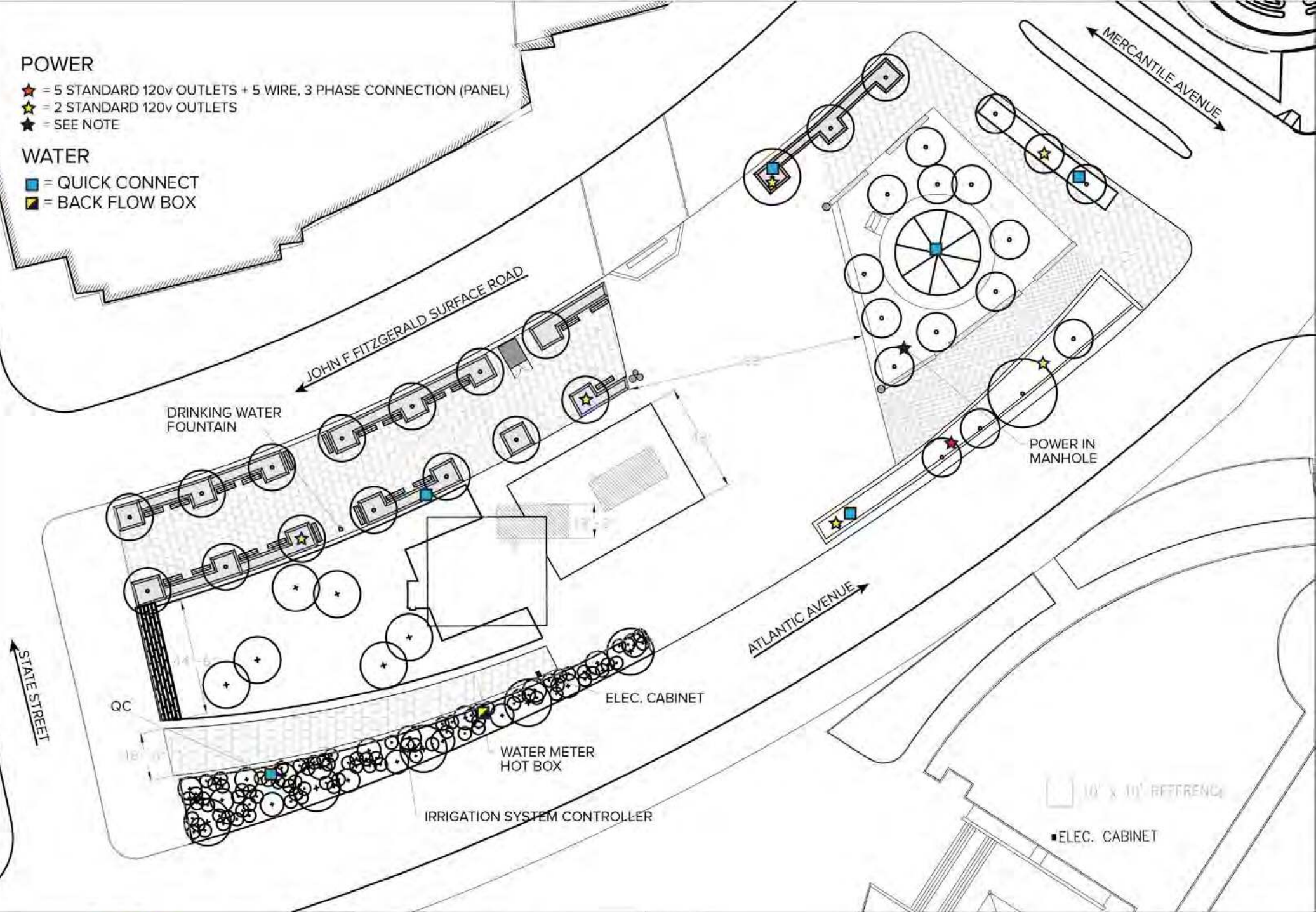


## POWER

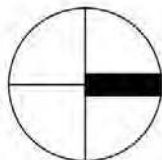
- ★ = 5 STANDARD 120v OUTLETS + 5 WIRE, 3 PHASE CONNECTION (PANEL)
- ☆ = 2 STANDARD 120v OUTLETS
- ★ = SEE NOTE

## WATER

- = QUICK CONNECT
- = BACK FLOW BOX



**THE  
GREEN  
WAY**

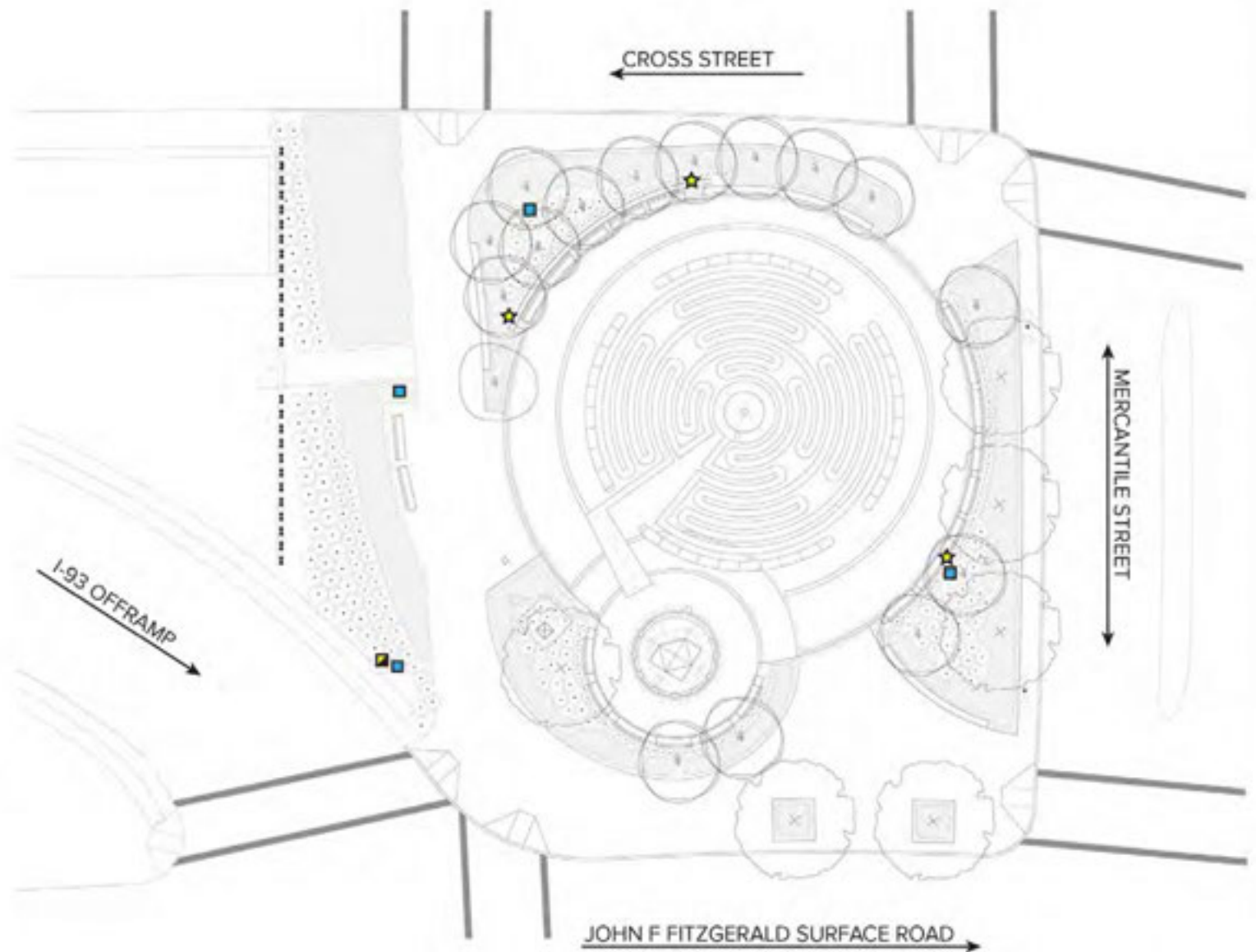


DATE  
SCALE:  
PARCEL:  
PROJECT:

1" = 50'

Wharf District Park - Greenway Carousel (P14)





**THE  
GREEN  
WAY**



DATE:

SCALE:

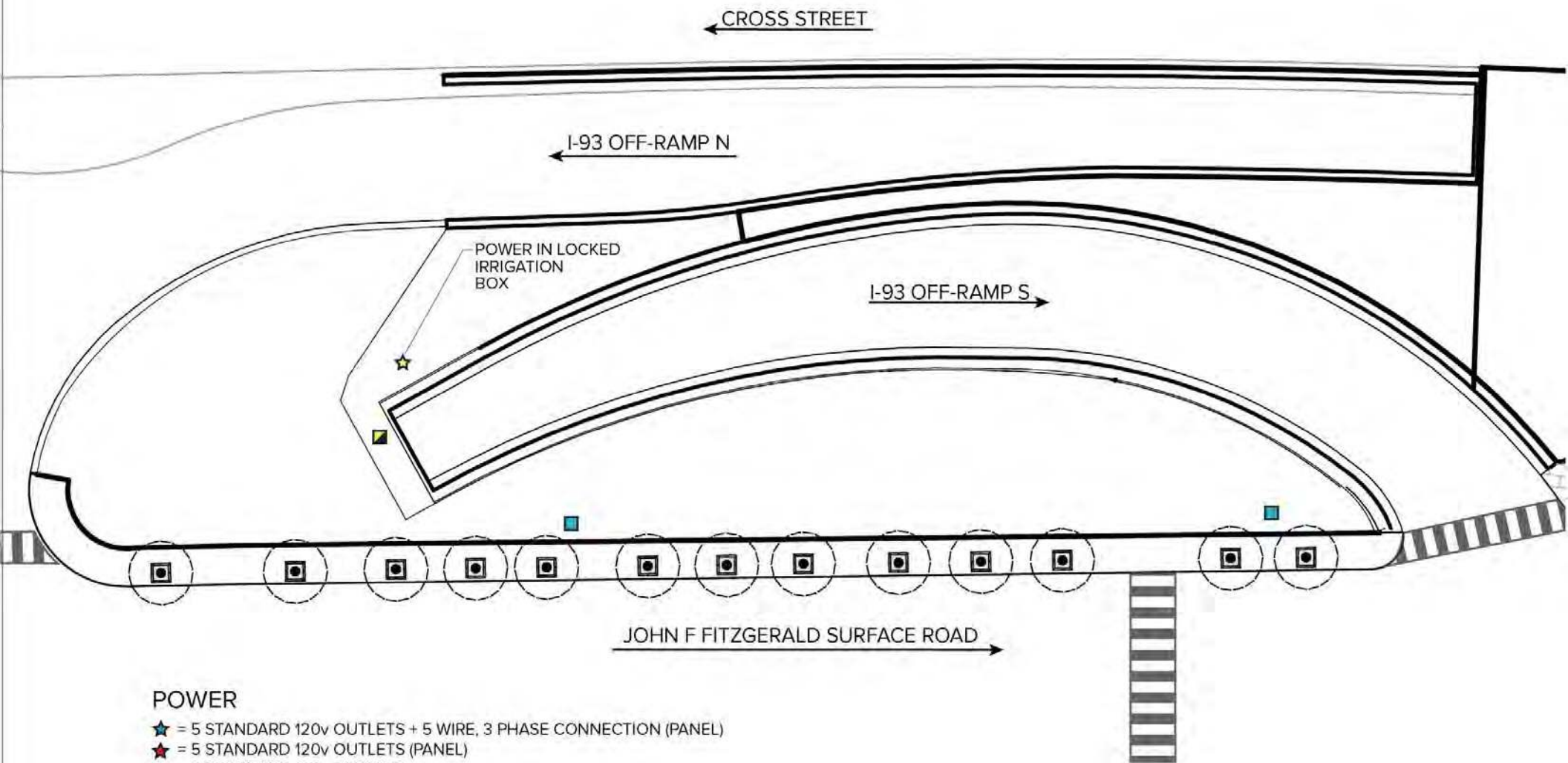
PARCEL:

PROJECT:

1" = 30'

*Armenian Heritage Park (P13)*





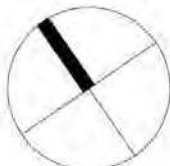
#### POWER

- ★ = 5 STANDARD 120v OUTLETS + 5 WIRE, 3 PHASE CONNECTION (PANEL)
- ★ = 5 STANDARD 120v OUTLETS (PANEL)
- ★ = 2 STANDARD 120v OUTLETS

#### WATER

- = QUICK CONNECT
- = BACK FLOW HOT BOX

**THE  
GREEN  
WAY**



DATE:

SCALE:

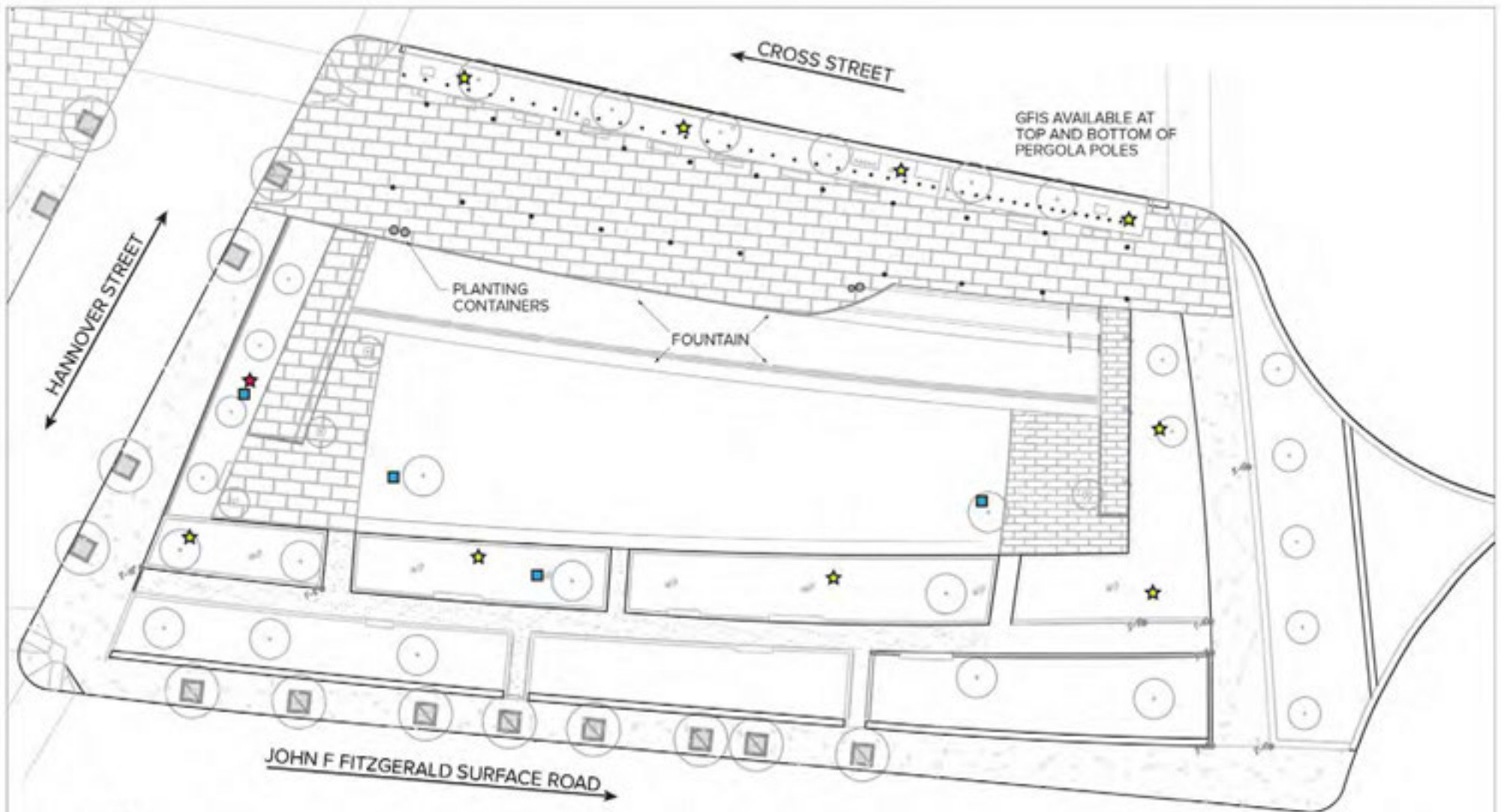
PARCEL:

PROJECT:

**1" = 50'**

**Parcel 12 (P12)**





#### WATER

- = QUICK CONNECT
- = BACK FLOW HOT BOX

#### POWER

- ★ = 5 STANDARD 120v OUTLETS (PANEL)
- ★ = 1 STANDARD 120v OUTLET

**THE  
GREEN  
WAY**



DATE:

SCALE:

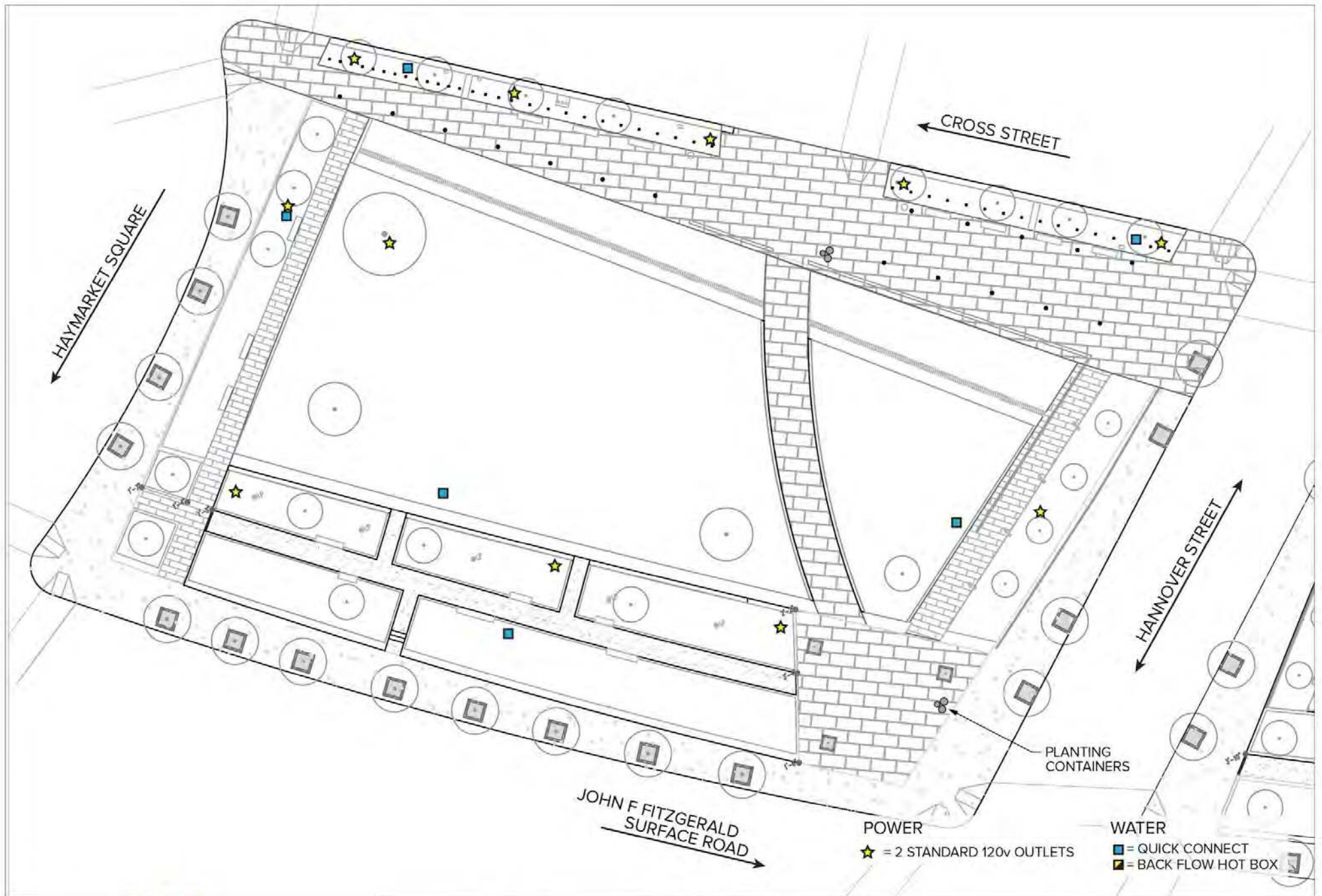
PARCEL:

PROJECT:

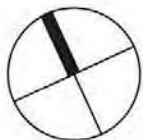
**1" = 40'**

**North End Park (P10)**





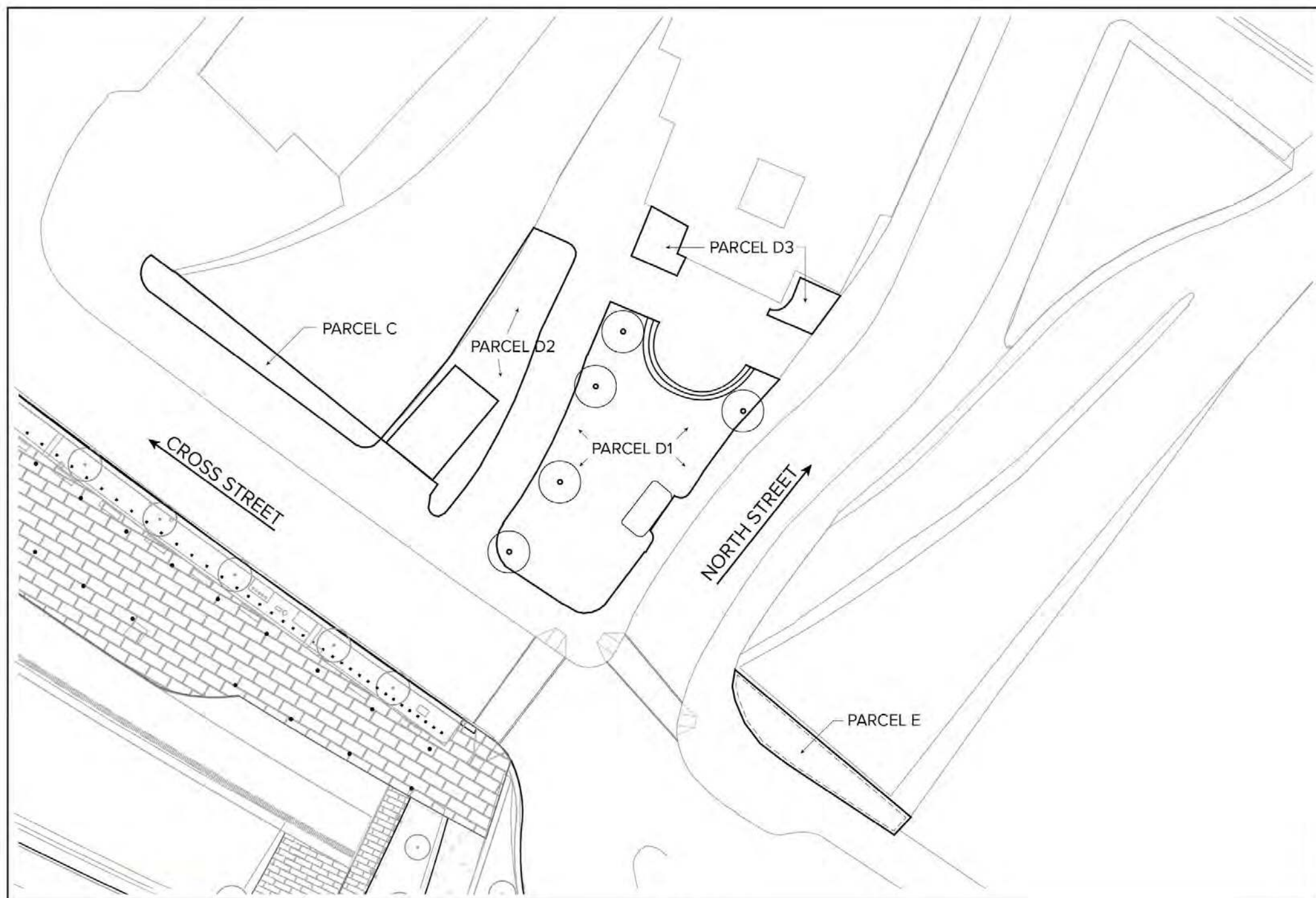
**THE  
GREEN  
WAY**



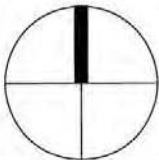
DATE:  
 SCALE:  
 PARCEL:  
 PROJECT:

**1" = 40'**  
**North End Park (P8)**





**THE  
GREEN  
WAY**



DATE:

SCALE:

PARCEL:

PROJECT:

**1" = 40'**

**Parcels C/D/E (pB, pC, pD1, pD2, pD3, pE)**





**Parcel Labeling**

**Greenway Parcels**